

13429.TIF

Street:

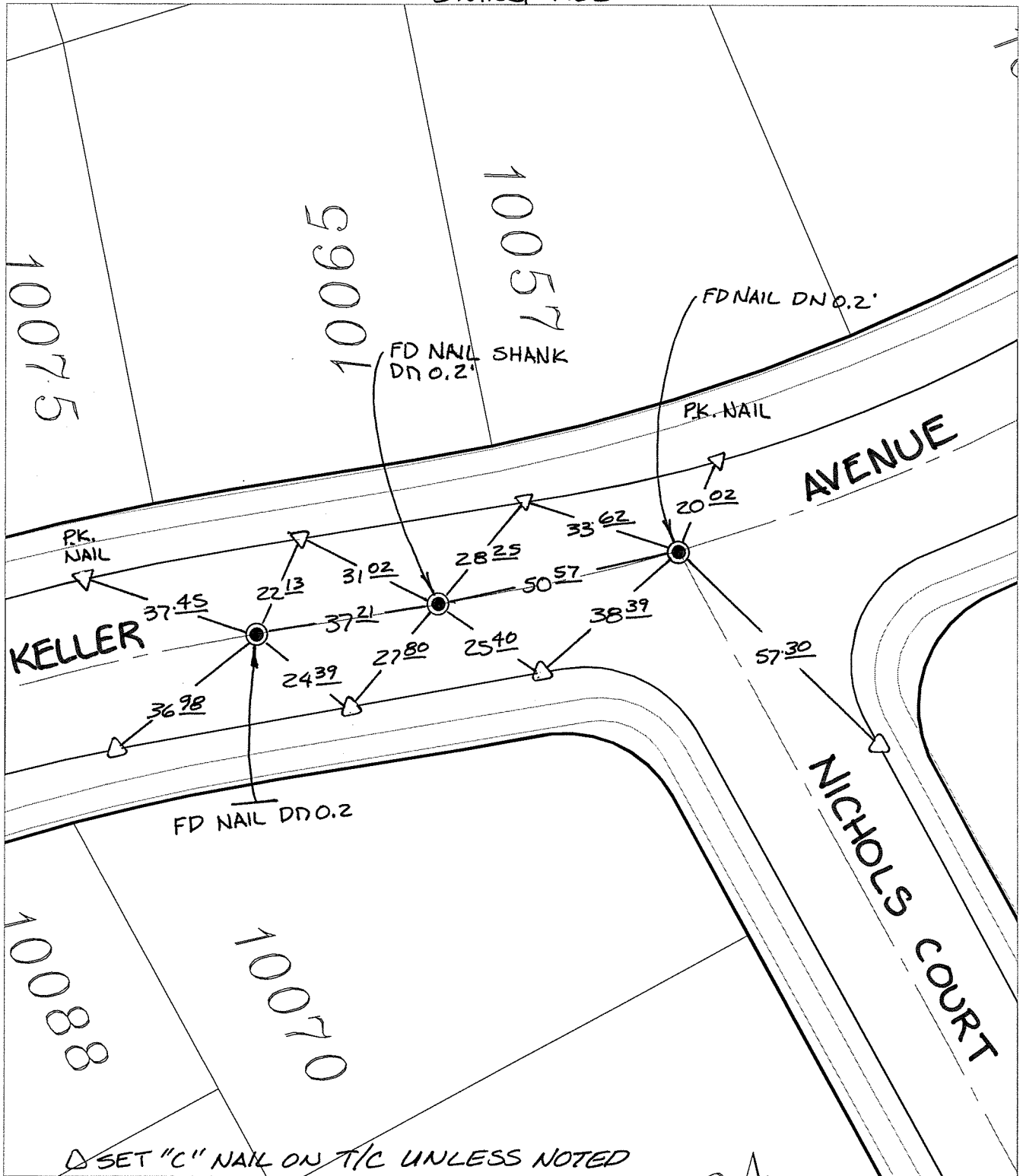
KELLER AVENUE

OFFICIAL USE ONLY

X-Street:

NICHOLS COURT

SWING TIES



- × FD. Ramset Nail on T/C    ● FD. LD. & TK. on T/C
- FD. "C" Nail on T/C    ○ Set LD. & TK. on T/C

P.K. and City Engineer tag to be set @ surface after street construction is complete. (If possible)

Scale: 1" = 30'  
 Date: 04/13/09  
 Drawn by: pw  
 F.B.:  
 TR-Sec: T3SR6W-2

## OFFICIAL TIE PLAT

### CITY OF RIVERSIDE

*These ties are for the purpose of perpetuating the found monumentation. No claim is made as to the relationship of the points or lines shown hereon to true boundary locations.*



Sheet 1 of 1  
 Cadme MB: 49-8