

13455.TIF

Street:

HARPER COURT

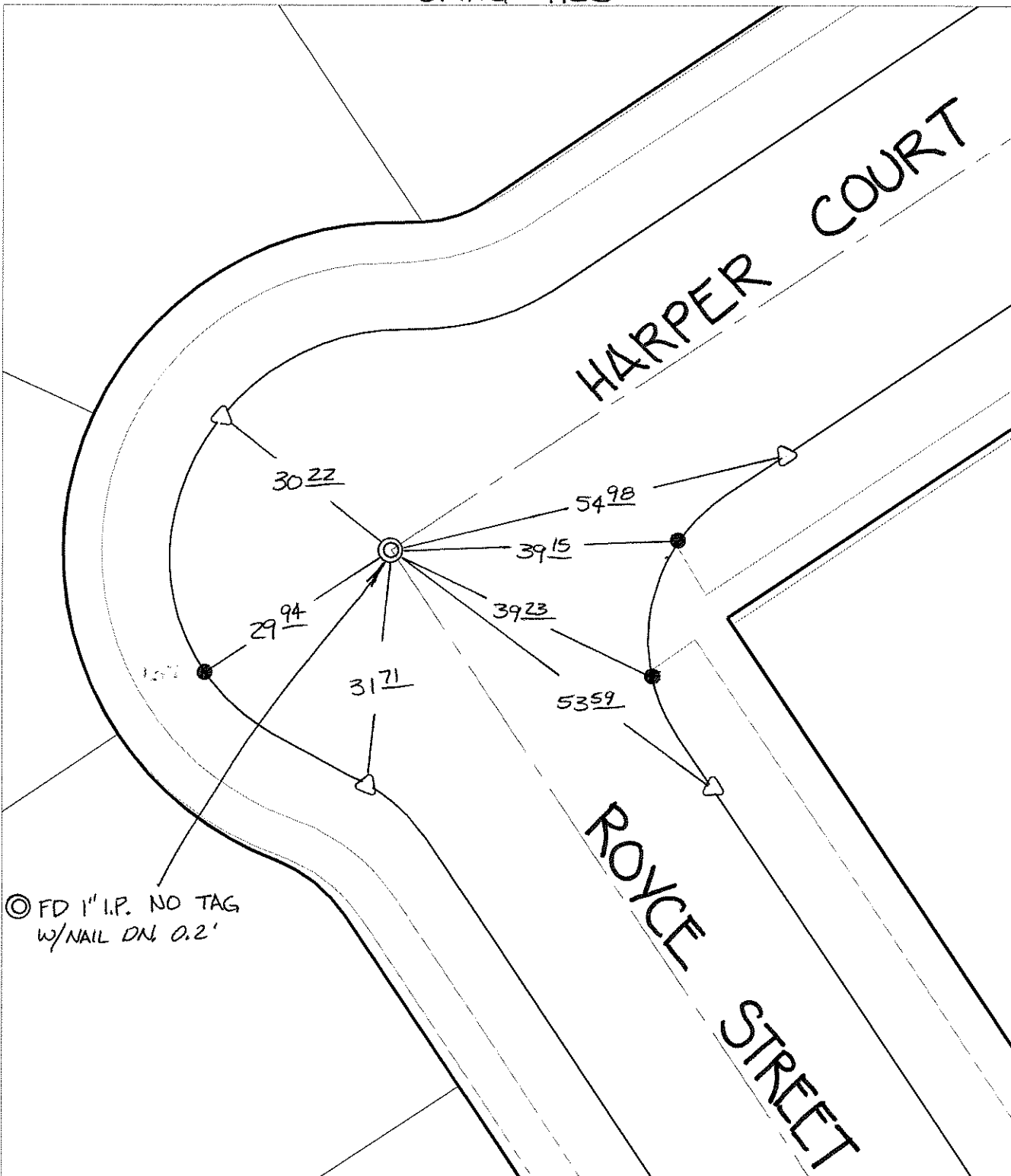
X-Street:  
OFFICIAL USE ONLY

ROYCE STREET

SWING TIES

HARPER COURT

ROYCE STREET



⊙ FD 1" I.P. NO TAG  
w/ NAIL ON 0.2'

- ✕ FD. Ramset Nail on T/C    ● FD. LD. & TK. on T/C    P.K. and City Engineer tag to be set @ surface after street construction is complete. (If possible)
- FD. "C" Nail on T/C    ○ Set LD. & TK. on T/C

Scale: 1" = 20'  
 Date: 10/01/09  
 Drawn by: pw  
 F.B.:  
 TR-Sec: T3SR5W-6

## OFFICIAL TIE PLAT

### CITY OF RIVERSIDE

*These ties are for the purpose of perpetuating the found monumentation. No claim is made as to the relationship of the points or lines shown hereon to true boundary locations.*



Sheet 1 of 1  
 Cadme MB: 66-2