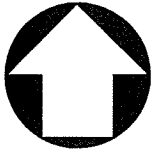


TR 21709-5

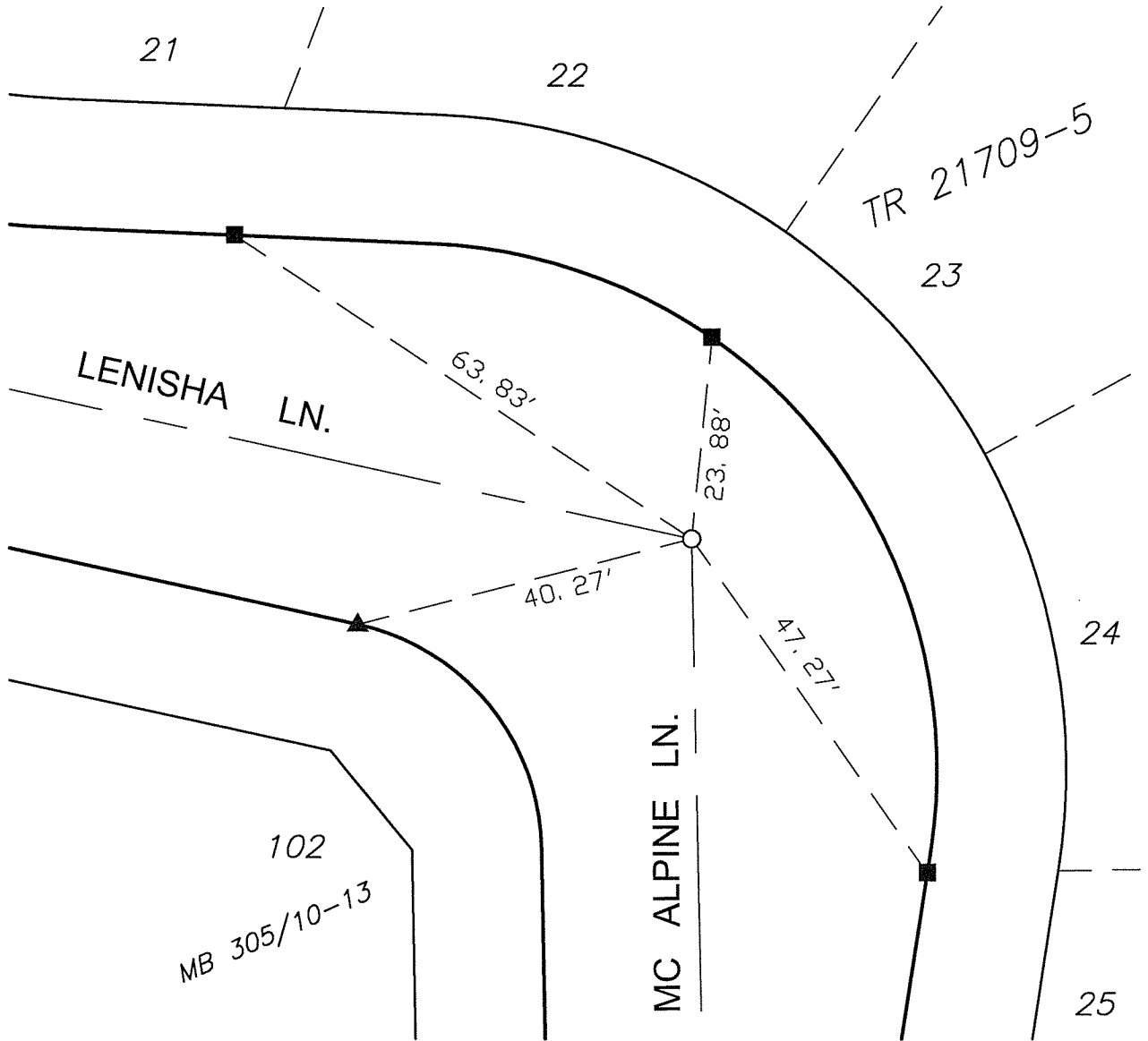
MB 305/10-13



STREET X-STREET MC ALPINE LN.

OFFICE USE ONLY

STREET LENISHA LN.



SURVEYORS' NOTE

- ▲ - INDICATES FOUND NAIL IN TC
- - INDICATES FOUND NAIL AND TAG IN TC STAMPED "RCE 17550"
- - INDICATES SET SPIKE AND WASHER FLUSH STAMPED "LS 5022"

SCALE: 1" = 20'

DATE: 05-12-10

DR. BY: S.M.S.

W.O.: 4RIC030200

--- OFFICIAL TIE PLAT ---
CITY OF RIVERSIDE

PREPARED BY:

PSOMAS

2010 Iowa Avenue #101 Riverside, California 92507
(951) 787-8421 www.psomas.com

SHEET

9

OF 13 SHEETS

13506.TIF