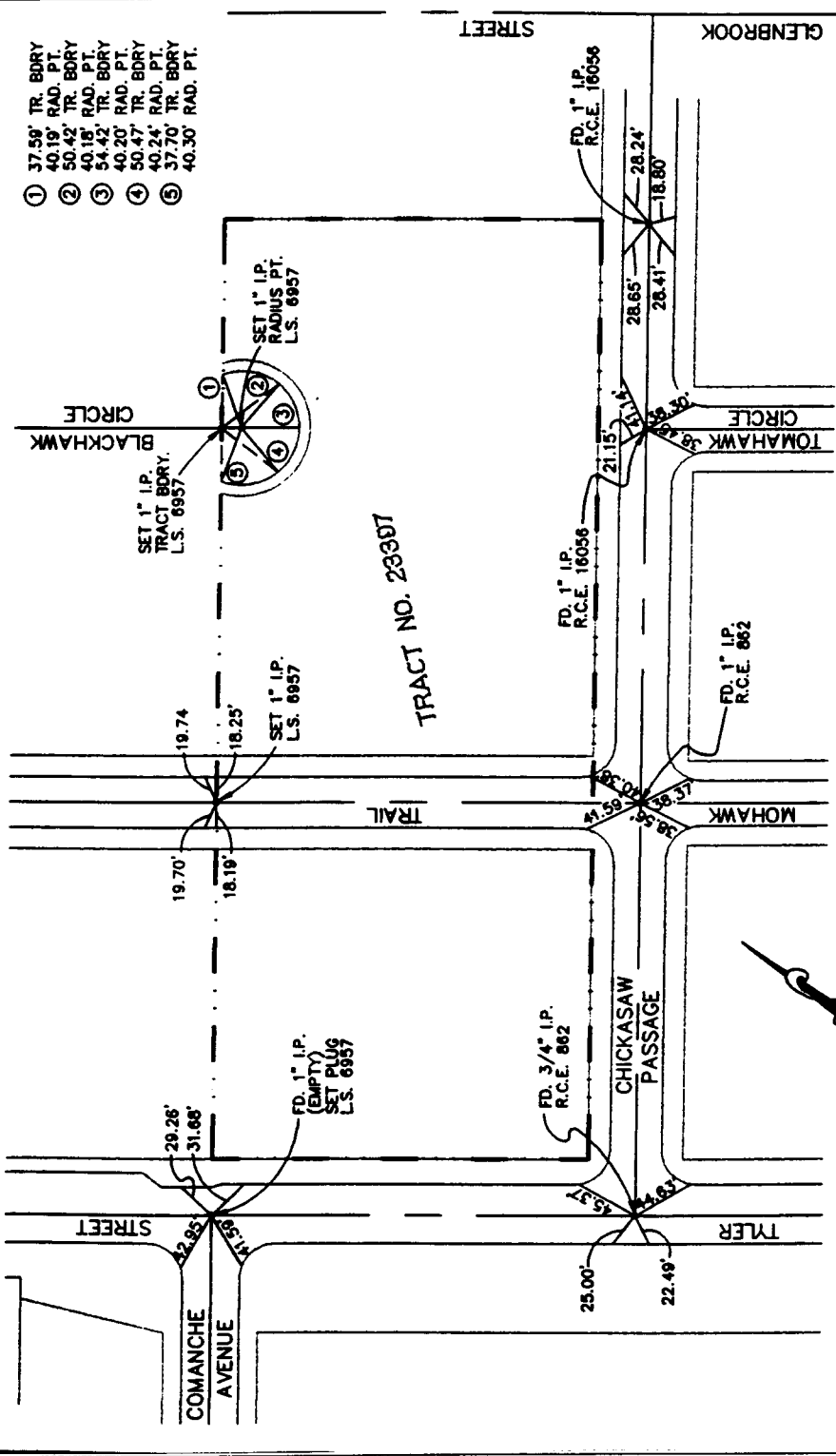


1352.TIF

**CHICKASAW PASS**  
**@ MOHAWK TRAIL**



**GROUSE/BEERS & ASSOCIATES, INC.**  
Civil Engineering x Surveying x Planning  
1700 HAMMER AVENUE, SUITE 104  
MORCO, CA 91760 (909) 736-2040 FAX (909) 736-5292

TRACT NO. 23397 - C.L. TIES

SCALE: 1" = 100'

NOTE:  
ALL TIE POINTS ARE RAMSET NAILS IN T.C.

- ✕ FD. Ramset Nail on T/C
- FD. LD. & TK. on T/C
- FD. "C" Nail on T/C
- Set LD. & TK. on T/C

Scale:  
Date:  
Drawn by:  
W.O.:  
F.B.:

**OFFICIAL TIE PLAT**  
**CITY OF RIVERSIDE**

*These ties are for the purpose of perpetuating the found monumentation. No claim is made as to the relationship of the points or lines shown hereon to true boundary locations.*

Sheet 1 of 1  
File No.:

Street: **CHICKASAW PASSAGE**

X-Street: **MOHAWK TRAIL**

OFFICIAL USE ONLY