

GRW&Son, INC.

13521.T1/F

STREET: WASHINGTON STREET

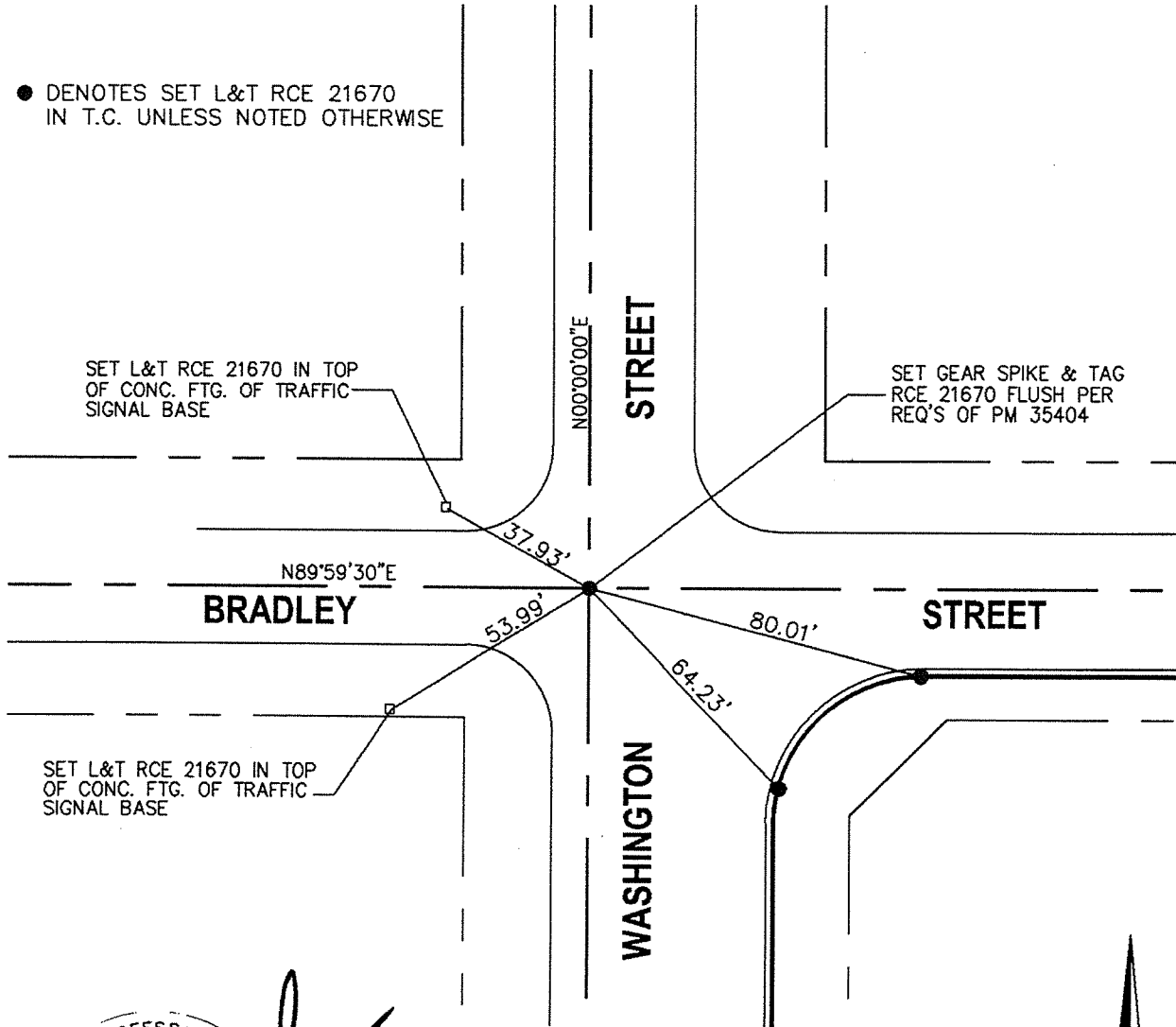
X-STREET: BRADLEY STREET

FOR OFFICIAL USE ONLY

● DENOTES SET L&T RCE 21670 IN T.C. UNLESS NOTED OTHERWISE

SET L&T RCE 21670 IN TOP OF CONC. FTG. OF TRAFFIC SIGNAL BASE

SET GEAR SPIKE & TAG RCE 21670 FLUSH PER REQ'S OF PM 35404



SET L&T RCE 21670 IN TOP OF CONC. FTG. OF TRAFFIC SIGNAL BASE

REGISTERED PROFESSIONAL ENGINEER  
 GARY R. WALKER  
 No. 21670  
 Exp. 9-30-11  
 CIVIL  
 STATE OF CALIFORNIA



P.M. 35404

SCALE:	1" = $\frac{40'}{20}$
DATE:	5/21/10
DRAWN BY:	RAW
F.B.	
SEC:	14 T.3S., R.5W

## OFFICIAL TIE PLAT

### CITY OF RIVERSIDE

THESE TIES ARE FOR THE PURPOSE OF PERPETUATING THE FOUND MONUMENTATION. NO CLAIM IS MADE AS TO THE RELATIONSHIP OF THE POINTS OR LINES SHOWN TO TRUE BOUNDARY LOCATIONS.

SHEET 1  
OF  
**1**