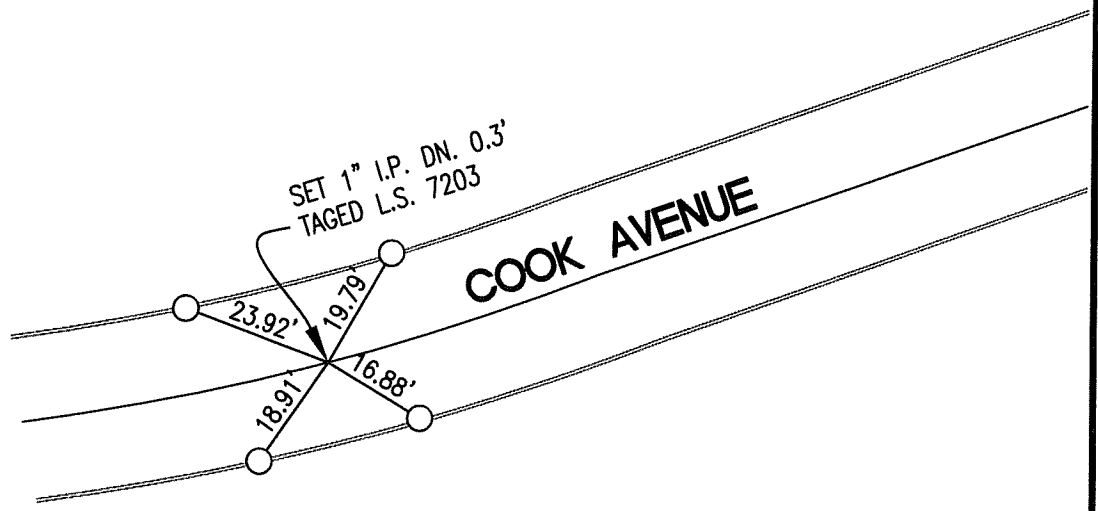


13566.11F

STREET: COOK AVE

X-STREET: EC N. OF BOLTON AVE  
OFFICIAL USE ONLY




○ = SET LD. & TK. on T/C

● = FD. LD., TK. & TAG ON T/C

SCALE: 1"=30  
 Date: 6/2008  
 Drawn by: MIKE  
 F.B.:  
 TR-Sec: -

**OFFICIAL TIE PLAT**  
**CITY OF RIVERSIDE**

These ties are for the purpose of perpetuating the found monumentation. No claim is made as to the relationship of the points or lines shown hereon to the true boundary locations.



SHEET 4 of 4  
 Cadme MB: