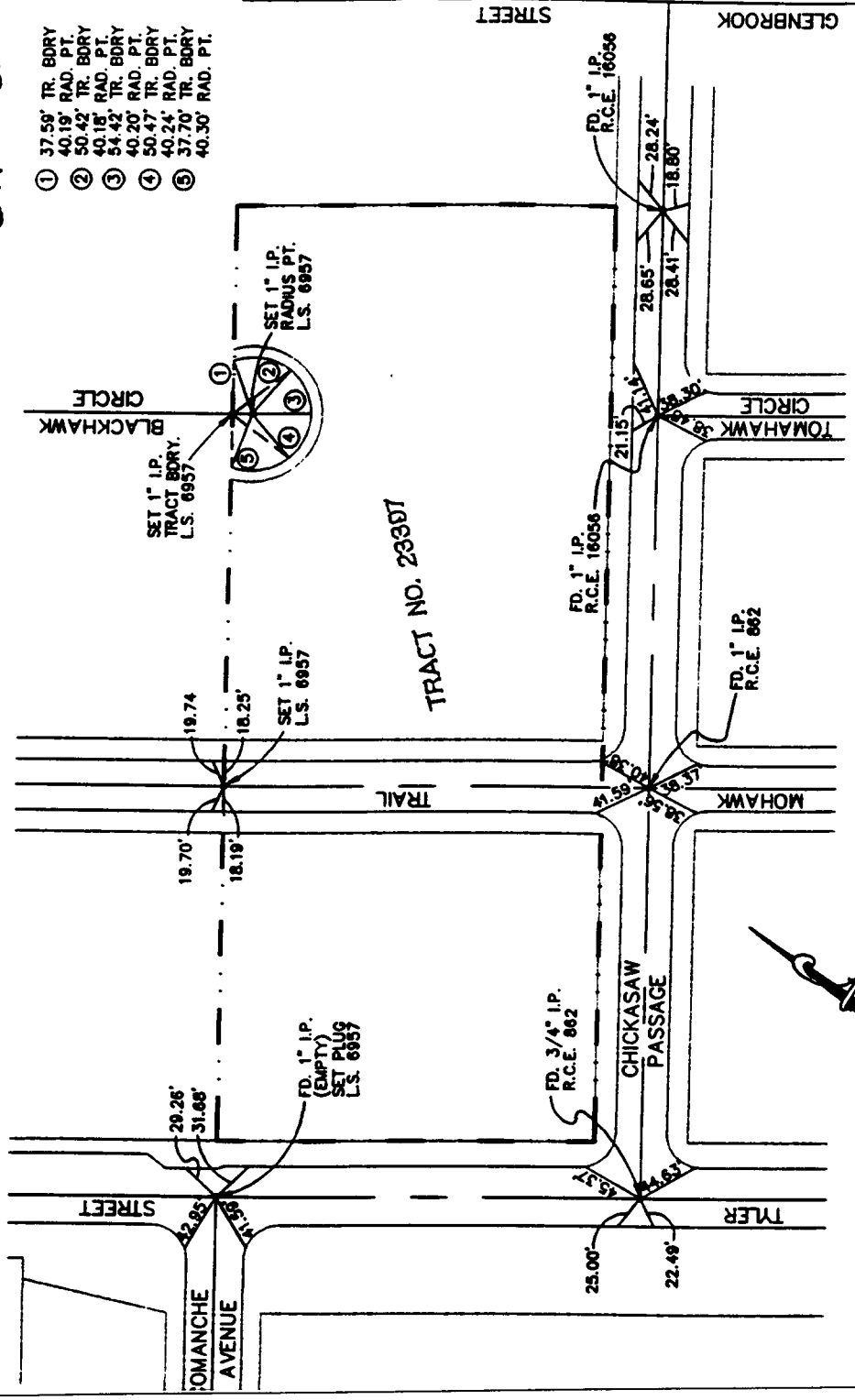


1353.716

TYLER ST

- ① 37.59' TR. BORY
- ② 40.19' RAD. PT.
- ③ 50.42' TR. BORY
- ④ 40.18' RAD. PT.
- ⑤ 54.42' TR. BORY
- ⑥ 40.20' RAD. PT.
- ⑦ 50.47' TR. BORY
- ⑧ 40.24' RAD. PT.
- ⑨ 37.70' TR. BORY
- ⑩ 40.30' RAD. PT.



- ✕ FD. Ramset Nail on T/C
- FD. LD. & TK. on T/C
- FD. "C" Nail on T/C
- Set LD. & TK. on T/C

CROUSE/BEERS & ASSOCIATES, INC.
 Civil Engineering x Surveying x Planning
 1700 HAMNER AVENUE, SUITE 104
 NORCO, CA 91760 (909) 736-2040 FAX (909) 736-5292

TRACT NO. 23397 - C.L. TIES

SCALE: 1" = 100'

TE: - TIE POINTS ARE RAMSET NAILS IN T.C.

Street: **CHICKASAW PASSAGE** X-Street: **TOMAHAWK CIRCLE**
 OFFICIAL USE ONLY

Scale:
 Date:
 Drawn by:
 W.O.:
 F.B.:

OFFICIAL TIE PLAT
CITY OF RIVERSIDE

These ties are for the purpose of perpetuating the found monumentation. No claim is made as to the relationship of the points or lines shown hereon to true boundary locations.

Sheet 1 of 1
 File No.: