

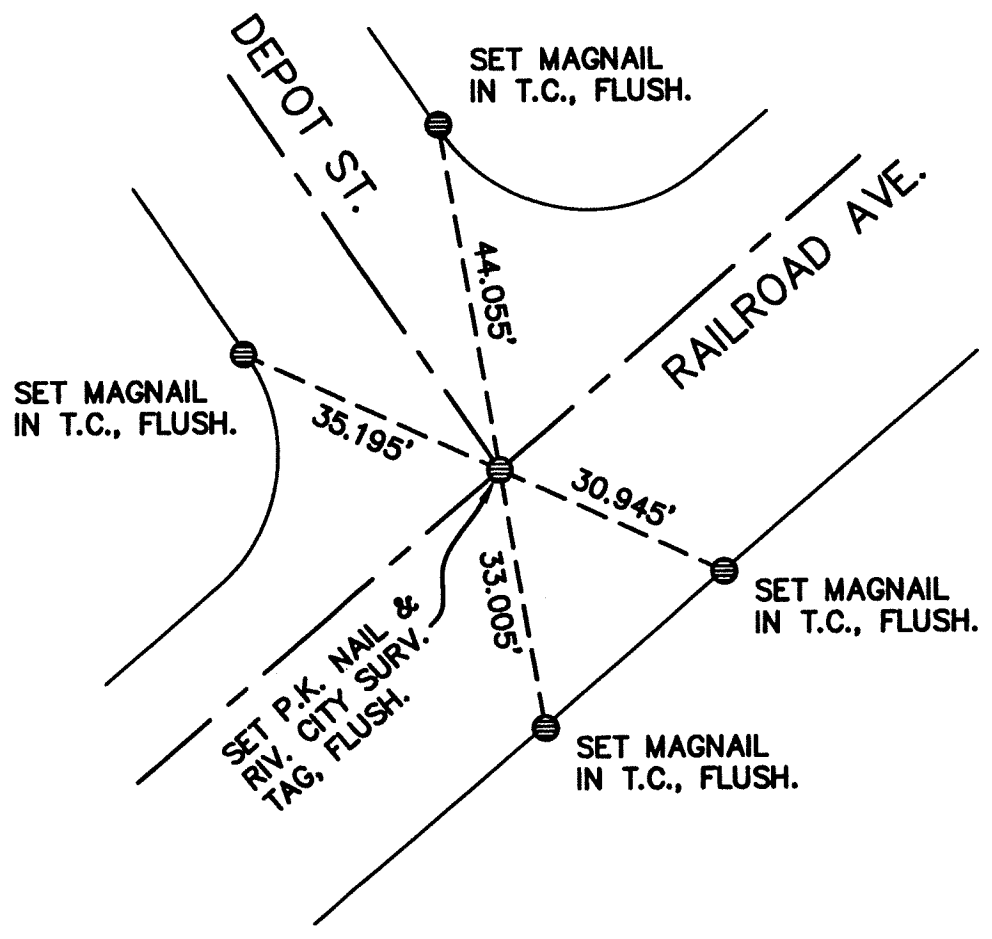
13536.T1F

Street: RAILROAD AVE

OFFICIAL USE ONLY

X-Street: DEPOT ST.

TRANSIT TIES



- × FD. Ramset Nail on T/C
- FD. "C" Nail on T/C

- FD. LD. & TK. on T/C
- Set LD. & TK. on T/C

Scale: NTS

Date:

Drawn by:

W.O.:

F.B.:

OFFICIAL TIE PLAT CITY OF RIVERSIDE

These ties are for the purpose of perpetuating the found monumentation. No claim is made as to the relationship of the points or lines shown hereon to true boundary locations.

Sheet 1 of 1

File No.: