

Street: CHICKASAW PASSAGE

X-Street: TYLER ST
OFFICIAL USE ONLY

1357.715

CROUSE/BEERS & ASSOCIATES, INC.

Civil Engineering x Surveying x Planning

1700 HAMMER AVENUE, SUITE 104

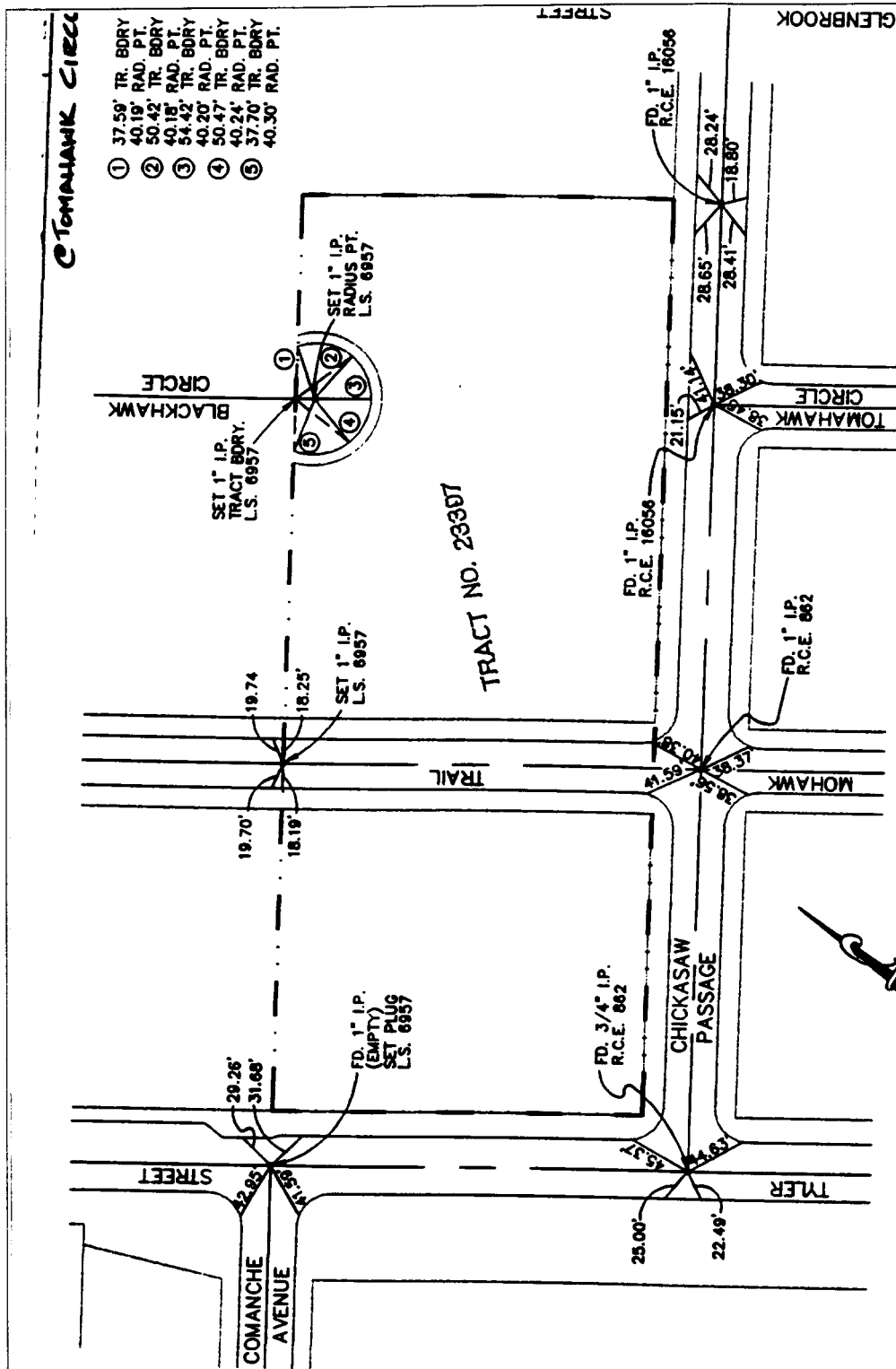
MORCO, CA 91760 (909) 736-2040 FAX (909) 736-5292

TRACT NO. 23397 - C.L. TIES

SCALE: 1" = 100'

NOTE:

ALL TIE POINTS ARE RAMSET NAILS IN T.C.



OFFICIAL TIE PLAT

CITY OF RIVERSIDE

These ties are for the purpose of perpetuating the found monumentation. No claim is made as to the relationship of the points or lines shown hereon to true boundary locations.

Sheet 1 of 1

File No.:

Scale:

Date:

Drawn by:

W.O.:

F.B.: