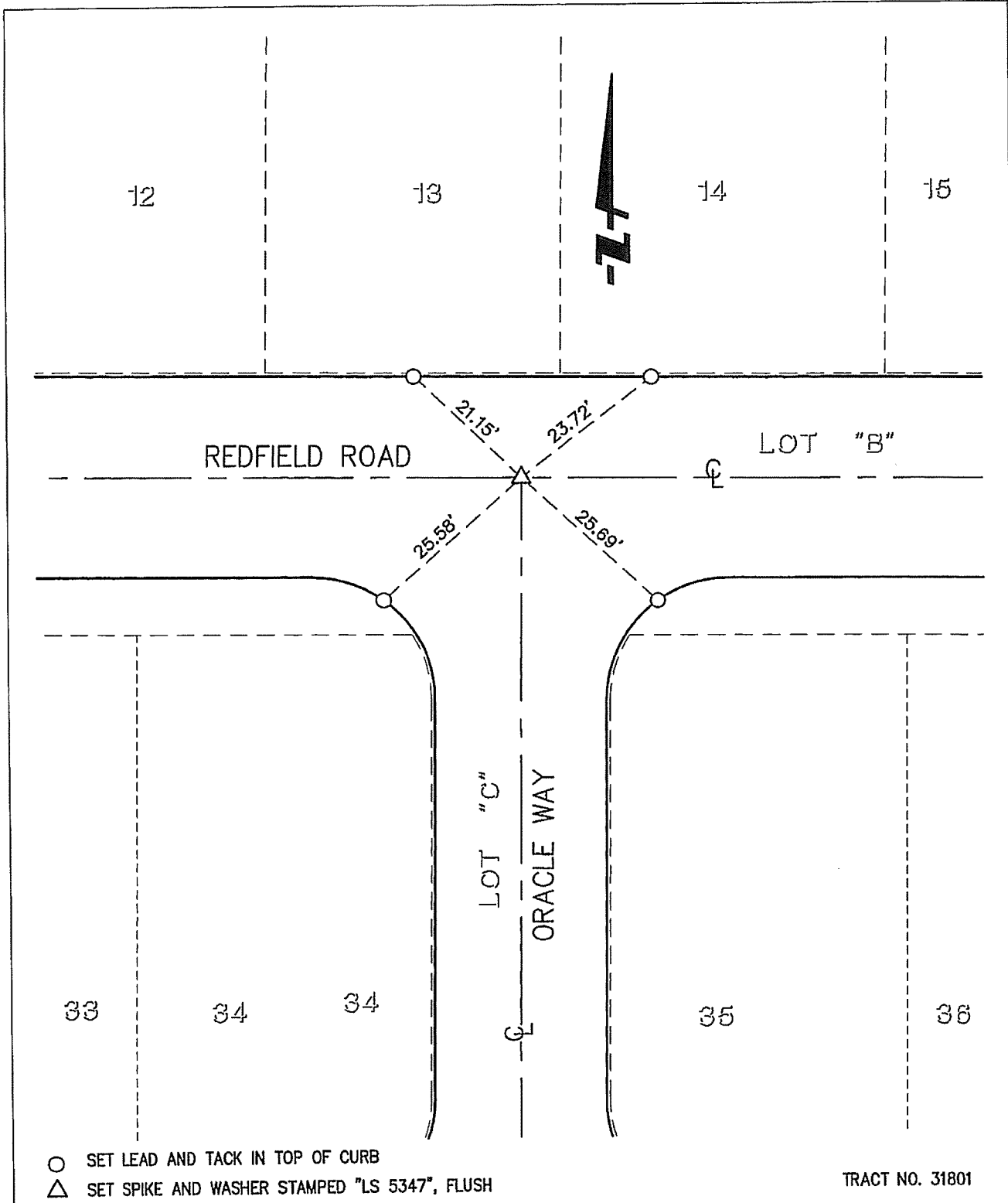


13543.T1F

Street: REDFIELD RD

X-Street: ORACLE WAY



SCALE: 1"=20'
 DATE: 09/25/08
 DRAWN BY: FUSCOE
 F.B.:
 TR-Sec:

OFFICIAL TIE PLAT
 CITY OF RIVERSIDE

FUSCOE
 ENGINEERING

16795 Von Karman, Suite 100, Irvine, CA 92606
 tel 949.474-1960 fax 949.474-5315 www.fuscoe.com

TRACT NO. 31801

SHEET 7 OF 29