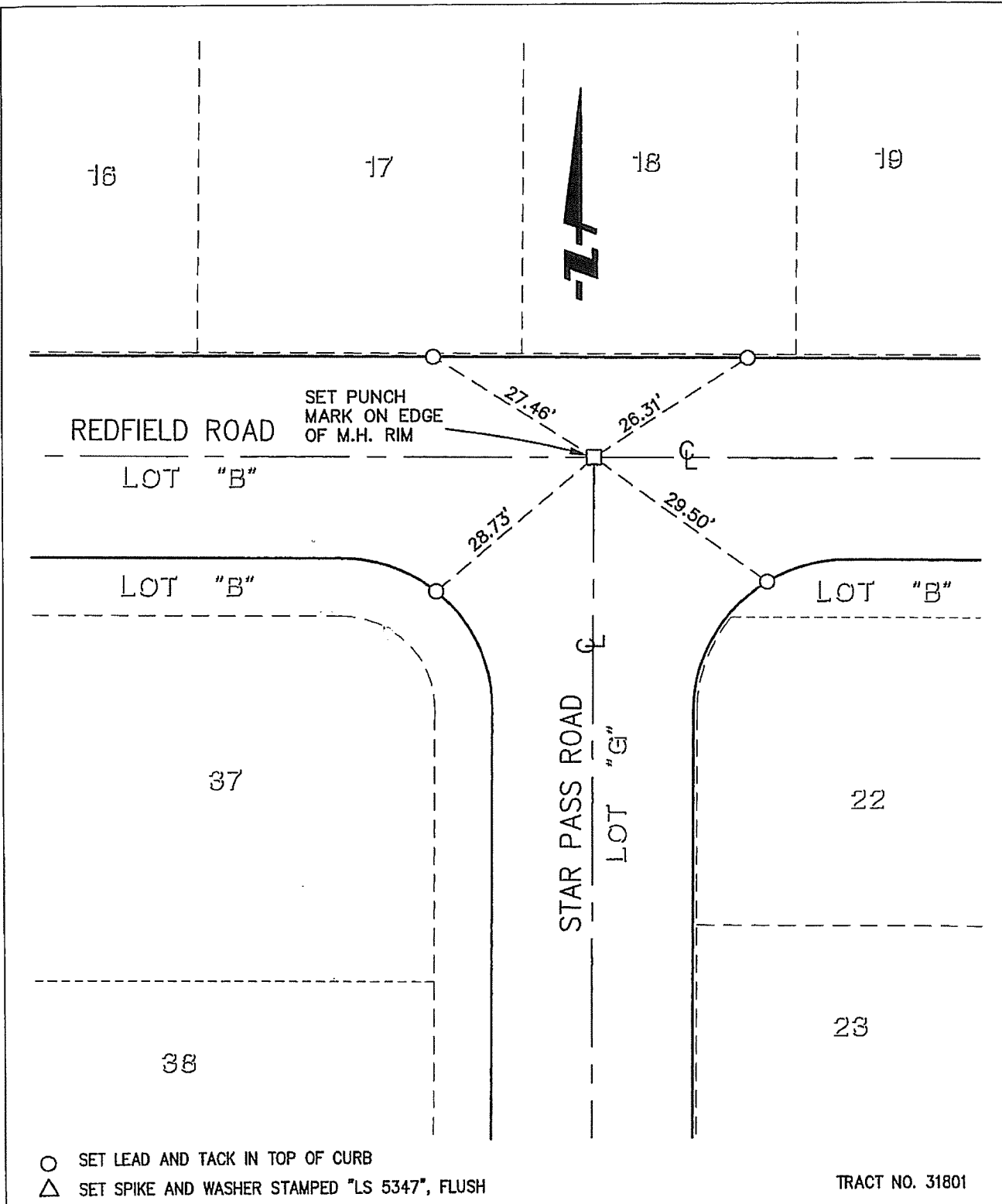


13544.TIF

Street: REDFIELD RD

X-Street: STAR PASS RD



- SET LEAD AND TACK IN TOP OF CURB
- △ SET SPIKE AND WASHER STAMPED "LS 5347", FLUSH

TRACT NO. 31801

SCALE: 1"=20'	<b>OFFICIAL TIE PLAT</b> CITY OF RIVERSIDE	
DATE: 09/25/08		
DRAWN BY: FUSCOE	<b>FUSCOE</b> ENGINEERING 16795 Von Karman, Suite 100, Irvine, CA 92606 tel 949.474-1960 fax 949.474-5315 www.fuscoe.com	
F.B.:		
TR-Sec:		SHEET 8 OF 29