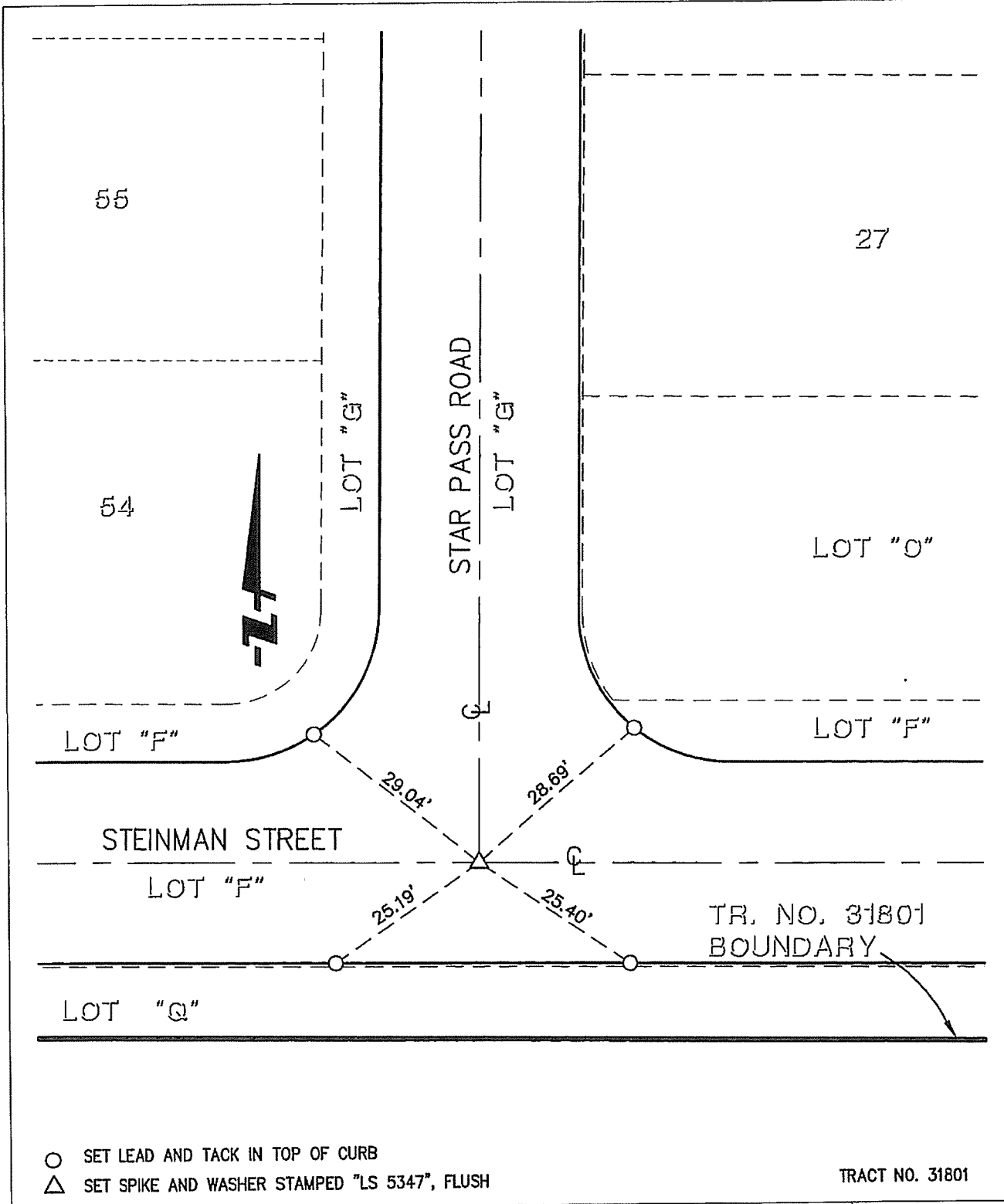


13553.TIF

Street: STEINMAN ST

X-Street: START PASS RD



SCALE: 1"=20'
 DATE: 09/25/08
 DRAWN BY: FUSCOE
 F.B.:
 TR-Sec:

OFFICIAL TIE PLAT
 CITY OF RIVERSIDE

FUSCOE
 ENGINEERING

16795 Von Karman, Suite 100, Irvine, CA 92606
 tel 949.474-1960 fax 949.474-5315 www.fuscoe.com

TRACT NO. 31801

SHEET 17 OF 29