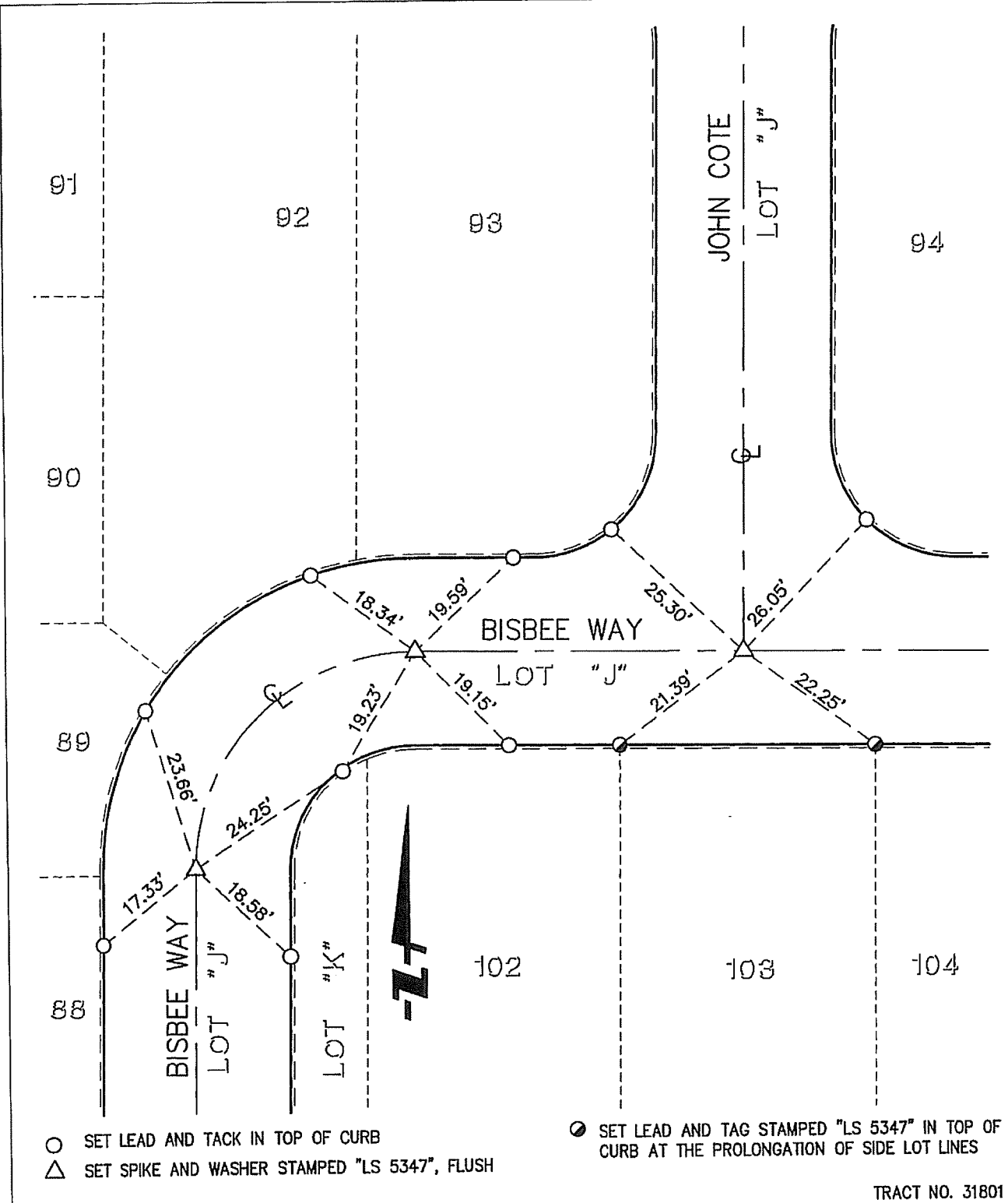


13561.TIF

Street: BISBEE WAY

X-Street: JOHN COTE



- SET LEAD AND TACK IN TOP OF CURB
- △ SET SPIKE AND WASHER STAMPED "LS 5347", FLUSH

- SET LEAD AND TAG STAMPED "LS 5347" IN TOP OF CURB AT THE PROLONGATION OF SIDE LOT LINES

TRACT NO. 31801

SCALE: 1"=20'
 DATE: 09/25/08
 DRAWN BY: FUSCOE
 F.B.:
 TR-Sec:

OFFICIAL TIE PLAT
 CITY OF RIVERSIDE

FUSCOE ENGINEERING
 16795 Von Karman, Suite 100, Irvine, CA 92606
 tel 949.474-1960 fax 949.474-5315 www.fuscoe.com

SHEET 25 OF 29