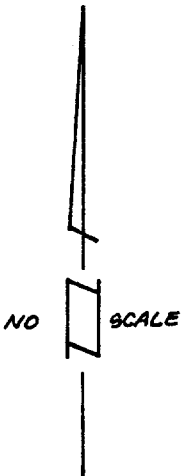
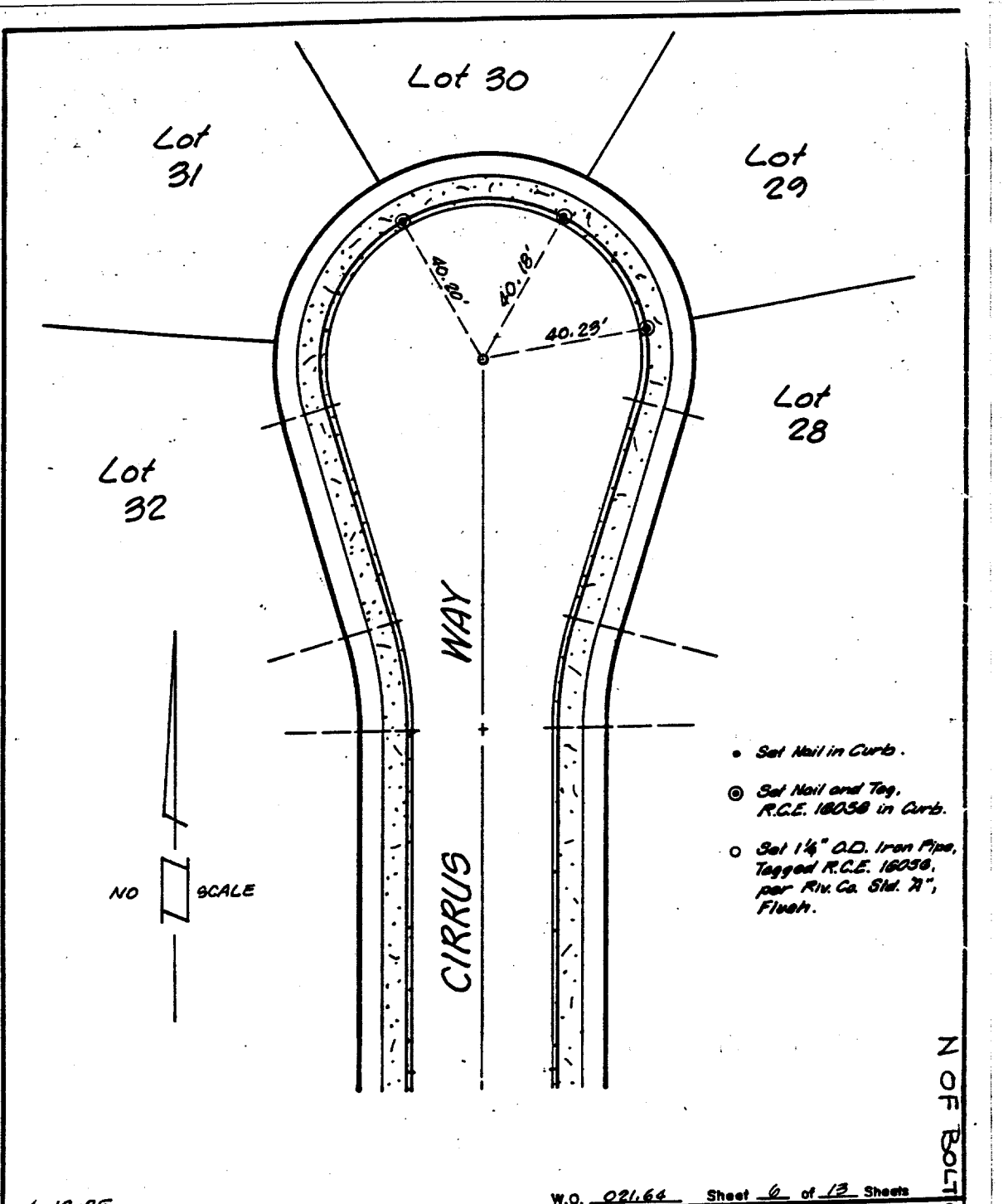


Street: CIRRUS WAY

X-Street: N6 BOLTON
OFFICIAL USE ONLY

1357.TIF



- Set Nail in Curb.
- ⊙ Set Nail and Tag, R.C.E. 16058 in Curb.
- Set 1 1/4" O.D. Iron Pipe, Tagged R.C.E. 16058, per Riv. Co. Std. 7", Flush.

4-12-85

W.O. 021.64 Sheet 6 of 13 Sheets

L A WAINSCOTT & ASSOCIATES
CIVIL ENGINEERS

CITY OF RIVERSIDE

N OF BOLTON

- ✕ FD. Ramset Nail on T/C
- FD. "C" Nail on T/C

- FD. LD. & TK. on T/C
- Set LD. & TK. on T/C

Scale:
Date:
Drawn by:
W.O.:
F.B.:

OFFICIAL TIE PLAT

CITY OF RIVERSIDE

These ties are for the purpose of perpetuating the found monumentation. No claim is made as to the relationship of the points or lines shown hereon to true boundary locations.

TRACT No. 8583

Sheet 1 of 1

File No.: