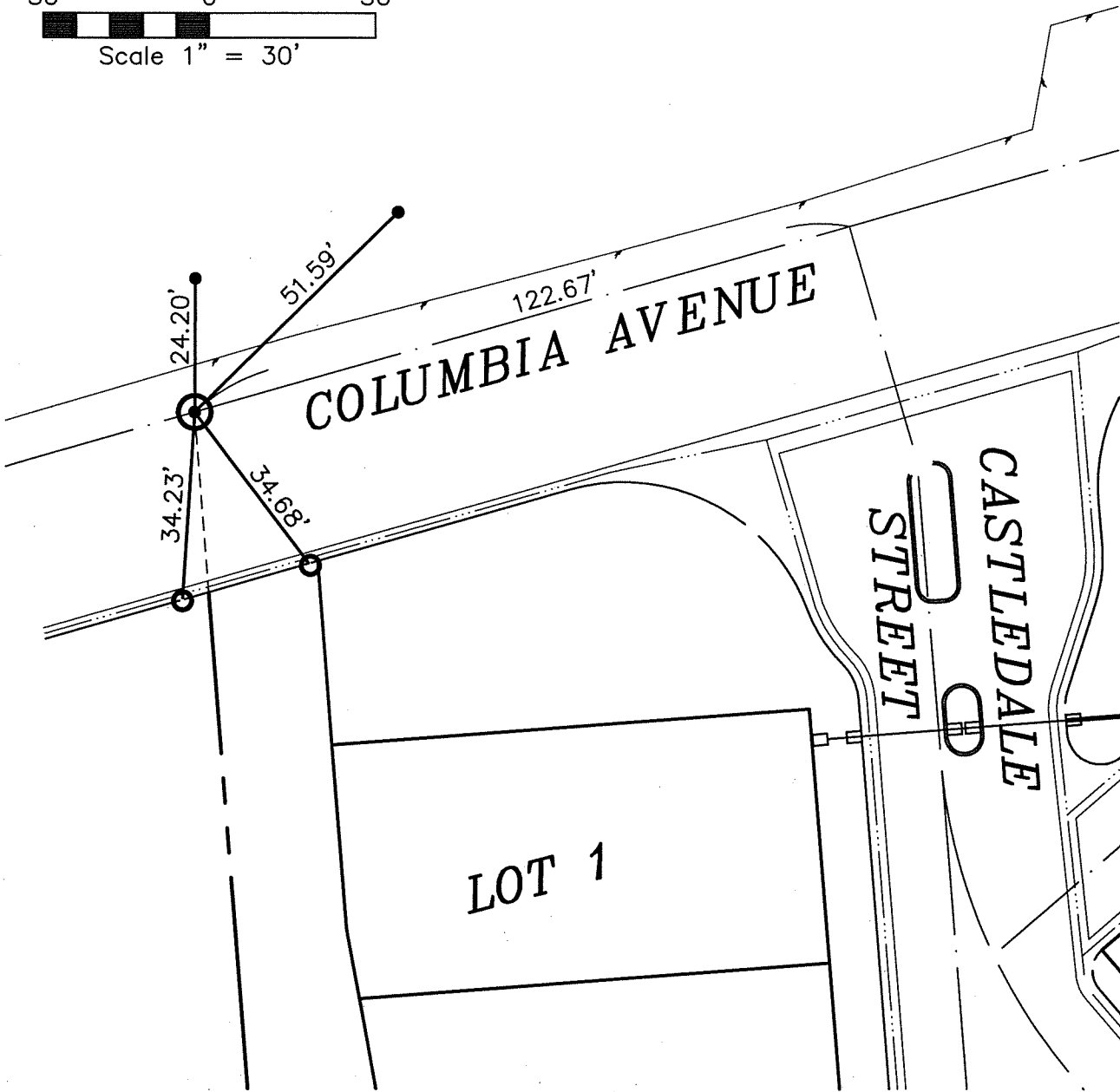
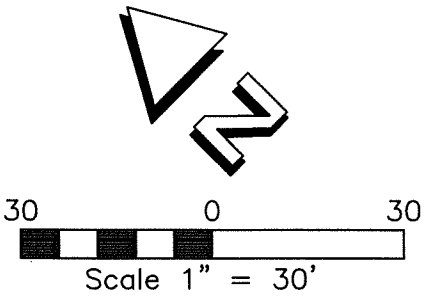


TRACT NO. 31512 CENTERLINE TIES

13581.71F

STREET: COLUMBIA AVE. X-STREET (NEAREST): CASTLEDALE ST.

OFFICIAL USE ONLY



- SET LEAD & TACK ON T/C
- SET 1" IP TPG CP

- ⊙ SPIKE & WASHER LS 7181

DRAWN BY: VGK
 DATE: 08-24-10
 JOB. NO.: 03-061
 FILE: P:\TPG\03\03-06
 1.6\03-061CLTIES.DWG

CIVIL ENGINEERS AND LAND SURVEYORS
THE PRIZM GROUP
 • CYRAX 3-D LASER SCANNING
 • GPS & ROBOTIC SURVEYING
 • GEOMATIC ENGINEERING
 • CIVIL ENGINEERING
 • LAND PLANNING
 310 N. COTA ST. SUITE 1, CORONA, CA 92880
 PHONE: (951) 737-4406 • FAX: (951) 737-4407
 tpg@the-prizm-group.com

OFFICIAL TIE PLAT
 THESE TIES ARE FOR THE PURPOSE OF PERPETUATING THE FOUND MONUMENTATION. NO CLAIM IS MADE AS TO THE RELATIONSHIP OF THE POINTS OF LINES SHOWN HEREON TO TRUE BOUNDARY LOCATIONS.

SHT. NO.
1
 OF 1