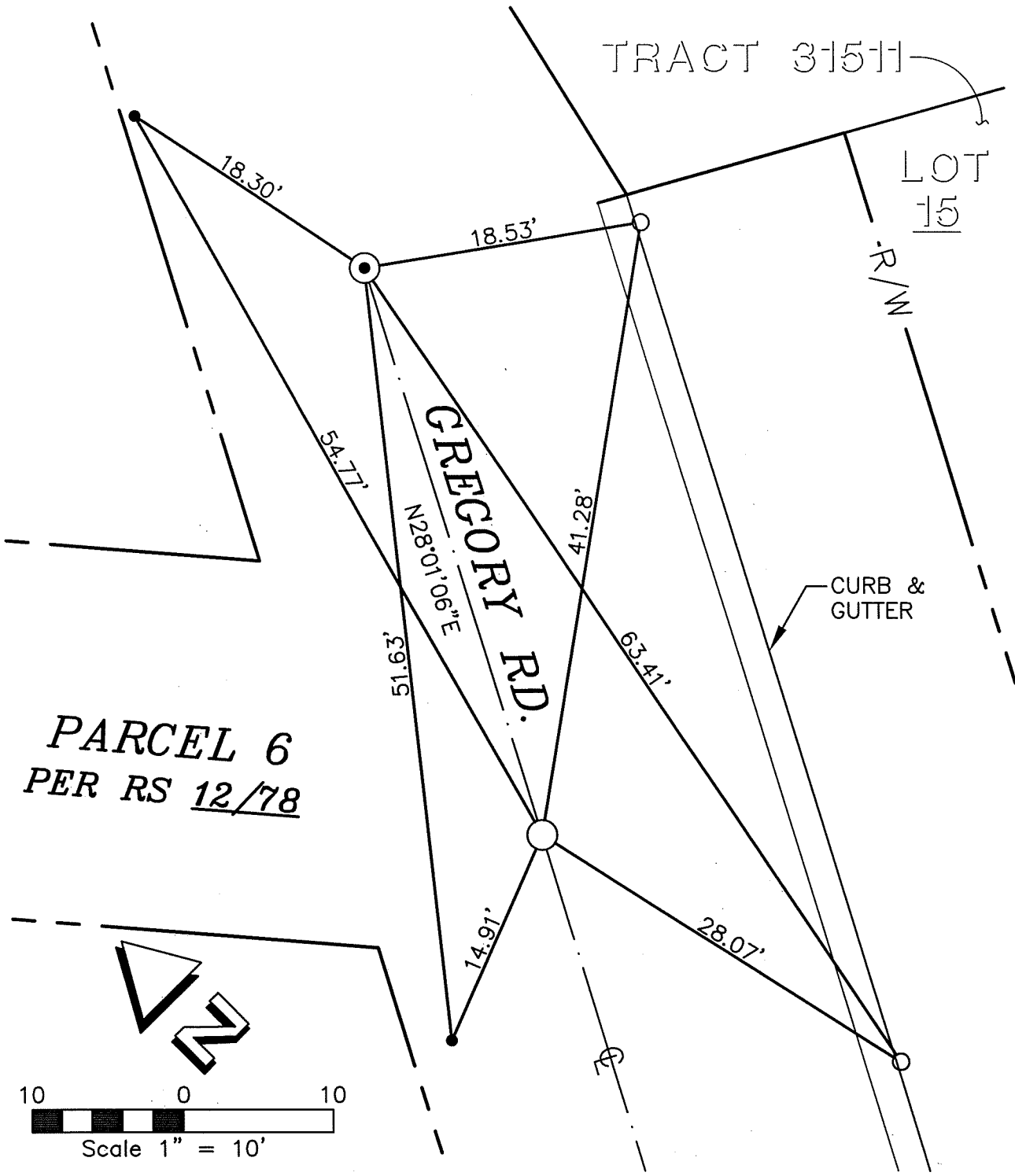


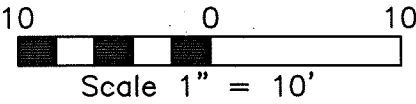
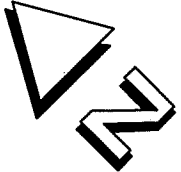
# TRACT NO. 31511 CENTERLINE TIES

13582.71F

STREET: GREGORY ROAD X-STREET (NEAREST): ELDERWOOD COURT  
OFFICIAL USE ONLY



PARCEL 6  
PER RS 12/78



- 3/4" I.P. TAG LS 7181, FLUSH      ⊙ SPIKE & WASHER LS 7181, FLUSH
- SET LEAD & TACK ON T/C              ● SET P.K. NAIL IN ASPHALT

DRAWN BY: VGK  
DATE: 04-30-07  
JOB. NO.: 03-062  
FILE: P:\TPG\03\03-06  
2.1\03-062CLTIES.DWG

CIVIL ENGINEERS AND LAND SURVEYORS

**THE PRIZM GROUP**

- CYRAX 3-D LASER SCANNING
- GPS & ROBOTIC SURVEYING
- GEOMATIC ENGINEERING
- CIVIL ENGINEERING
- LAND PLANNING

310 N. COTA ST. SUITE I, CORONA, CA 92880  
PHONE: (951) 737-4406 • FAX: (951) 737-4407  
tpg@the-prizm-group.com

**OFFICIAL TIE PLAT**  
THESE TIES ARE FOR THE PURPOSE OF PERPETUATING THE FOUND MONUMENTATION. NO CLAIM IS MADE AS TO THE RELATIONSHIP OF THE POINTS OF LINES SHOWN HEREON TO TRUE BOUNDARY LOCATIONS.

SHT. NO.  
**1**  
OF 1