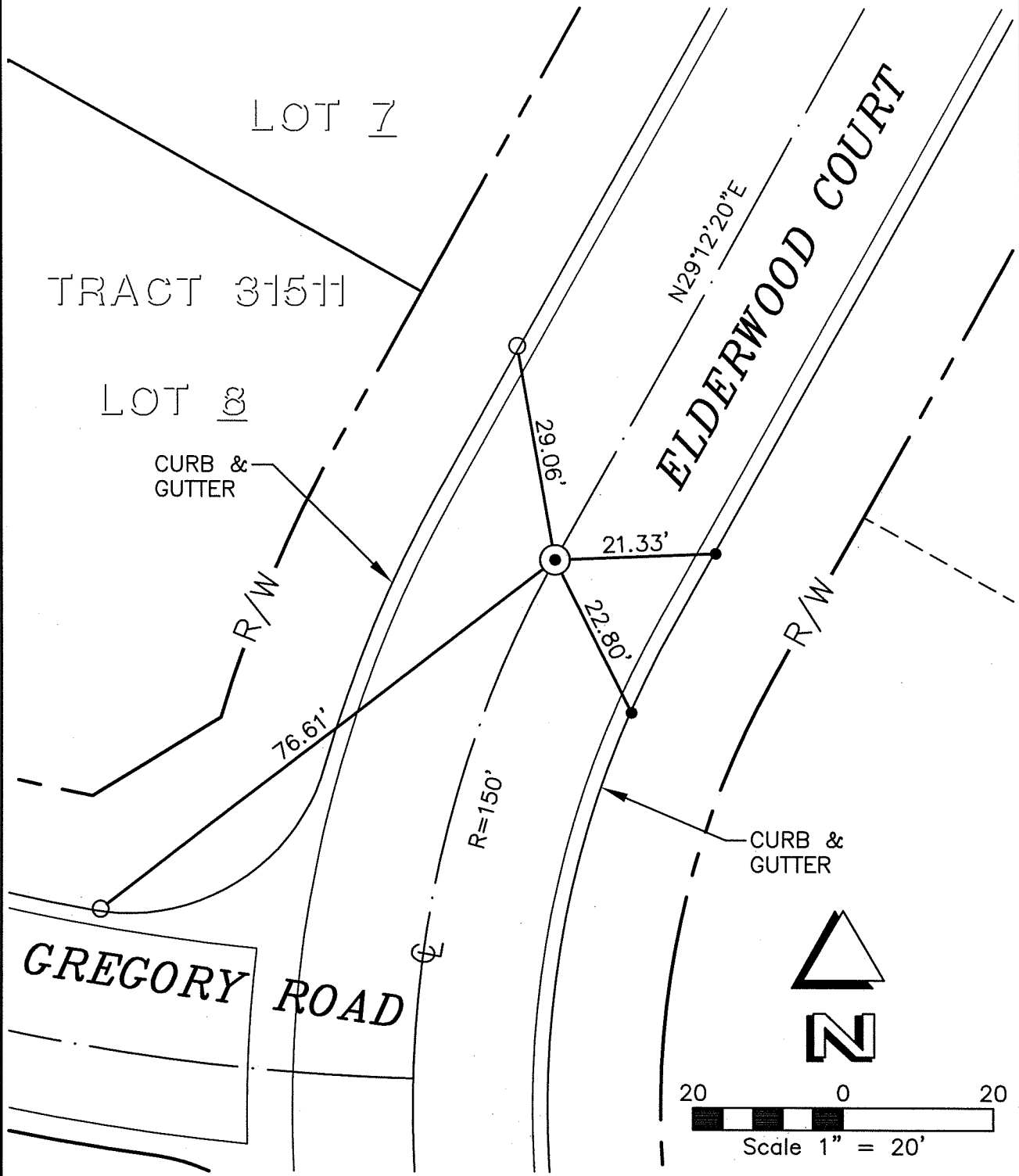


# TRACT NO. 31511 CENTERLINE TIES

13589.TIF

STREET: ELDERWOOD COURT X-STREET (NEAREST): GREGORY ROAD

OFFICIAL USE ONLY



- SET CHISLED "X" ON T/C
- SET LEAD & TACK ON T/C
- ⊙ 3/4" I.P. LS 7181, FLUSH

DRAWN BY: VGK  
 DATE: 04-30-07  
 JOB. NO.: 03-062  
 FILE: P:\TPG\03\03-06  
 2.1\03-062CLTIES.DWG

CIVIL ENGINEERS AND LAND SURVEYORS  
**THE PRIZM GROUP**  
 • CYRAX 3-D LASER SCANNING  
 • GPS & ROBOTIC SURVEYING  
 • GEOMATIC ENGINEERING  
 • CIVIL ENGINEERING  
 • LAND PLANNING  
 310 N. COTA ST. SUITE 1, CORONA, CA 92880  
 PHONE: (951) 737-4406 • FAX: (951) 737-4407  
 tpg@the-prizm-group.com

**OFFICIAL TIE PLAT**  
 THESE TIES ARE FOR THE PURPOSE OF PERPETUATING THE FOUND MONUMENTATION. NO CLAIM IS MADE AS TO THE RELATIONSHIP OF THE POINTS OF LINES SHOWN HEREON TO TRUE BOUNDARY LOCATIONS.

SHT. NO.  
**1**  
 OF 1