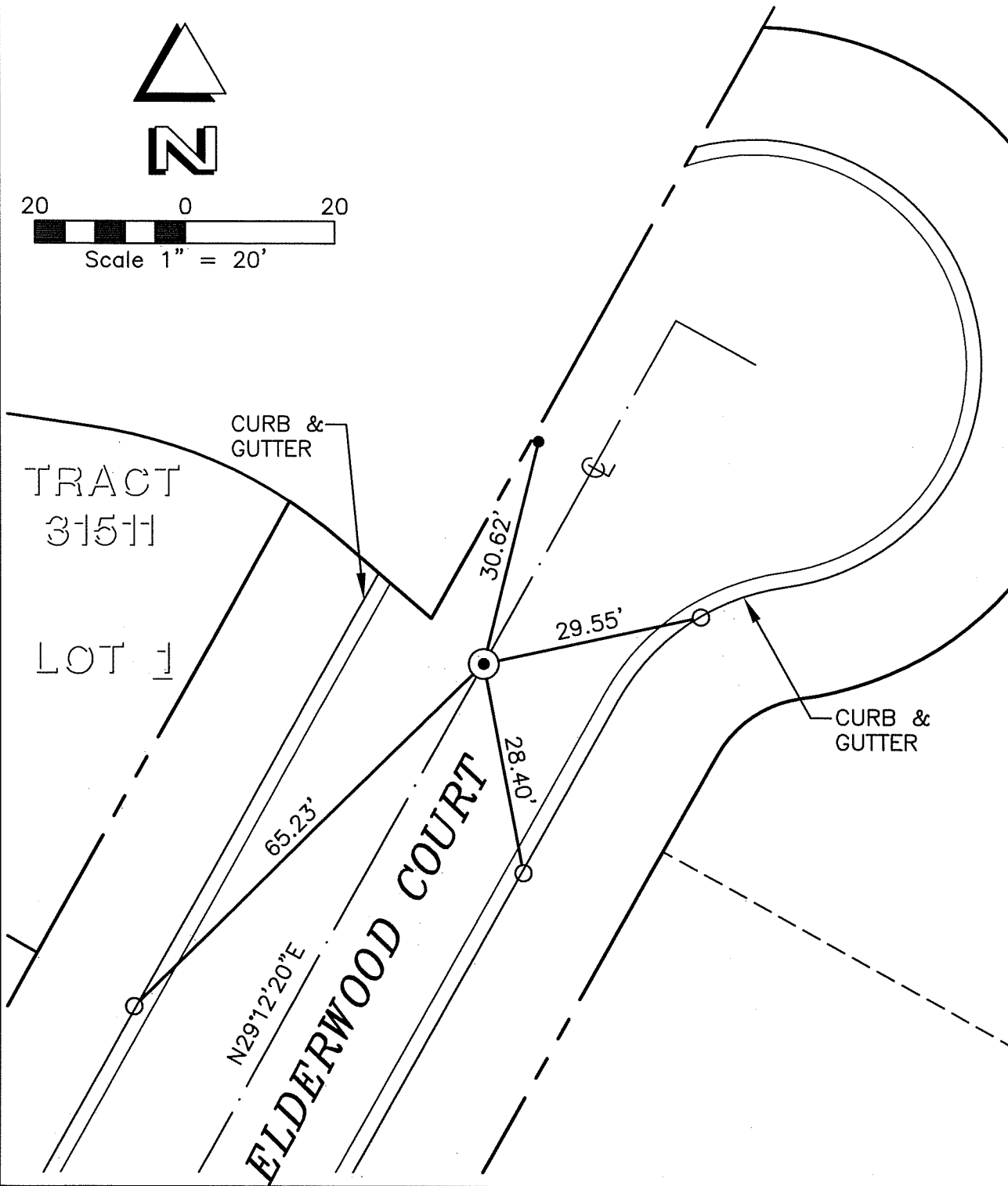
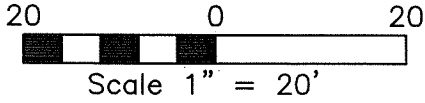


TRACT NO. 31511 CENTERLINE TIES



- SET P.K. NAIL
- SET LEAD & TACK ON T/C
- ⊙ 1" I.P. LS 7181, FLUSH

13590.71E
 STREET: ELDERWOOD COURT X-STREET (NEAREST): GREGORY ROAD
 OFFICIAL USE ONLY

DRAWN BY: VGK
 DATE: 04-30-07
 JOB. NO.: 03-062
 FILE: P:\TPG\03\03-062.1\03-062CLTIES.DWG

CIVIL ENGINEERS AND LAND SURVEYORS
THE PRIZM GROUP
 • CYRAX 3-D LASER SCANNING
 • GPS & ROBOTIC SURVEYING
 • GEOMATIC ENGINEERING
 • CIVIL ENGINEERING
 • LAND PLANNING
 310 N. COTA ST. SUITE 1, CORONA, CA 92880
 PHONE: (951) 737-4406 • FAX: (951) 737-4407
 tpg@the-prizm-group.com

OFFICIAL TIE PLAT
 THESE TIES ARE FOR THE PURPOSE OF PERPETUATING THE FOUND MONUMENTATION. NO CLAIM IS MADE AS TO THE RELATIONSHIP OF THE POINTS OF LINES SHOWN HEREON TO TRUE BOUNDARY LOCATIONS.

SHT. NO.
1
 OF 1