

136231.TIF

Street:

WASHINGTON STREET

X-Street:

COOLIDGE AVENUE

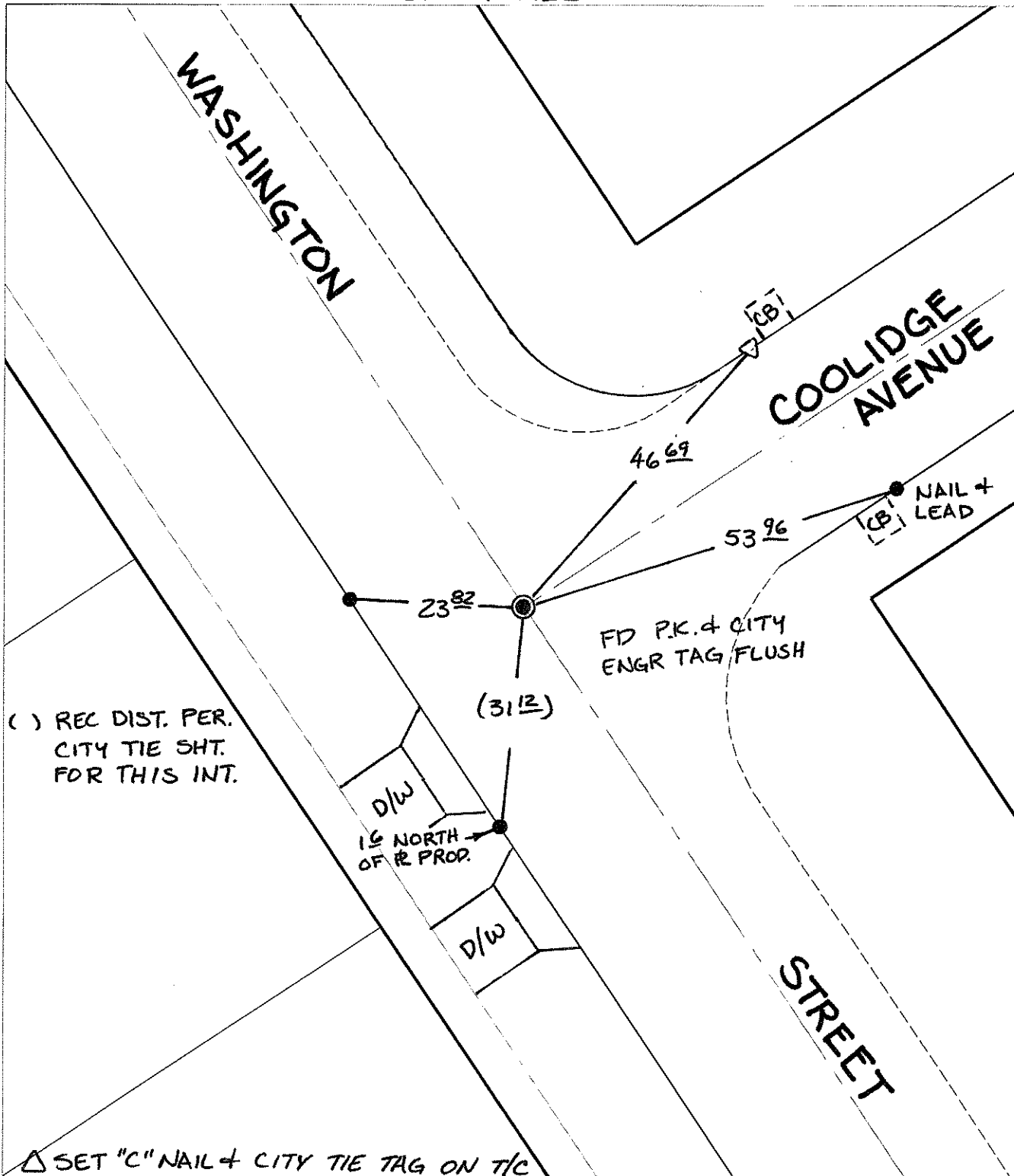
OFFICIAL USE ONLY

SWING TIES

WASHINGTON

COOLIDGE AVENUE

STREET



() REC DIST. PER. CITY TIE SHT. FOR THIS INT.

FD P.K. & CITY ENGR TAG FLUSH

NAIL + LEAD

1/8 NORTH OF R. PROD.

(3112)

△ SET "C" NAIL + CITY TIE TAG ON T/C

- × FD. Ramset Nail on T/C
- FD. LD. & TK. on T/C
- FD. "C" Nail on T/C
- Set LD. & TK. on T/C

P.K. and City Engineer tag to be set @ surface after street construction is complete. (If possible)

Scale: 1" = 20'
 Date: 12/15/08
 Drawn by: pw
 F.B.:
 TR-Sec: T3SR5W-3

OFFICIAL TIE PLAT

CITY OF RIVERSIDE

These ties are for the purpose of perpetuating the found monumentation. No claim is made as to the relationship of the points or lines shown hereon to true boundary locations.



Sheet 1 of 1
 Cadme MB: 53-8