

13642.TIF



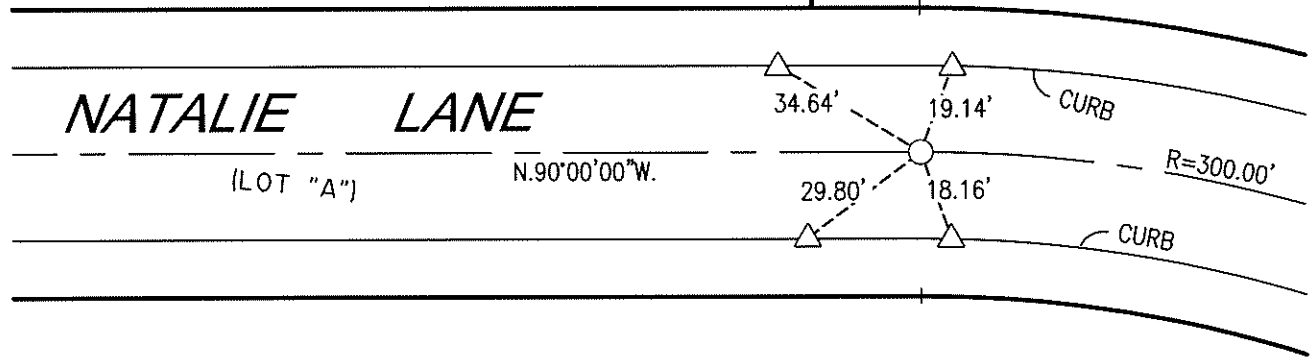
scale: 1"=40'

LOT 6

LOT 7

(SEE SHEET 1)

(SEE SHEET 3)



LOT 2



NOTE: BEARINGS AND RADIUS DATA ARE RECORD PER TR 29296

SB&O INC.
 PLANNING ENGINEERING SURVEYING
 41888 Enterprise Circle North, Suite 128
 Temecula, Ca. 92590
 951-695-9900
 951-695-9901 Fax

LEGEND:
 ○ SPIKE AND WASHER TAGGED LS 6152
 △ CONCRETE NAIL IN TOP OF CURB
 ▲ NAIL & TAG, LS 6152, IN TOP OF CURB

STREET CENTERLINE TIES
 NATALIE LANE
 TR 29296, MB 358/91-94

JN 66233

JANUARY 2008

SHEET 2 OF 4