

13643.TIF



scale: 1"=40'

LOT 7

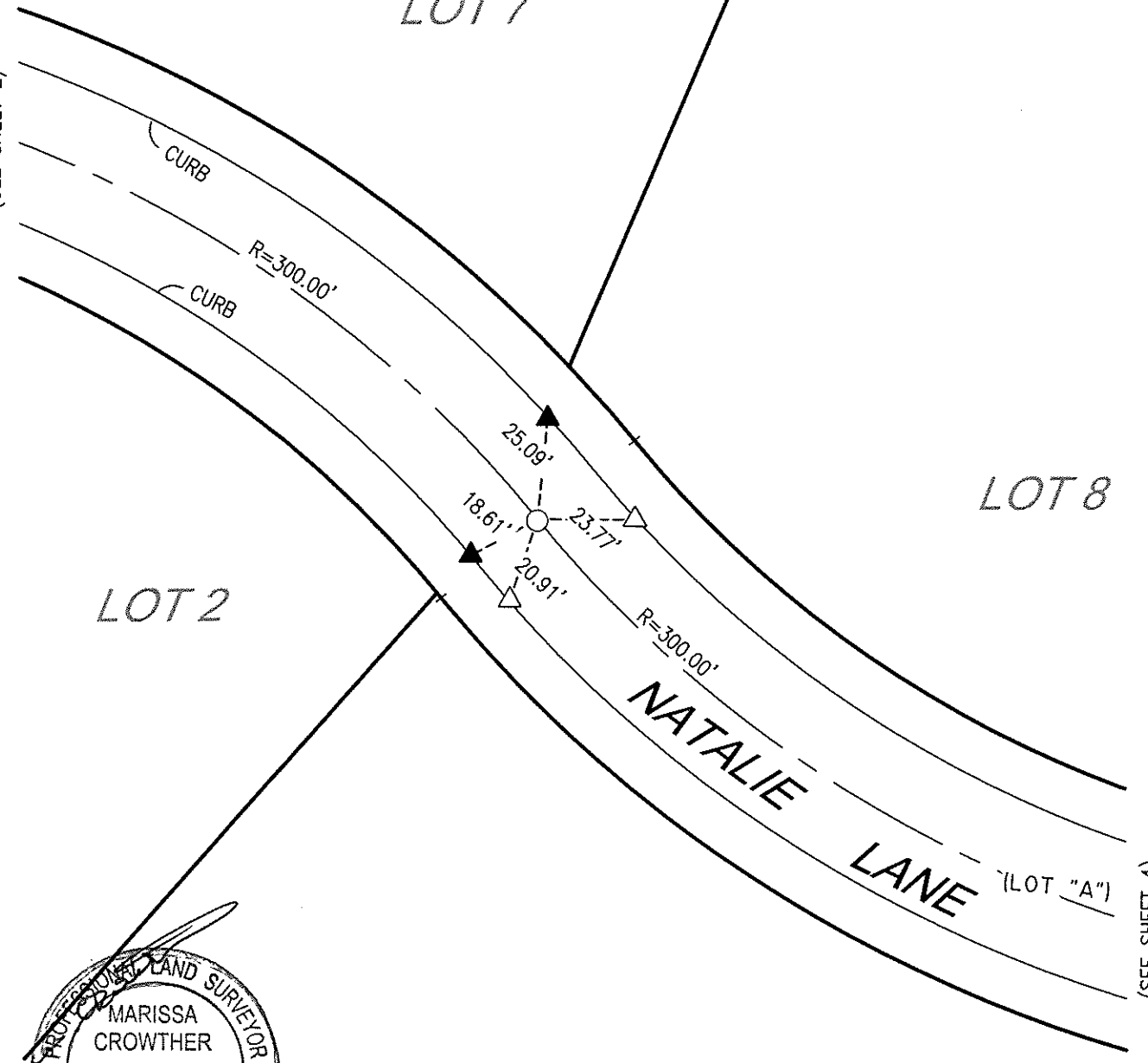
LOT 8

LOT 2

LOT 1

(SEE SHEET 2)

(SEE SHEET 4)



NOTE: BEARINGS AND RADIUS DATA ARE RECORD PER TR 29296

SB&O INC.
 PLANNING ENGINEERING SURVEYING
 #1389 Enterprise Circle North, Suite 128
 Temecula, Ca. 92590
 951-695-8800
 951-695-8801 Fax

LEGEND:

- SPIKE AND WASHER TAGGED LS 6152
- △ CONCRETE NAIL IN TOP OF CURB
- ▲ NAIL & TAG, LS 6152, IN TOP OF CURB

STREET CENTERLINE TIES

NATALIE LANE
 TR 29296, MB 358/91-94

JN 66233

JANUARY 2008

SHEET 3 OF 4