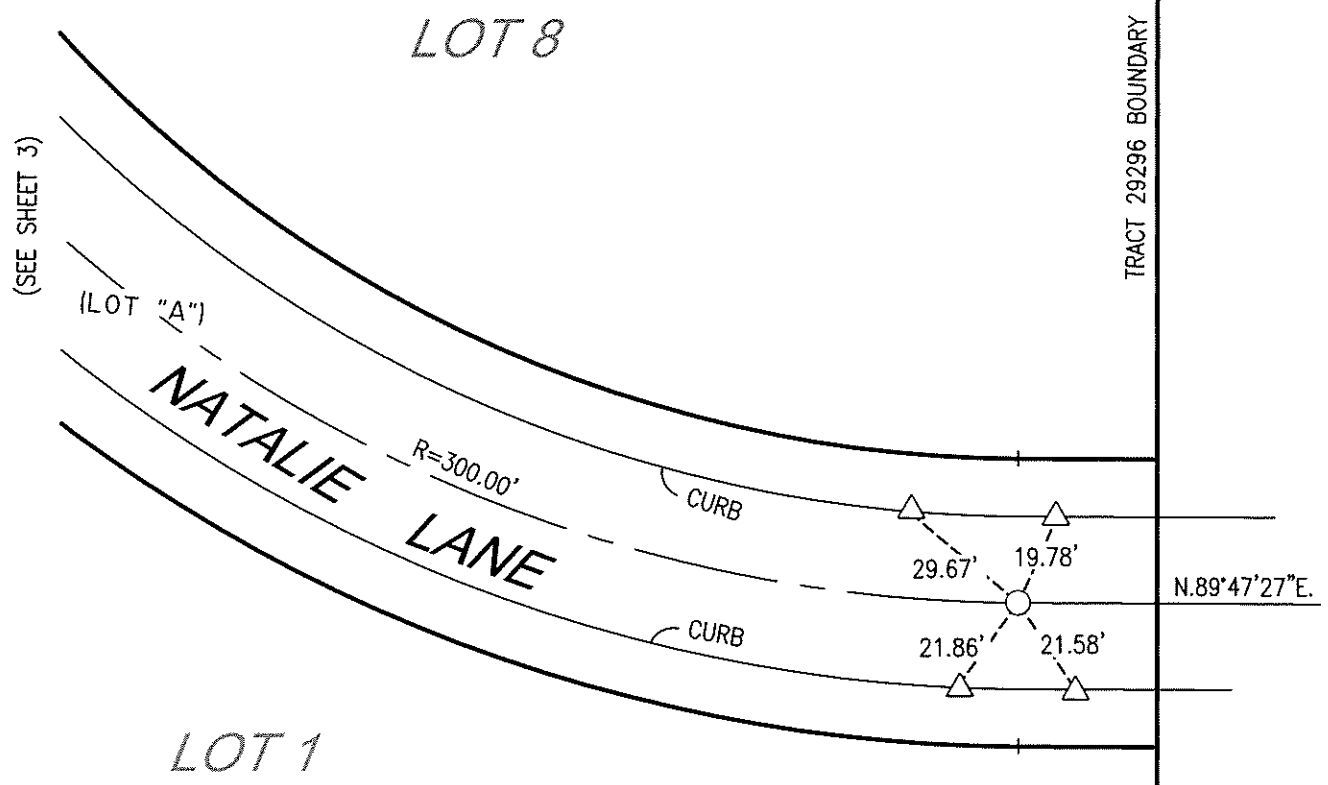


13694.TIF



scale: 1"=40'



(SEE SHEET 3)

(LOT "A")

NATALIE LANE

R=300.00'

CURB

CURB

TRACT 29296 BOUNDARY

N.89°47'27"E.

29.67'

19.78'

21.86'

21.58'

LOT 1



NOTE: BEARINGS AND RADIUS DATA ARE RECORD PER TR 29296

SB&O INC.
 PLANNING ENGINEERING SURVEYING
 41889 Enterprise Circle North, Suite 128
 Temecula, Ca. 92590
 951-895-8900
 951-895-8901 Fax

LEGEND:
 ○ SPIKE AND WASHER TAGGED LS 6152
 △ CONCRETE NAIL IN TOP OF CURB
 ▲ NAIL & TAG, LS 6152, IN TOP OF CURB

STREET CENTERLINE TIES
 NATALIE LANE
 TR 29296, MB 358/91-94

JN 66233

JANUARY 2008

SHEET 4 OF 4