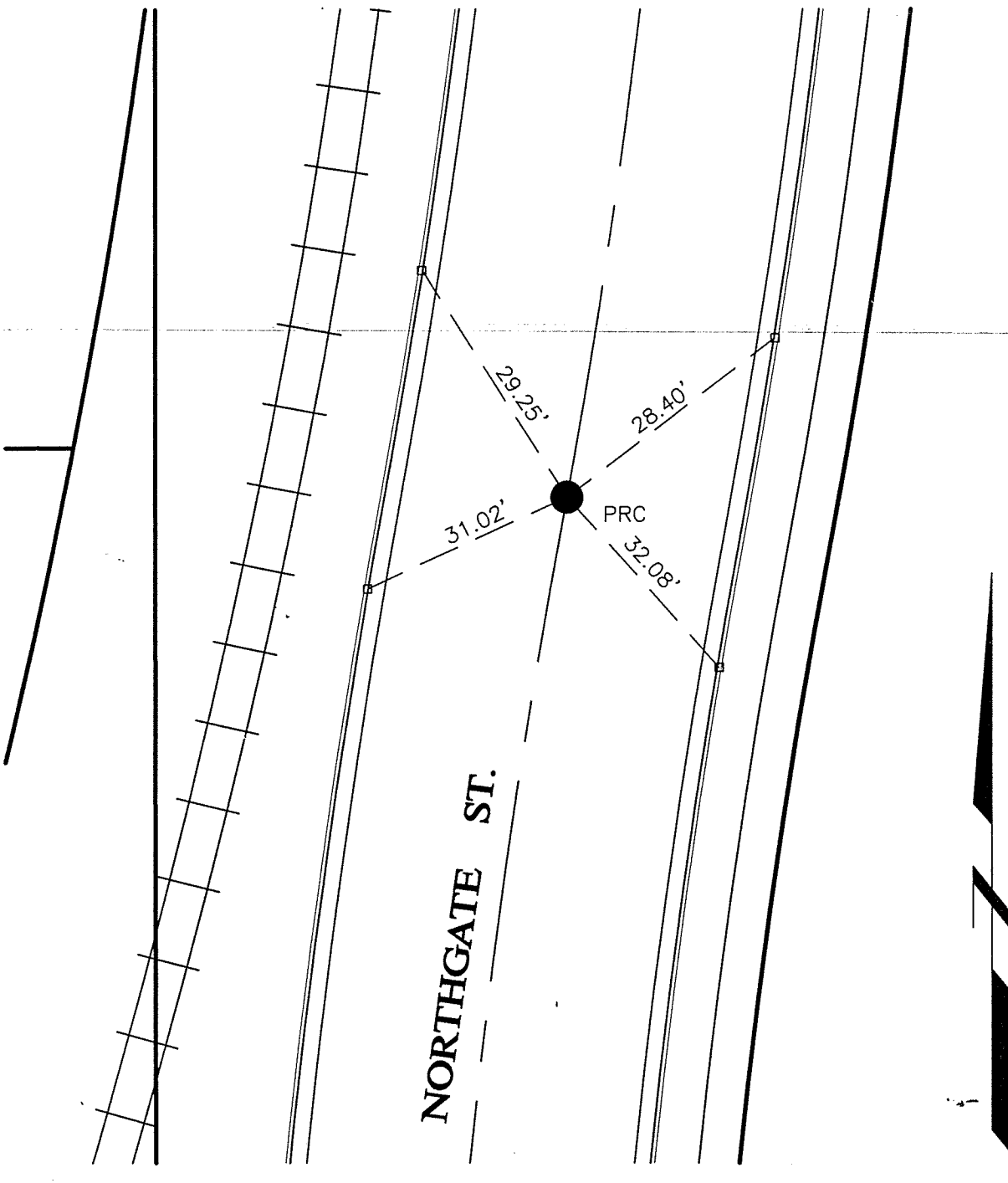


Street: **NORTHGATE STREET**

OFFICIAL USE ONLY
X-Street:

MARLBOROUGH AVE - COLUMBIA AVE



- _____ GIN SPIKE AND TAG STAMPED LS5306, UNLESS NOTED OTHERWISE
- _____ NAIL & TAG IN TOP OF CURB

Scale: NTS
 Date: December 2010
 Drawn by: AWM
 W.O.: 20159

**OFFICIAL TIE PLAT
 CITY OF RIVERSIDE**

These ties are for purpose of perpetuating the found monumentation. No claim is made as to the relationship of the points of lines shown hereon to true boundary locations.

**PARCEL MAP 30325
 PMB 202/82-83**
 Sheet 3 of 6