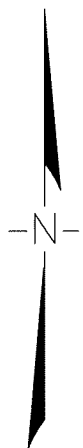
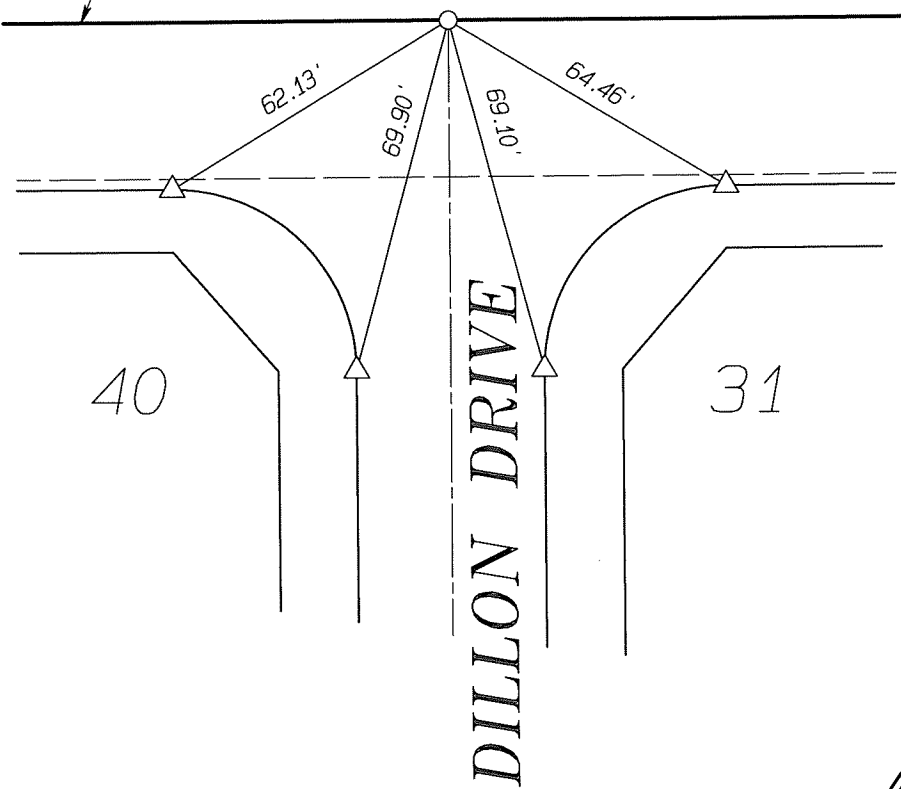


13706.T1F



LOT 4, BLK. 70  
ALESSANDRO TRACT  
M.B. 6/13, S.B. CO.

C/L KRAMERIA AVENUE



- INDICATES SET GEAR SPIKE AND WASHER STAMPED LS 5529, FLUSH
- △ INDICATES SET RAMSET NAIL IN CURB
- INDICATES SET RAMSET NAIL & TAG STAMPED LS 5529 IN CURB

ALBERT A.  
**WEBB**  
ASSOCIATES

CIVIL ENGINEERS  
3788 McCRAY ST.  
RIVERSIDE CA. 92506  
(951) 686-1070



SCALE:	NTS
DATE:	05-31-2006
CHK. BY:	DBW
DR. BY:	MJ.
W.D.:	05-193
F.B.:	2002

**OFFICIAL TIE PLAT**  
CITY OF RIVERSIDE

TRACT 31361

SHEET	2
OF 11 SHEETS	
FILE NO: 03-340TIES.pro	