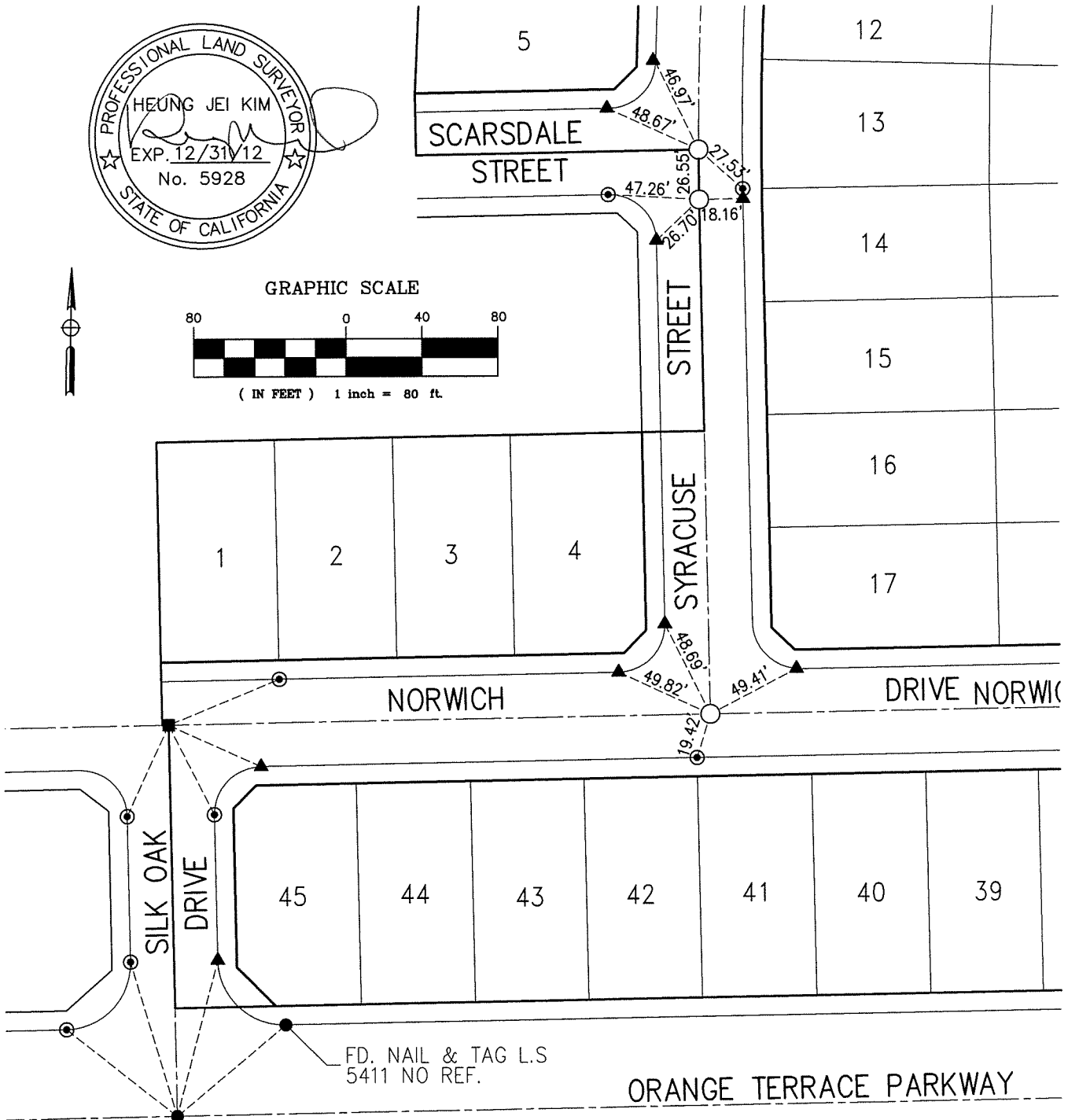
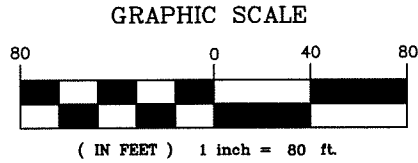


13719.TIF



FD. NAIL & TAG L.S
5411 NO REF.

LEGEND:

- INDICATES SET 1" I.P., FLUSH, W/TAG L.S 5928 UNLESS OTHERWISE NOTED.
- ▲ SET LEAD AND TAG MARKED L.S. 5928 ON TOP OF CONCRETE CURB AT THE PROLONGATION OF SIDE LOT LINES FOR FRONT CORNERS, ALSO FOR CURB RETURNS, E.C.'S & B.C.'S. UNLESS OTHERWISE NOTED.
- INDICATES FOUND 1", FLUSH, I.P. WITH PLASTIC PLUG MARKED LS. 3018 PER M.B. 288/28-31, UNLESS OTHERWISE NOTED.
- ⊙ INDICATES FOUND NAIL WITH R.C.E. TAG IN TOP OF CURB AT THE PROLONGATION OF SIDE LOT LINES PER M.B. 295/62-64.
- INDICATES FOUND 1/2", FLUSH, SPIKE AND R.C.E. 17550 TAG PER M.B. 288/28-31.

Pacific Coast Land Consultants, Inc.
 CIVIL ENGINEERS, LAND SURVEYORS, PLANNERS
 25096 Jefferson Ave., Suite "D" Murrieta CA., 92562
 TEL. NO.: (951) 698-1350 FAX. NO.: (951) 698-8657
 SCALE: 1"=80' | DATE OF SURVEY: 11-19-10 | PREPARED BY: BENJIE
 S:\Land Projects 2004\21709-6 BROOKFIELD HOMES\dwg\SWNG TIES\SWNG TIES.dwg

CENTERLINE TIES
 NORWICH DRIVE, LINDENHURST STREET
 SCARSDALE STREET & SYRACUSE STREET
 TR-21709-6, MB. 295/62-64