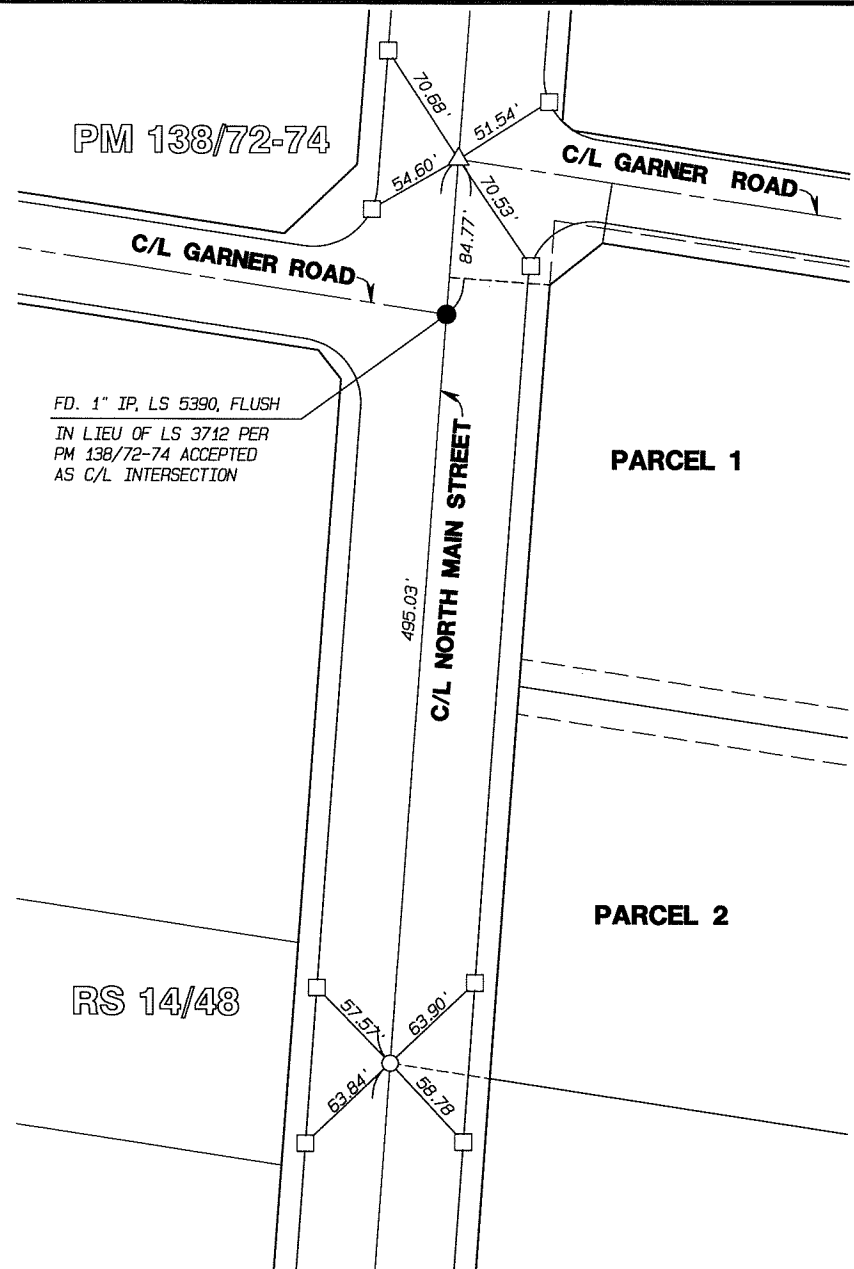


13724TIE

STREET: GARNER RD. X-STREET: N MAIN ST.

OFFICIAL USE ONLY



ALBERT A. WEBB CIVIL ENGINEERS
 3788 McCRAY ST.
 RIVERSIDE CA. 92506
 (951) 686-1070



- INDICATES SET 1" IP TAGGED LS 5529, FLUSH
- △ INDICATES SET GIN SPIKE AND WASHER STAMPED LS 5529, FLUSH
- INDICATES SET RAMSET ON TOP OF CURB

SCALE:	NTS
DATE:	11-24-2010
CHK. BY:	
DR. BY:	
W.D.:	06-0321
F.B.:	2006/660-670

OFFICIAL TIE PLAT
 CITY OF RIVERSIDE
 PARCEL MAP 35354

SHEET	1
OF 1 SHEETS	
FILE NO.:	TIES.pro