

SWING TIES

13728.T1F

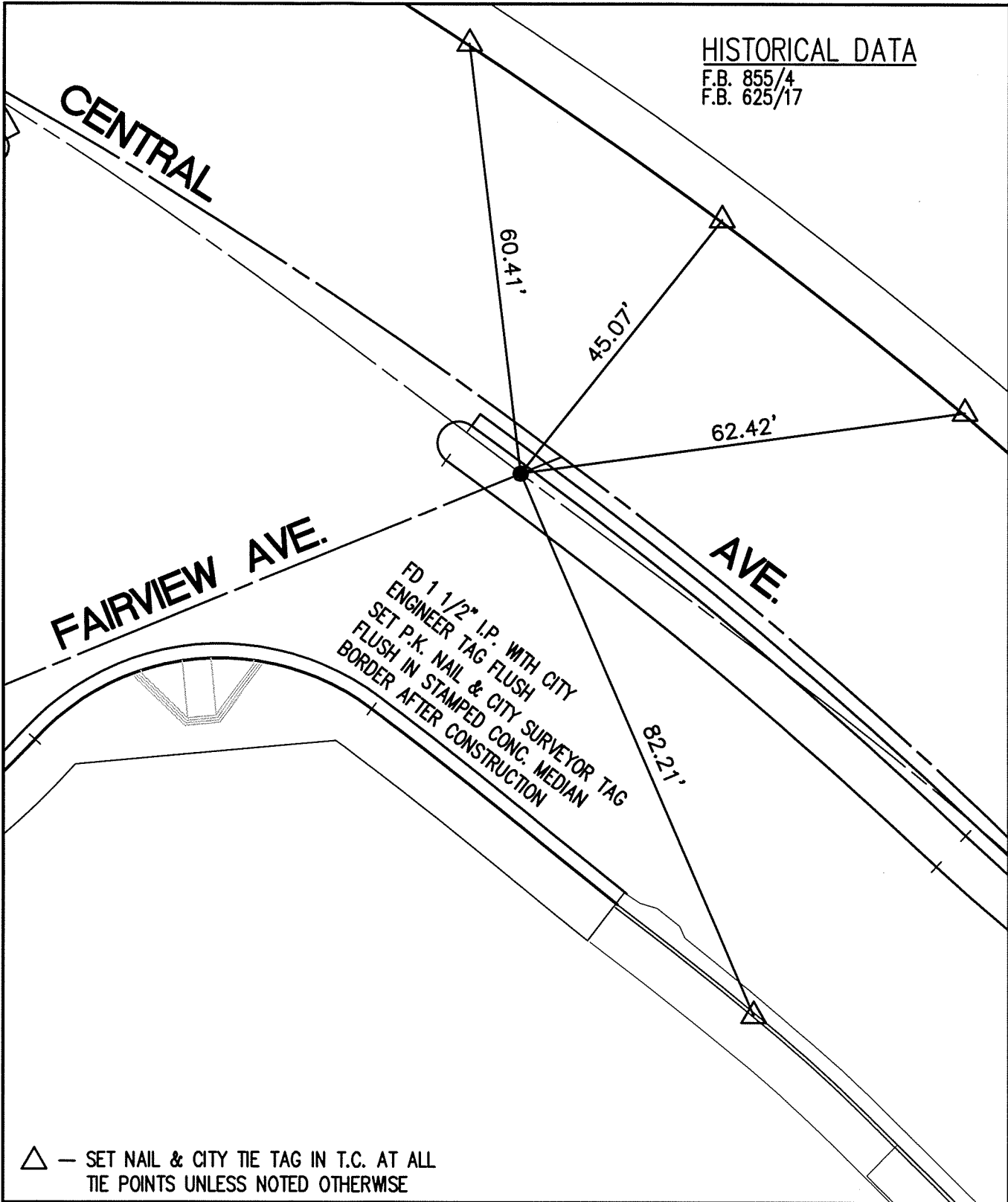
STREET: CENTRAL AVENUE

OFFICIAL USE ONLY

X-STREET: FAIRVIEW AVE SOUTHERLY

HISTORICAL DATA

F.B. 855/4
F.B. 625/17



△ — SET NAIL & CITY TIE TAG IN T.C. AT ALL TIE POINTS UNLESS NOTED OTHERWISE

SCALE: 1"=20'

DATE: 2/2011

DRAWN BY: B DURENTE

F.B.: SEE HISTORICAL DATA

SEC: 36 T.2 S.,R.5 W

OFFICIAL TIE PLAT CITY OF RIVERSIDE

THESE TIES ARE FOR THE PURPOSE OF PERPETUATING THE FOUND MONUMENTATION. NO CLAIM IS MADE AS THE RELATIONSHIP OF THE POINTS OR LINES SHOWN HEREON TO TRUE BOUNDARY LOCATIONS



SHEET 1 OF 1