

13747.TIF

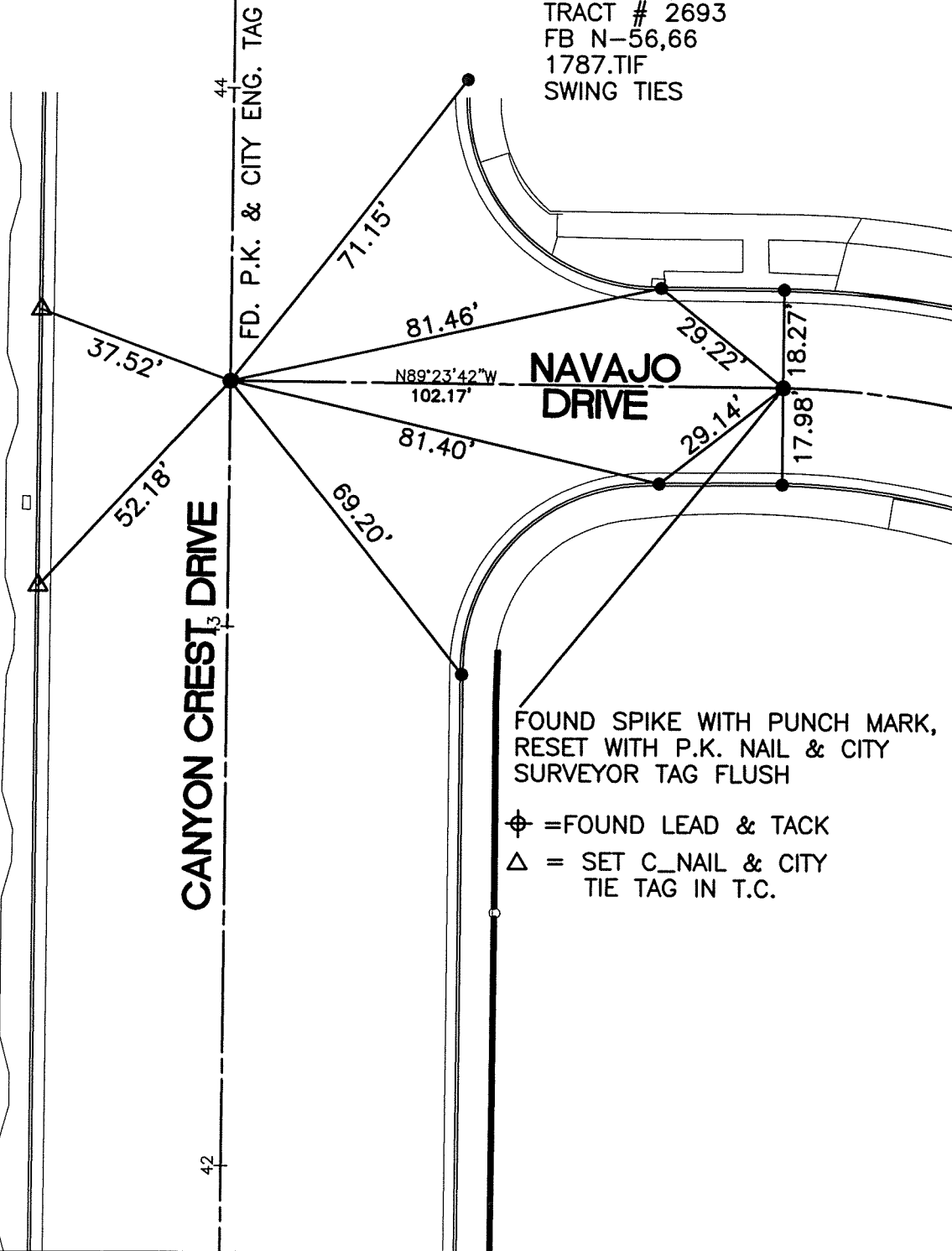
STREET: CANYON CREST DRIVE

OFFICIAL USE ONLY

X-STREET: NAVAJO DRIVE

**HISTORICAL DATA**

CRFB 851/44  
TRACT # 2693  
FB N-56,66  
1787.TIF  
SWING TIES



FOUND SPIKE WITH PUNCH MARK,  
RESET WITH P.K. NAIL & CITY  
SURVEYOR TAG FLUSH

- ⊕ = FOUND LEAD & TACK
- △ = SET C\_NAIL & CITY TIE TAG IN T.C.

SCALE: 1"=30'
DATE: 04/26/2011
DRAWN BY: B DURENTE
F.B.: SEE HISTORICAL DATA
SEC: 29/30 T. 2 S., R. 4 W

**OFFICIAL TIE PLAT**  
CITY OF RIVERSIDE

THESE TIES ARE FOR THE PURPOSE OF PERPETUATING THE FOUND MONUMENTATION. NO CLAIM IS MADE AS THE RELATIONSHIP OF THE POINTS OR LINES SHOWN HEREON TO TRUE BOUNDARY LOCATIONS

