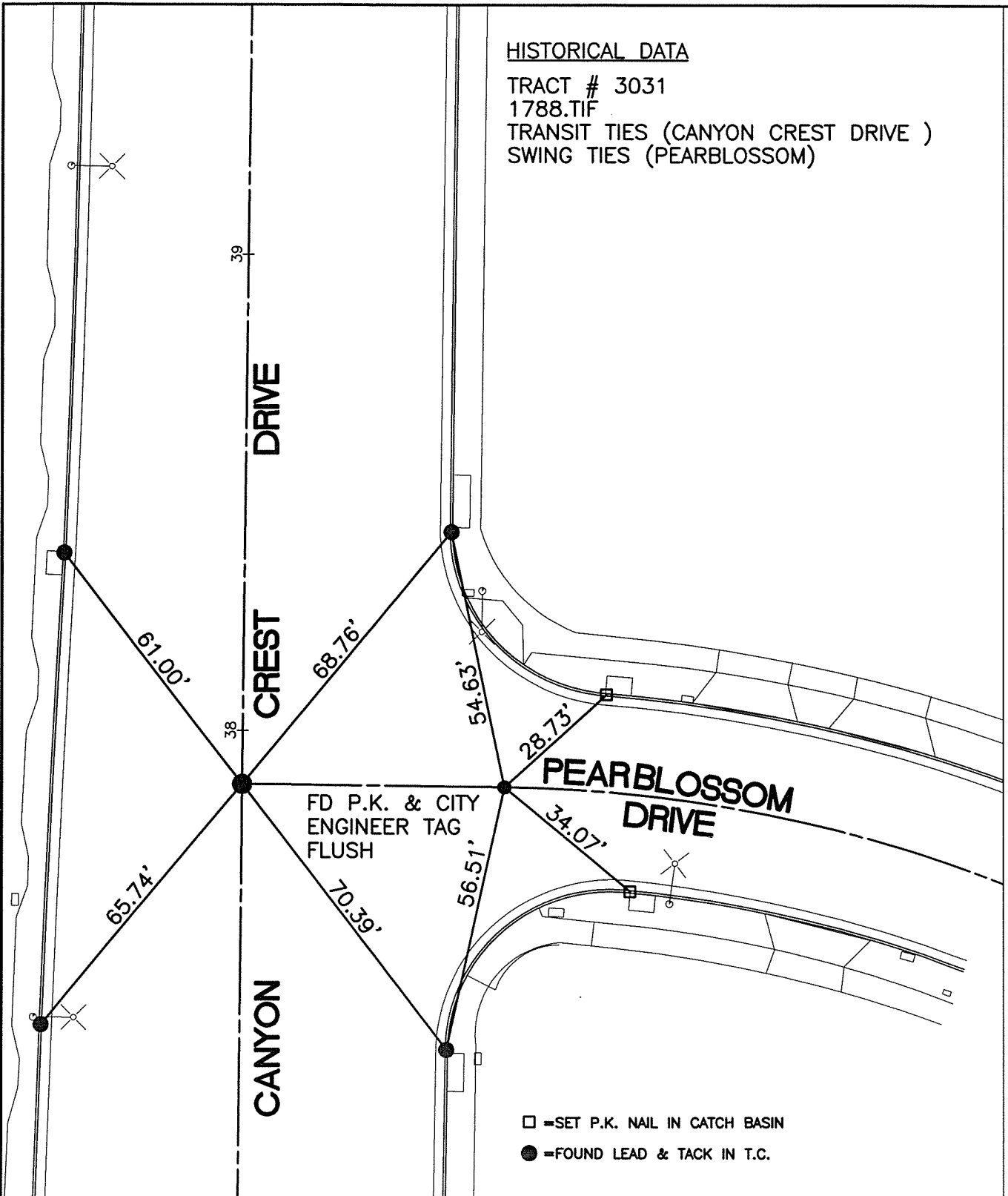


13748.TIF

STREET: CANYON CREST DRIVE X-STREET: PEARLBLOSSOM DRIVE
OFFICIAL USE ONLY

HISTORICAL DATA

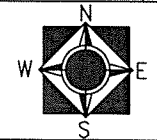
TRACT # 3031
1788.TIF
TRANSIT TIES (CANYON CREST DRIVE)
SWING TIES (PEARBLOSSOM)



SCALE: 1"=30'
 DATE: 05/02/2011
 DRAWN BY: B DURENTE
 F.B.: SEE HISTORICAL DATA
 SEC: 29/30 T.2 S.,R.4 W

OFFICIAL TIE PLAT
 CITY OF RIVERSIDE

THESE TIES ARE FOR THE PURPOSE OF PERPETUATING THE FOUND MONUMENTATION. NO CLAIM IS MADE AS THE RELATIONSHIP OF THE POINTS OR LINES SHOWN HEREON TO TRUE BOUNDARY LOCATIONS



SHEET 1 OF 1