

13751.TIF

STREET: CANYON CREST X-STREET: CREST PARK CIRCLE/MONTE VISTA DRIVE  
OFFICIAL USE ONLY

HISTORICAL DATA  
1786.TIF  
5391.TIF  
TRANSIT TIES  
ADDED 1 EXTRA TIE

CREST PARK CIRCLE  
(PRIVATE STREET)

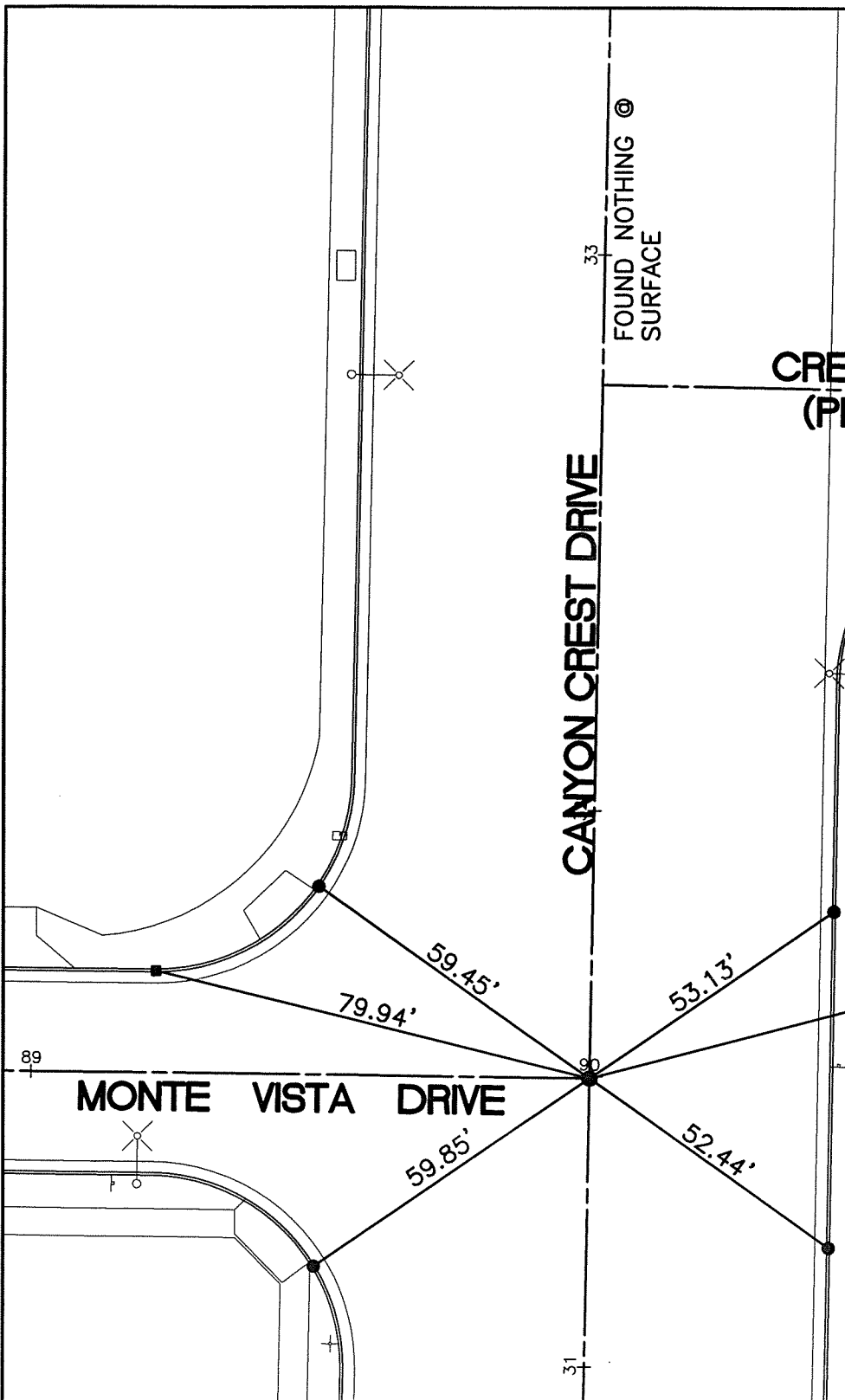
CANYON CREST DRIVE

FOUND NOTHING @  
SURFACE

FOUND P.K. NAIL &  
CITY ENGINEER TAG

■ = SET C\_NAIL &  
CITY TIE TAG

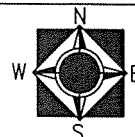
● = FOUND LEAD &  
TACK



SCALE: 1"=30'  
 DATE: 04/26/2011  
 DRAWN BY: B DURENTE  
 F.B.: SEE HISTORICAL DATA  
 SEC: 31/32 T.2 S.,R.4 W

**OFFICIAL TIE PLAT**  
 CITY OF RIVERSIDE

THESE TIES ARE FOR THE PURPOSE OF PERPETUATING THE FOUND MONUMENTATION. NO CLAIM IS MADE AS THE RELATIONSHIP OF THE POINTS OR LINES SHOWN HEREON TO TRUE BOUNDARY LOCATIONS



SHEET 1 OF 1