

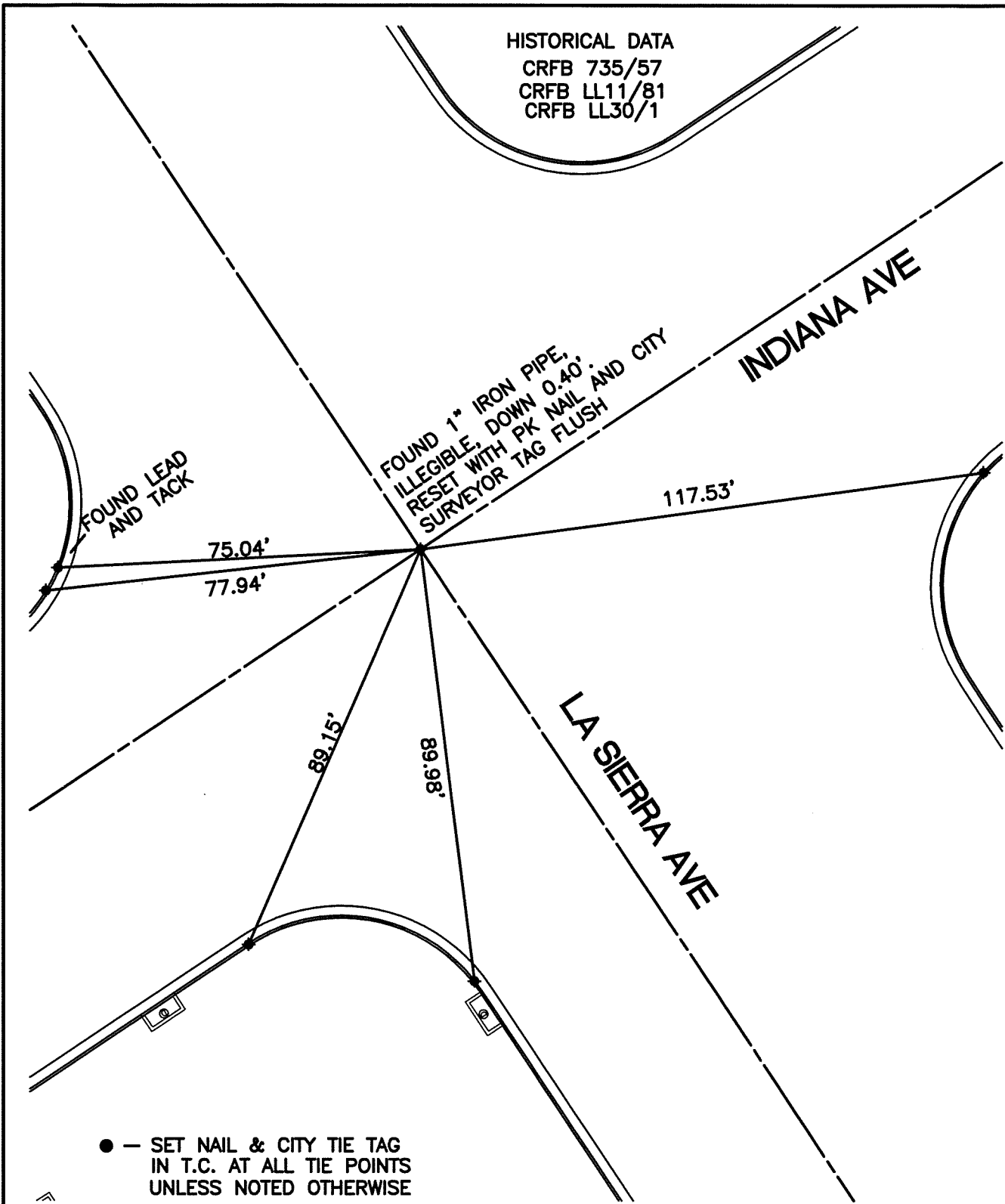
SWING TIES

HISTORICAL DATA
 CRFB 735/57
 CRFB LL11/81
 CRFB LL30/1

13754.TIF

STREET: LA SIERRA AVE

OFFICIAL USE ONLY
 X-STREET: INDIANA AVE



● — SET NAIL & CITY TIE TAG
 IN T.C. AT ALL TIE POINTS
 UNLESS NOTED OTHERWISE

SCALE: 1"=30'

DATE: 07/20/09

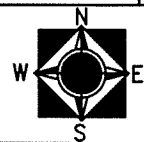
DRAWN BY: CURT

F.B.:

SEC: T. S.,R. W

OFFICIAL TIE PLAT CITY OF RIVERSIDE

THESE TIES ARE FOR THE PURPOSE OF PERPETUATING THE FOUND
 MONUMENTATION. NO CLAIM IS MADE AS THE RELATIONSHIP OF THE
 POINTS OR LINES SHOWN HEREON TO TRUE BOUNDARY LOCATIONS



SHEET 1 OF 1