

SWING TIES

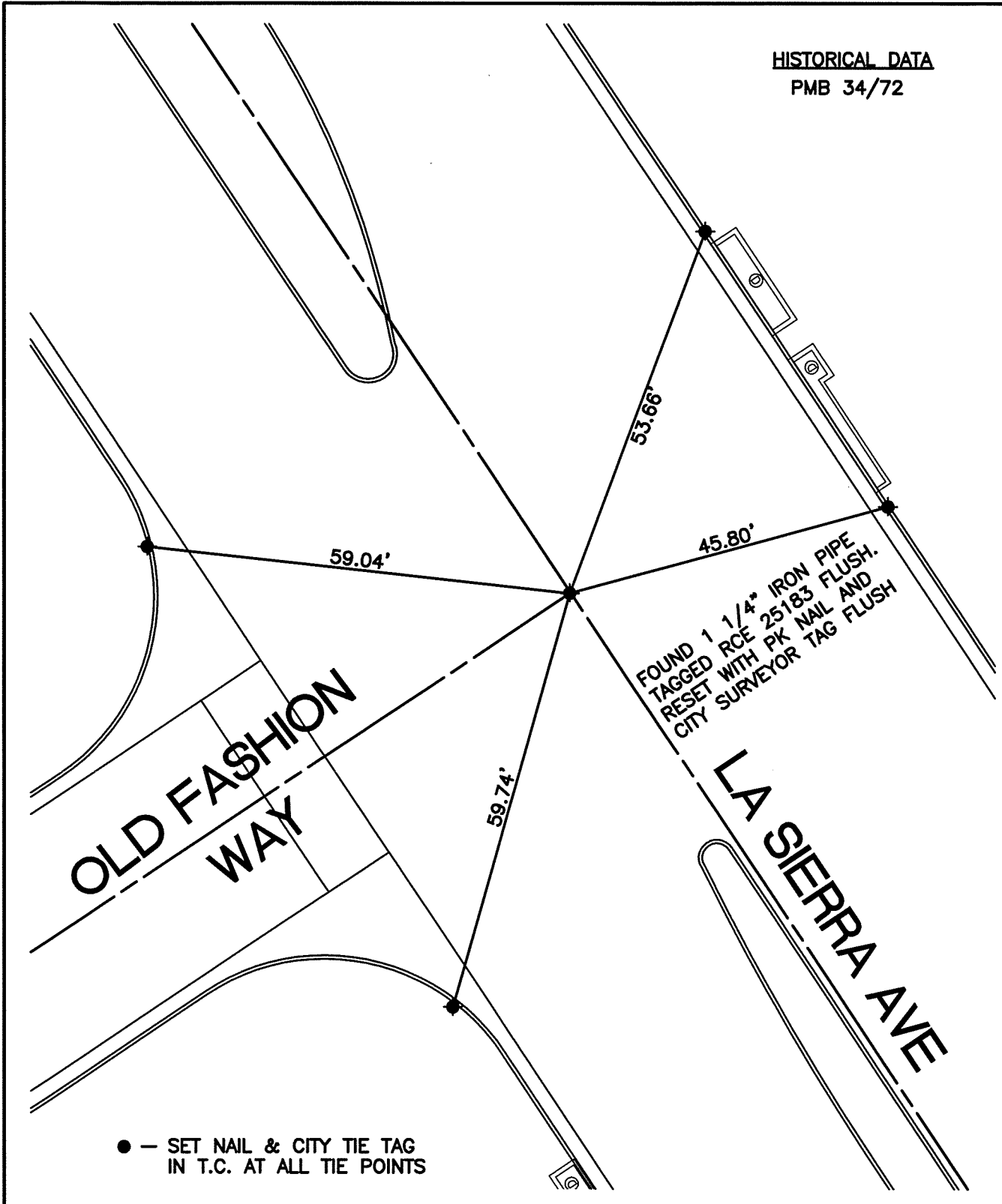
1376LTIJF

STREET: LA SIERRA AVE

OFFICIAL USE ONLY

X-STREET: OLD FASHION WAY


HISTORICAL DATA
PMB 34/72



SCALE: 1"=20'
DATE: 07/20/09
DRAWN BY: CURT
F.B.:
SEC: T. S.,R. W

OFFICIAL TIE PLAT
CITY OF RIVERSIDE

THESE TIES ARE FOR THE PURPOSE OF PERPETUATING THE FOUND MONUMENTATION. NO CLAIM IS MADE AS THE RELATIONSHIP OF THE POINTS OR LINES SHOWN HEREON TO TRUE BOUNDARY LOCATIONS


 SHEET 1 OF 1