

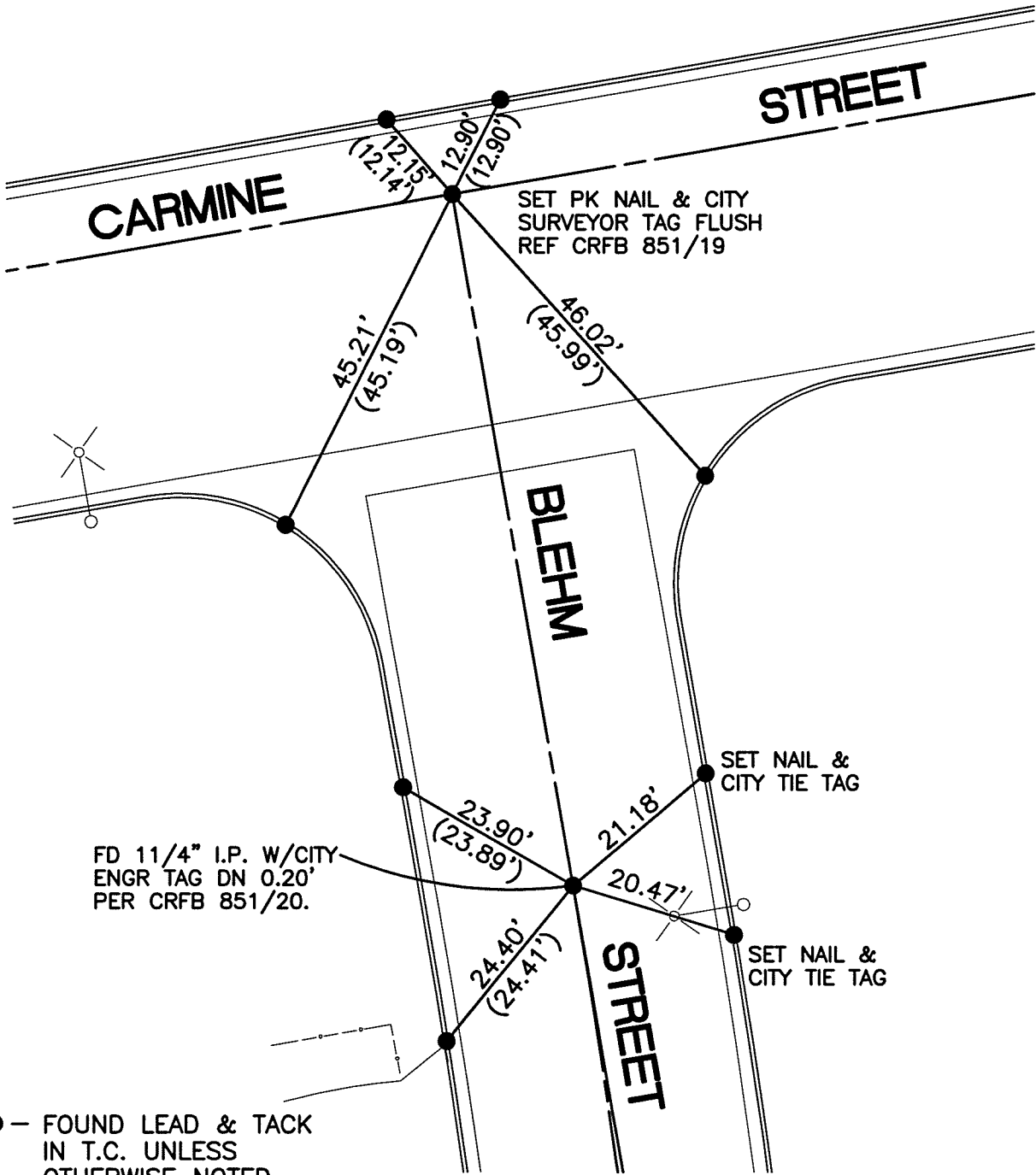
SWING TIES

13773.T1/E

STREET: BLEHM STREET

OFFICIAL USE ONLY

X-STREET: CARMINE ST & B.C. S'LY



● - FOUND LEAD & TACK
IN T.C. UNLESS
OTHERWISE NOTED.

SCALE: 1"=20'

DATE: 3/15/11

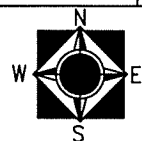
DRAWN BY: CURT

F.B.:

SEC: T. S.,R. W

OFFICIAL TIE PLAT CITY OF RIVERSIDE

THESE TIES ARE FOR THE PURPOSE OF PERPETUATING THE FOUND MONUMENTATION. NO CLAIM IS MADE AS THE RELATIONSHIP OF THE POINTS OR LINES SHOWN HEREON TO TRUE BOUNDARY LOCATIONS



SHEET 1 OF 1