

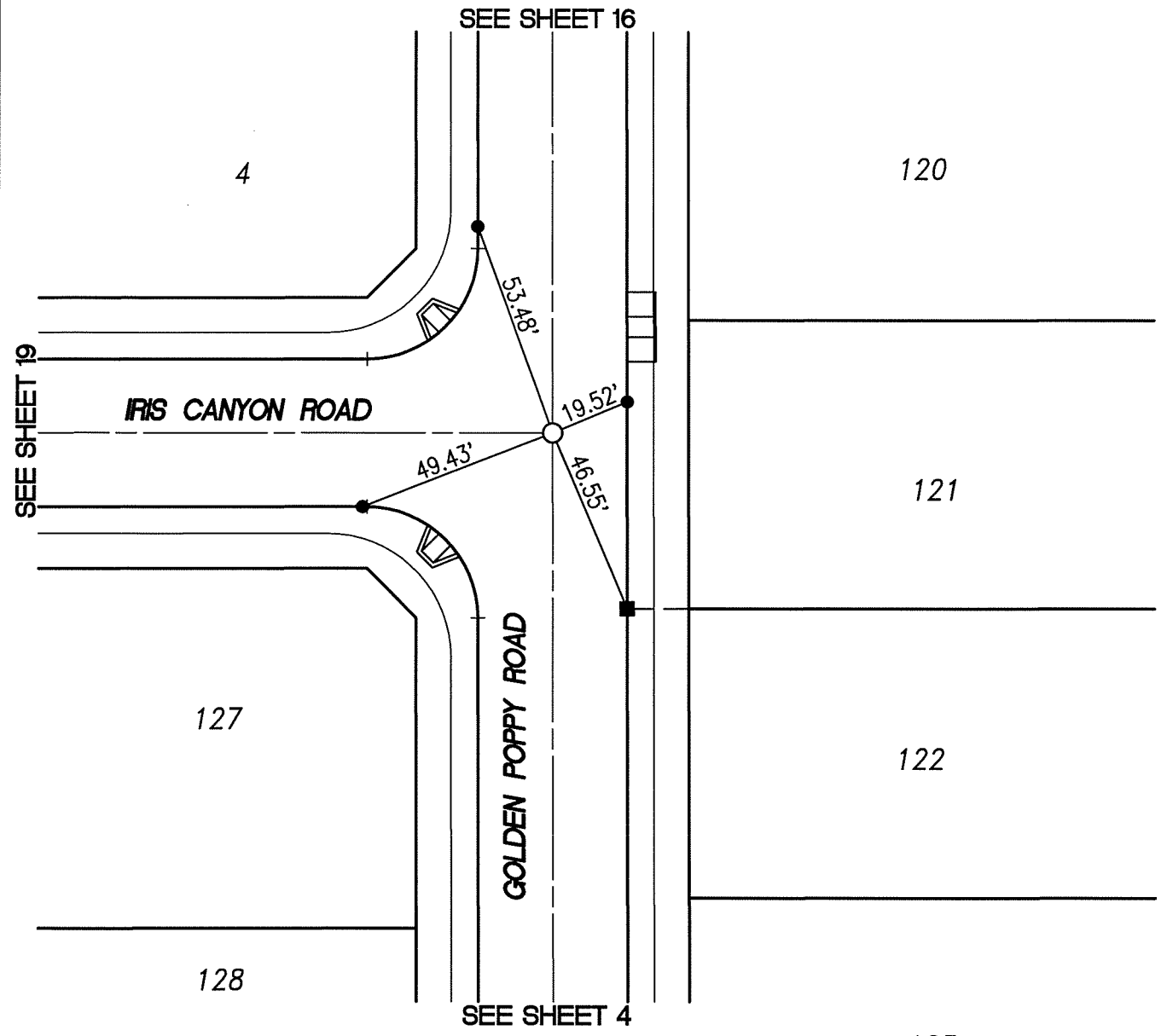
13804.TIF

STREET: GOLDEN POPPY ROAD

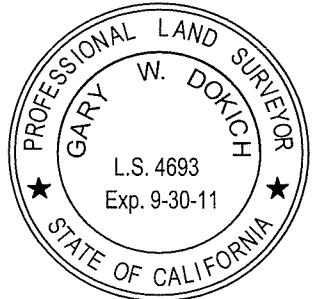
X-STREET: IRIS CANYON ROAD

LEGEND :

- SET SPIKE AND WASHER STAMPED "L.S. 4693"
- SET LEAD & BRASS TACK ON TOP OF CURB
- INDICATES  $\perp$  PROD W/ LEAD, TACK & TAG STAMPED "LS 4693" IN TOP OF CURB




*Gary W. Dokich*  
 GARY W. DOKICH  
 L.S. 4693 EXP. 9-30-11



SCALE: 1"=40'
DATE: 12/21/10
DRAWN BY: TC
MDS CONSULTING
F.B.:

**OFFICIAL TIE PLAT**  
 CITY OF RIVERSIDE  
 TRACT 30717-1

  
 SHEET 18 OF 20  
 FILE NO.: