

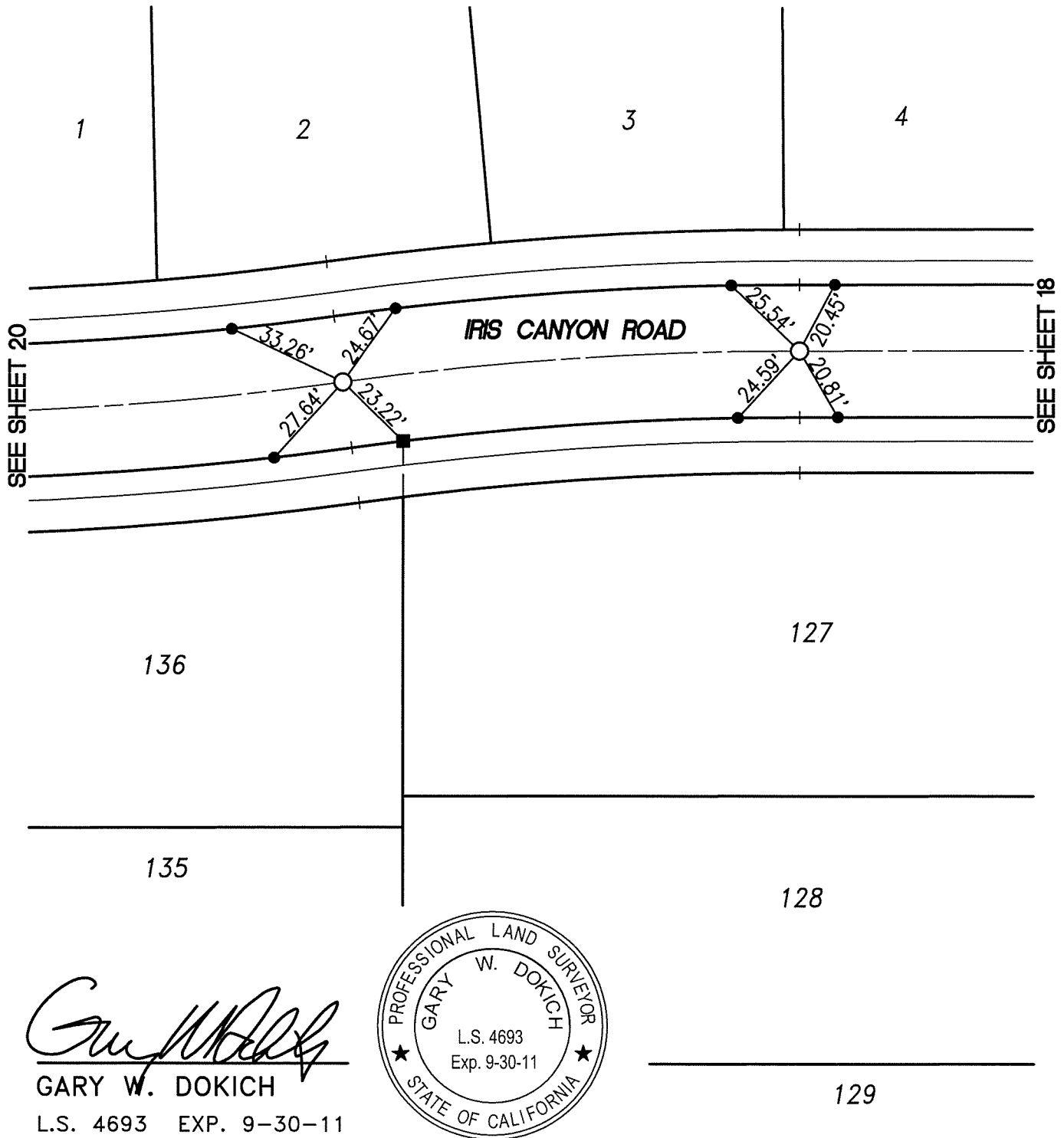
13805.TIF

STREET: IRIS CANYON ROAD

X-STREET: GOLDEN POPPY ROAD

LEGEND :

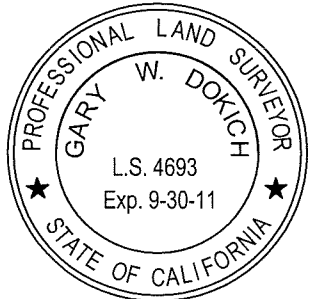
- SET SPIKE AND WASHER STAMPED "L.S. 4693"
- SET LEAD & BRASS TACK ON TOP OF CURB
- INDICATES R PROD W/ LEAD, TACK & TAG STAMPED "LS 4693" IN TOP OF CURB



SEE SHEET 20

SEE SHEET 18

Gary W. Dokich
GARY W. DOKICH
 L.S. 4693 EXP. 9-30-11



SCALE: 1"=40'
DATE: 12/21/10
DRAWN BY: TC
MDS CONSULTING
F.B.:

OFFICIAL TIE PLAT
 CITY OF RIVERSIDE
 TRACT 30717-1

SHEET 19 OF 20
FILE NO.: