

13819.TIF

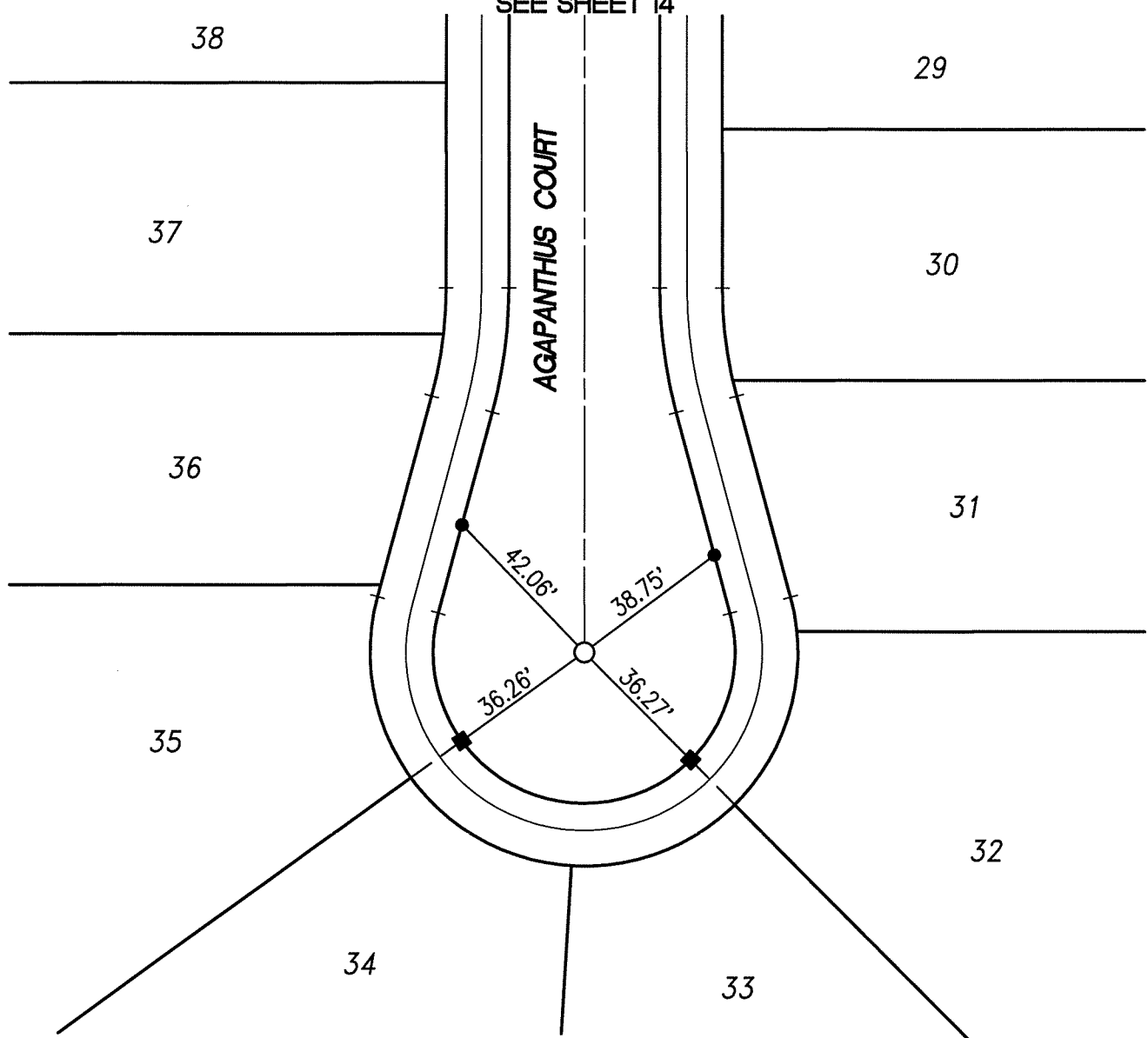
STREET: AGAPANTHUS COURT

X-STREET: IRIS CANYON ROAD

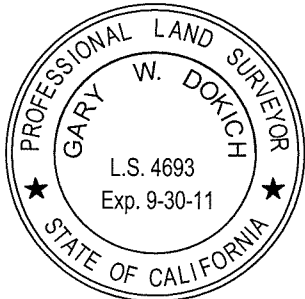
LEGEND :

- SET SPIKE AND WASHER STAMPED "L.S. 4693"
- SET LEAD & BRASS TACK ON TOP OF CURB
- INDICATES \perp PROD W/ LEAD, TACK & TAG STAMPED "LS 4693" IN TOP OF CURB

SEE SHEET 14

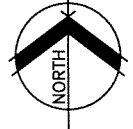


Gary W. Dokich
GARY W. DOKICH
 L.S. 4693 EXP. 9-30-11



SCALE: 1"=40'
DATE: 12/21/10
DRAWN BY: TC
MDS CONSULTING
F.B.:

OFFICIAL TIE PLAT
 CITY OF RIVERSIDE
 TRACT 30717-2


 NORTH

SHEET 15 OF 15
 FILE NO.: