

1382.71F

Street: CLARIDGE

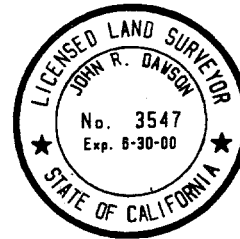
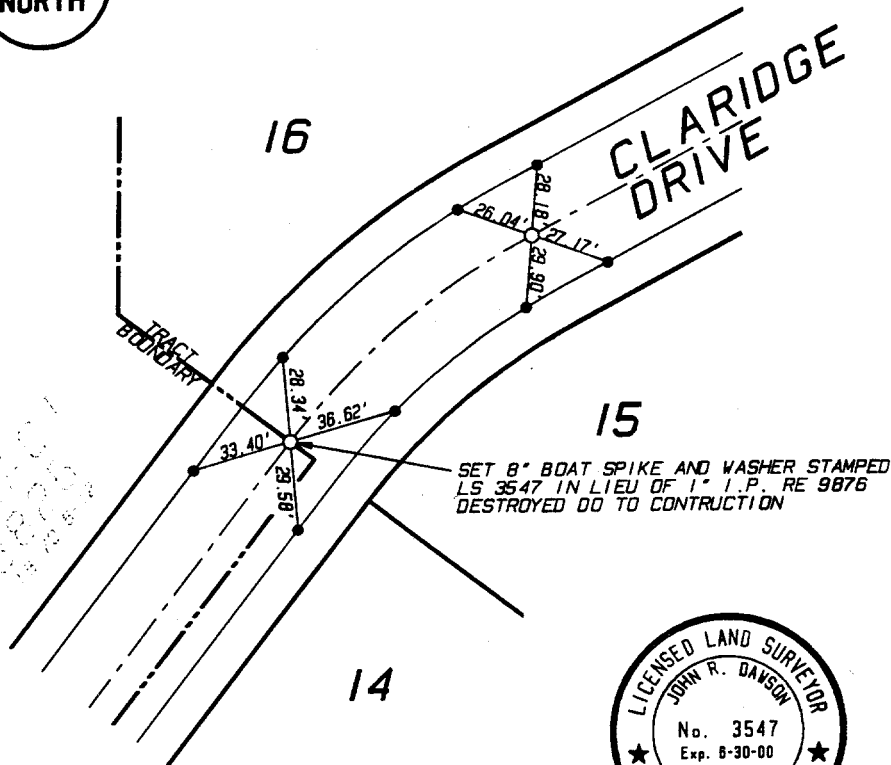
X-Street: B.C. & E.C. T-25486-2
OFFICIAL USE ONLY

TRACT 25486-2

RECORDED IN M.B. 245/59-63

ALL TIES ARE TRANSIT TIES UNLESS OTHERWISE NOTED

- INDICATES SET 8" BOAT SPIKE AND WASHER FLUSH STAMPED L.S. 3547
- INDICATES SET NAIL IN TOP OF CURB
- ⊙ INDICATES SET NAIL AND L.S. TAG IN CURB ON LOT LINE PROJECTED UNLESS OTHERWISE NOTED



STREET CLARIDGE
OFFICE USE ONLY
X-STREET B.C. & E.C. T-25486-2

SCALE: 1" = 50'
 DATE: 8-11-97
 DR. BY: SRD
 W.O.: 128.01

OFFICIAL TIE PLAT CITY OF RIVERSIDE

SHEET 1

PREPARED BY:
 **INTEGRA ENGINEERING, INC.**
 LAND SURVEYORS * CIVIL ENGINEERS
 821 E. CARNEGIE DRIVE, #120, SAN BERNARDINO, CA. 92408
 TELEPHONE (909) 383-0800 FAX (909) 383-0803

OF 4 SHEETS

- ⊗ FD. Ramset Nail on T/C
- FD. "C" Nail on T/C

- FD. LD. & TK. on T/C
- Set LD. & TK. on T/C

Scale:
 Date:
 Drawn by:
 W.O.:
 F.B.:

OFFICIAL TIE PLAT CITY OF RIVERSIDE

These ties are for the purpose of perpetuating the found monumentation. No claim is made as to the relationship of the points or lines shown hereon to true boundary locations.

Sheet 1 of 1
 File No.: