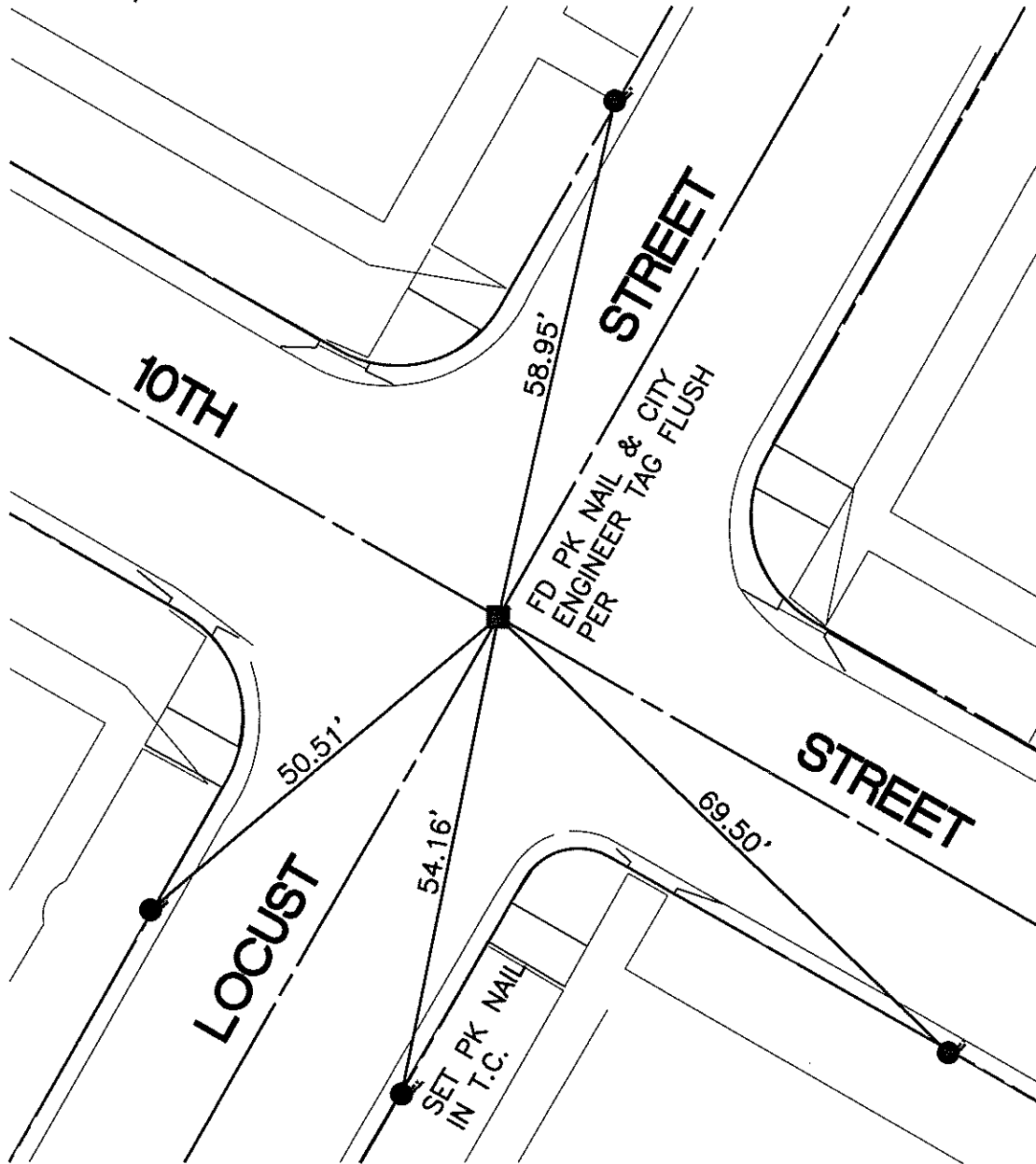


SWING TIES

REF: 4941.TIF
 CRFB 1038/43
 CRFB 224/39



● —INDICATES SET NAIL &
 CITY TIE TAG IN T.C.
 UNLESS OTHERWISE NOTED

13835.TIF

STREET: 10TH STREET

OFFICIAL USE ONLY

X-STREET: LOCUST STREET

SCALE: 1"=20'

DATE: 3/10/11

DRAWN BY: CURT

F.B.:

SEC: 23 T.3S.,R.5W

OFFICIAL TIE PLAT CITY OF RIVERSIDE

THESE TIES ARE FOR THE PURPOSE OF PERPETUATING THE FOUND
 MONUMENTATION. NO CLAIM IS MADE AS THE RELATIONSHIP OF THE
 POINTS OR LINES SHOWN HEREON TO TRUE BOUNDARY LOCATIONS



SHEET 1 OF 1