

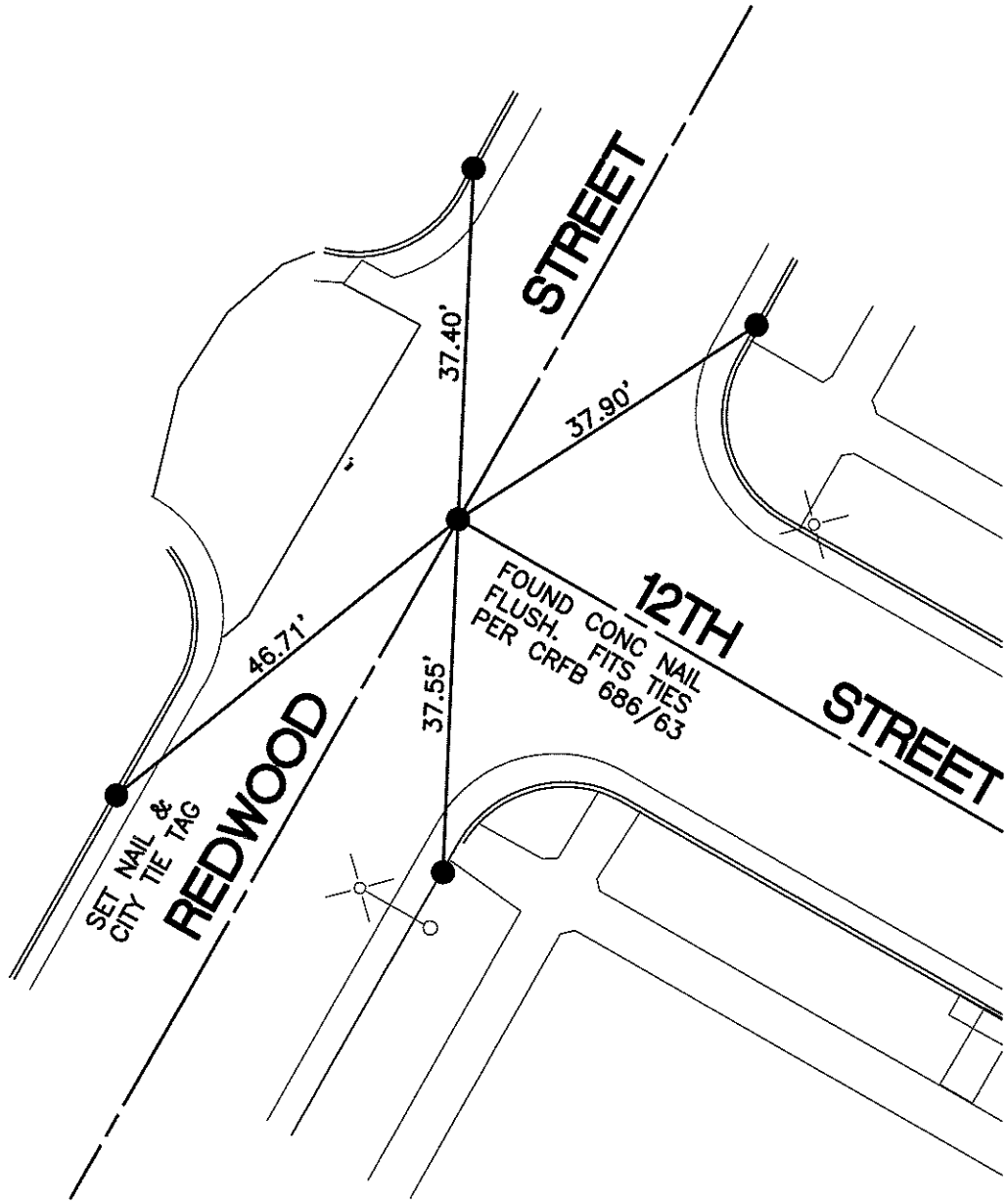
SWING TIES

REF: CRFB 686/63
 CRFB 224/71-76

13838.71E

STREET: 12TH STREET

X-STREET: REDWOOD STREET
 OFFICIAL USE ONLY



● — FOUND LEAD & TACK IN T.C.
 UNLESS OTHERWISE NOTED

SCALE: 1"=20'
 DATE: 3/10/11
 DRAWN BY: CURT
 F.B.:
 SEC: 23 T.2S.,R.5W

OFFICIAL TIE PLAT CITY OF RIVERSIDE

THESE TIES ARE FOR THE PURPOSE OF PERPETUATING THE FOUND MONUMENTATION. NO CLAIM IS MADE AS THE RELATIONSHIP OF THE POINTS OR LINES SHOWN HEREON TO TRUE BOUNDARY LOCATIONS



SHEET 1 OF 1