

**CENTERLINE TIES FOR PARCEL MAP 31387**

HUNSAKER & ASSOCIATES, INC.

RORY S. WILLIAMS, L.S. 6654

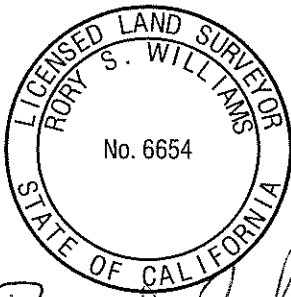
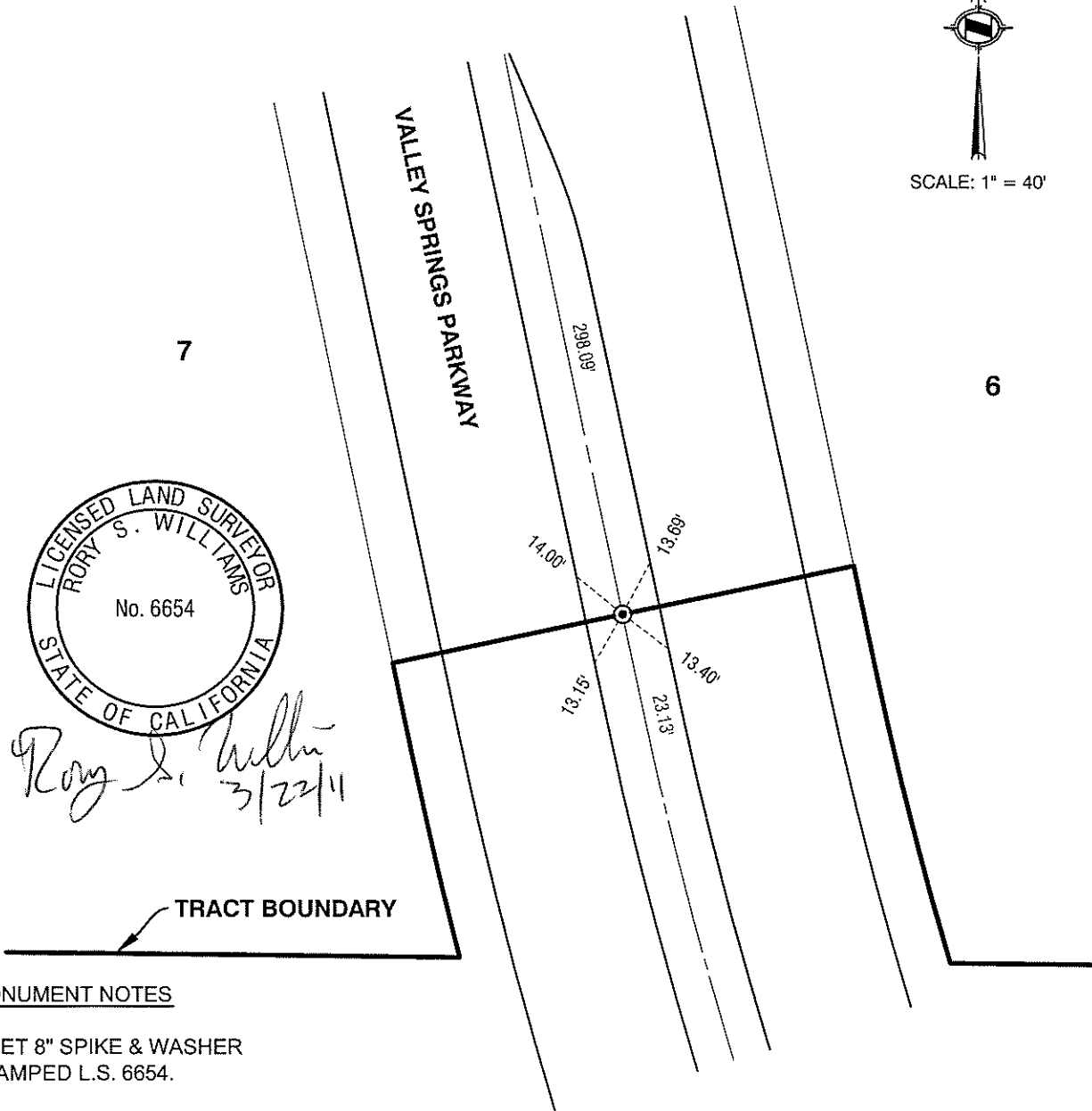
DATE: AUGUST, 2010

13848.TIF

STREET: VALLEY SPRINGS PARKWAY  
OFFICIAL USE ONLY



SCALE: 1" = 40'



*Rory S. Williams*  
3/22/11

TRACT BOUNDARY

MONUMENT NOTES

● SET 8" SPIKE & WASHER  
STAMPED L.S. 6654.

⊙ SET 1" I.P. & TAG STAMPED  
L.S. 6654.

ALL TIE POINTS ARE LEAD,  
TACK & TAG STAMPED L.S.  
6654 SET IN TOP OF CURB.

SCALE:

DATE:

DRAWN BY:

F.B.:

SEC: T. S., R. W

**OFFICIAL TIE PLAT**  
CITY OF RIVERSIDE

THESE TIES ARE FOR THE PURPOSE OF PERPETUATING THE FOUND  
MONUMENTATION. NO CLAIM IS MADE AS THE RELATIONSHIP OF THE  
POINTS OR LINES SHOWN HEREON TO TRUE BOUNDARY LOCATIONS

SHEET 1 OF 1