

CENTERLINE TIES FOR PARCEL MAP 31387
 HUNSAKER & ASSOCIATES, INC.
 RORY S. WILLIAMS, L.S. 6654
 DATE: AUGUST, 2010



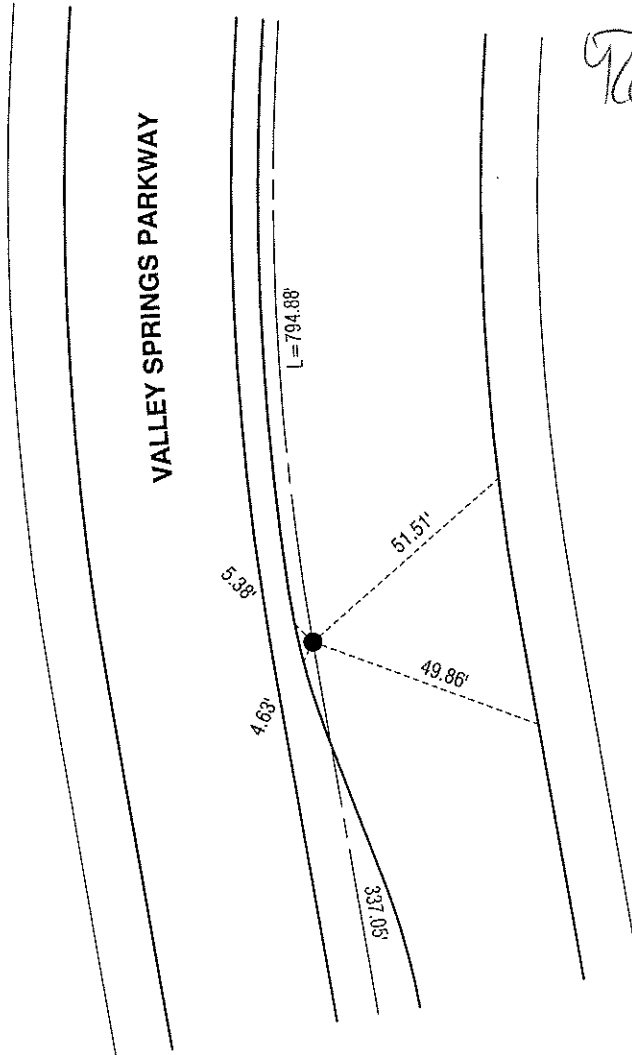
Rory S. Williams
 3/22/11



SCALE: 1" = 40'

2

VALLEY SPRINGS PARKWAY



6

13850.TIF
 STREET: VALLEY SPRINGS PARKWAY
 OFFICIAL USE ONLY

MONUMENT NOTES

- SET 8" SPIKE & WASHER STAMPED L.S. 6654.
- ⊙ SET 1" I.P. & TAG STAMPED L.S. 6654.

ALL TIE POINTS ARE LEAD, TACK & TAG STAMPED L.S. 6654 SET IN TOP OF CURB.

SCALE:
DATE:
DRAWN BY:
F.B.:
SEC: T. S., R. W

OFFICIAL TIE PLAT
 CITY OF RIVERSIDE

THESE TIES ARE FOR THE PURPOSE OF PERPETUATING THE FOUND MONUMENTATION. NO CLAIM IS MADE AS THE RELATIONSHIP OF THE POINTS OR LINES SHOWN HEREON TO TRUE BOUNDARY LOCATIONS

SHEET 1 OF 1