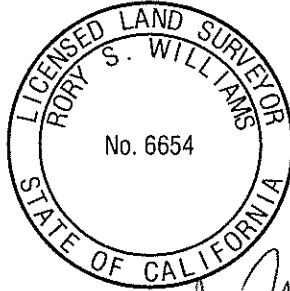
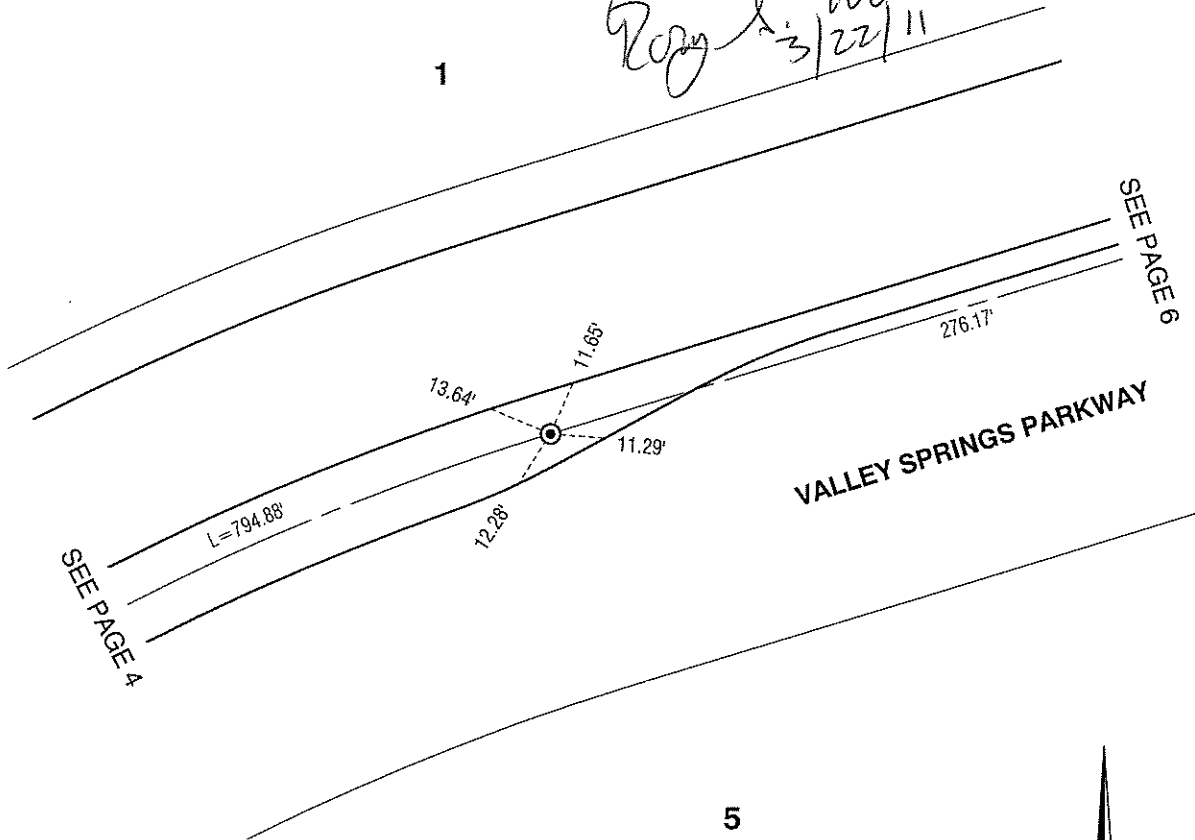


CENTERLINE TIES FOR PARCEL MAP 31387
 HUNSAKER & ASSOCIATES, INC.
 RORY S. WILLIAMS, L.S. 6654
 DATE: AUGUST, 2010



Rory S. Williams
 8/22/11



MONUMENT NOTES

- SET 8" SPIKE & WASHER
STAMPED L.S. 6654.
- ⊙ SET 1" I.P. & TAG STAMPED
L.S. 6654.

ALL TIE POINTS ARE LEAD,
TACK & TAG STAMPED L.S.
6654 SET IN TOP OF CURB.



SCALE: 1" = 40'

STREET: VALLEY SPRINGS PARKWAY
 OFFICIAL USE ONLY

1385171E

SCALE:
DATE:
DRAWN BY:
F.B.:
SEC: T. S., R. W

OFFICIAL TIE PLAT
 CITY OF RIVERSIDE

THESE TIES ARE FOR THE PURPOSE OF PERPETUATING THE FOUND
 MONUMENTATION. NO CLAIM IS MADE AS THE RELATIONSHIP OF THE
 POINTS OR LINES SHOWN HEREON TO TRUE BOUNDARY LOCATIONS

SHEET 1 OF 1