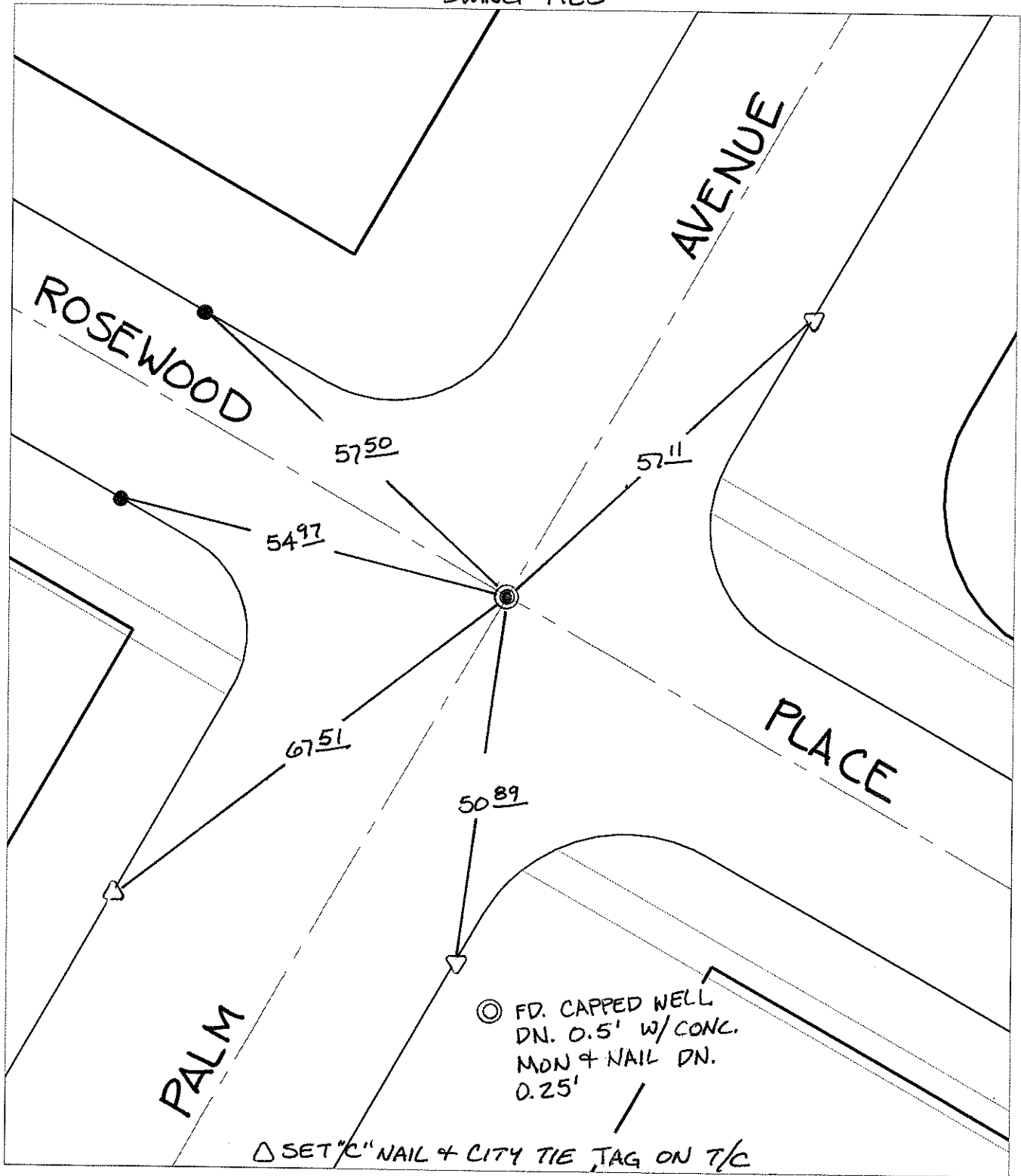


13855.TIF

Street: PALM AVENUE  
X-Street: ROSEWOOD PLACE  
OFFICIAL USE ONLY

SWING TIES



⊙ FD. CAPPED WELL  
DN. 0.5' W/ CONC.  
MON & NAIL DN.  
0.25'

△ SET "C" NAIL & CITY TIE TAG ON T/C

- ✕ FD. Ramset Nail on T/C
  - FD. LD. & TK. on T/C
  - FD. "C" Nail on T/C
  - Set LD. & TK. on T/C
- P.K. and City Engineer tag to be set @ surface after street construction is complete. (If possible)

Scale: 1" = 20'  
 Date: 04/06/09  
 Drawn by: pw  
 F.B.:  
 TR-Sec: T2SR5W-27

## OFFICIAL TIE PLAT

### CITY OF RIVERSIDE



*These ties are for the purpose of perpetuating the found monumentation. No claim is made as to the relationship of the points or lines shown hereon to true boundary locations.*

Sheet 1 of 1  
Cadme MB: 38-6