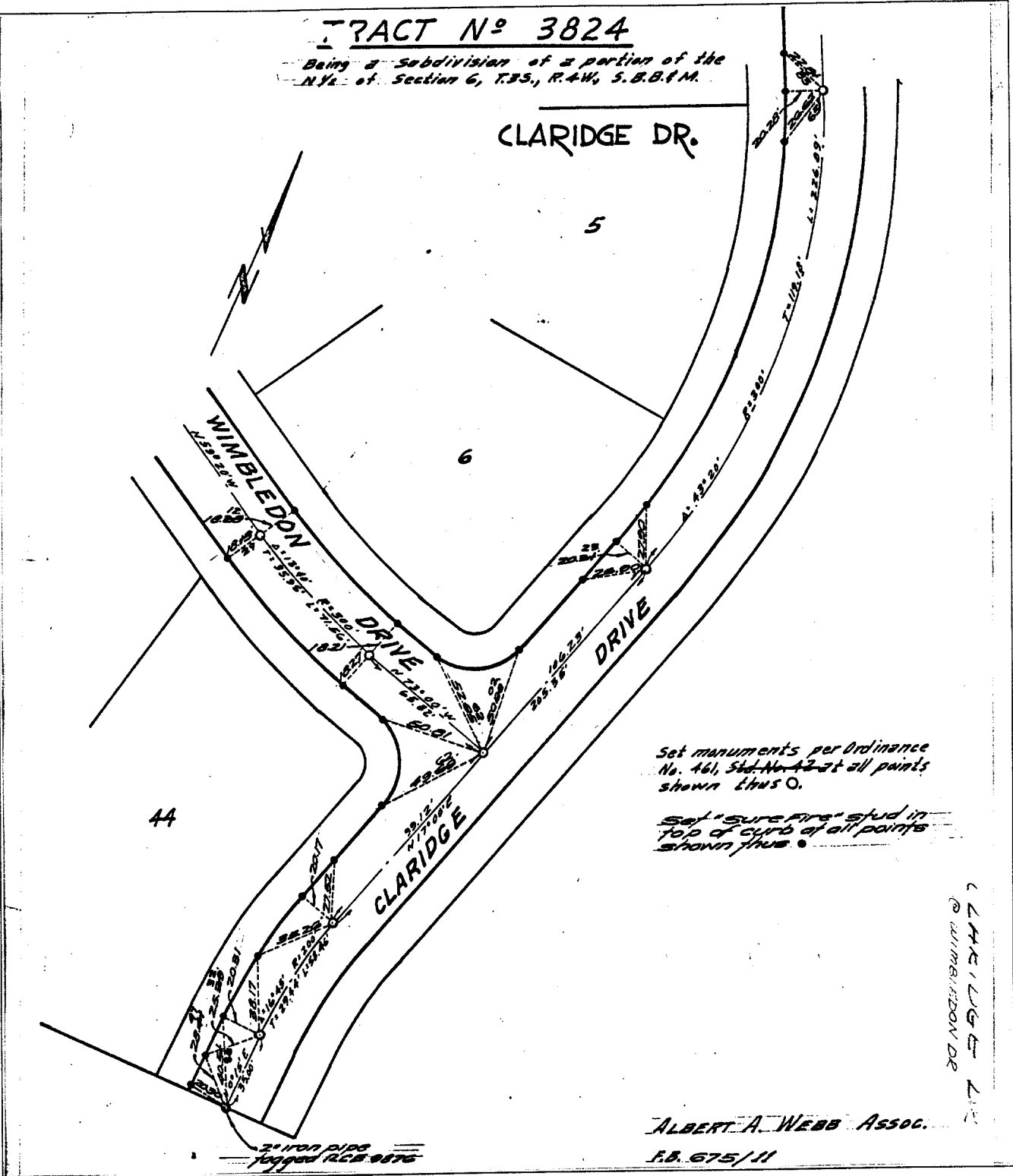


1397.TIF

**TRACT N° 3824**

Being a Subdivision of a portion of the N.Y. of Section 6, T.35, R.4W, S.B.B.M.



Set monuments per Ordinance No. 461, Std. No. 42 at all points shown thus O.

Set "sure fire" stud in top of curb at all points shown thus •

CLARIDGE DR  
WIMBLETON DR

ALBERT A. WEBB ASSOC.  
F.B. 675/11

- ✕ FD. Ramset Nail on T/C
- FD. "C" Nail on T/C

- FD. LD. & TK. on T/C
- Set LD. & TK. on T/C

Street: **CLARIDGE DR.**

X-Street: **WIMBLETON DR.**

OFFICIAL USE ONLY

Scale:  
Date:  
Drawn by:  
W.O.: 64-270  
F.B.: 675/11

**OFFICIAL TIE PLAT**  
**CITY OF RIVERSIDE**

These ties are for the purpose of perpetuating the found monumentation. No claim is made as to the relationship of the points or lines shown hereon to true boundary locations.

Sheet 4 of 4  
File No.: