

SWING TIES

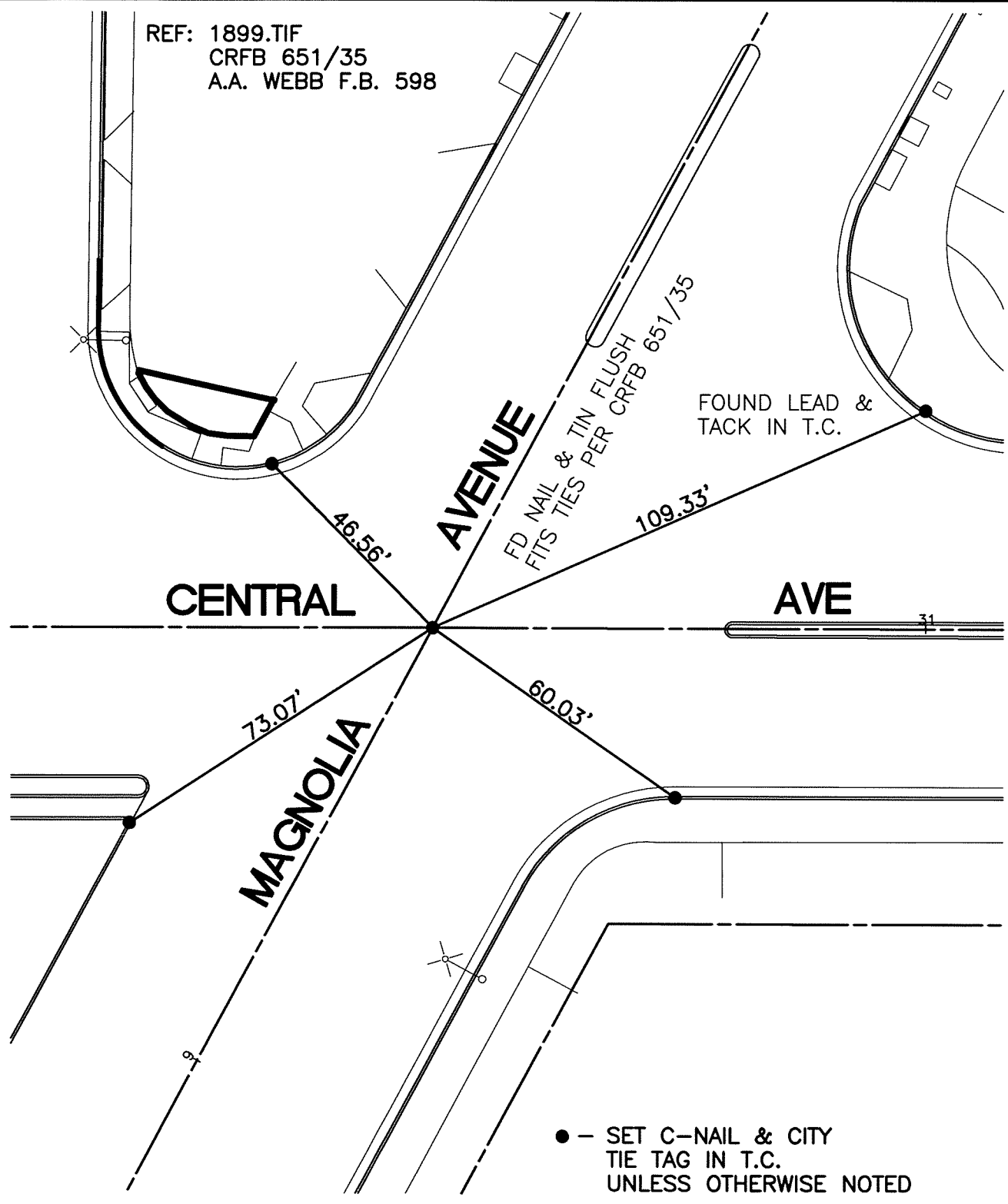
13881.TIF

STREET: MAGNOLIA AVENUE

OFFICIAL USE ONLY

X-STREET: CENTRAL AVENUE

REF: 1899.TIF
CRFB 651/35
A.A. WEBB F.B. 598



SCALE: 1"=30'

DATE: 5/18/11

DRAWN BY: CURT

F.B.:

SEC: 34 T.2S., R.5W

OFFICIAL TIE PLAT CITY OF RIVERSIDE

THESE TIES ARE FOR THE PURPOSE OF PERPETUATING THE FOUND MONUMENTATION. NO CLAIM IS MADE AS THE RELATIONSHIP OF THE POINTS OR LINES SHOWN HEREON TO TRUE BOUNDARY LOCATIONS



SHEET 1 OF 1