

SWING TIES

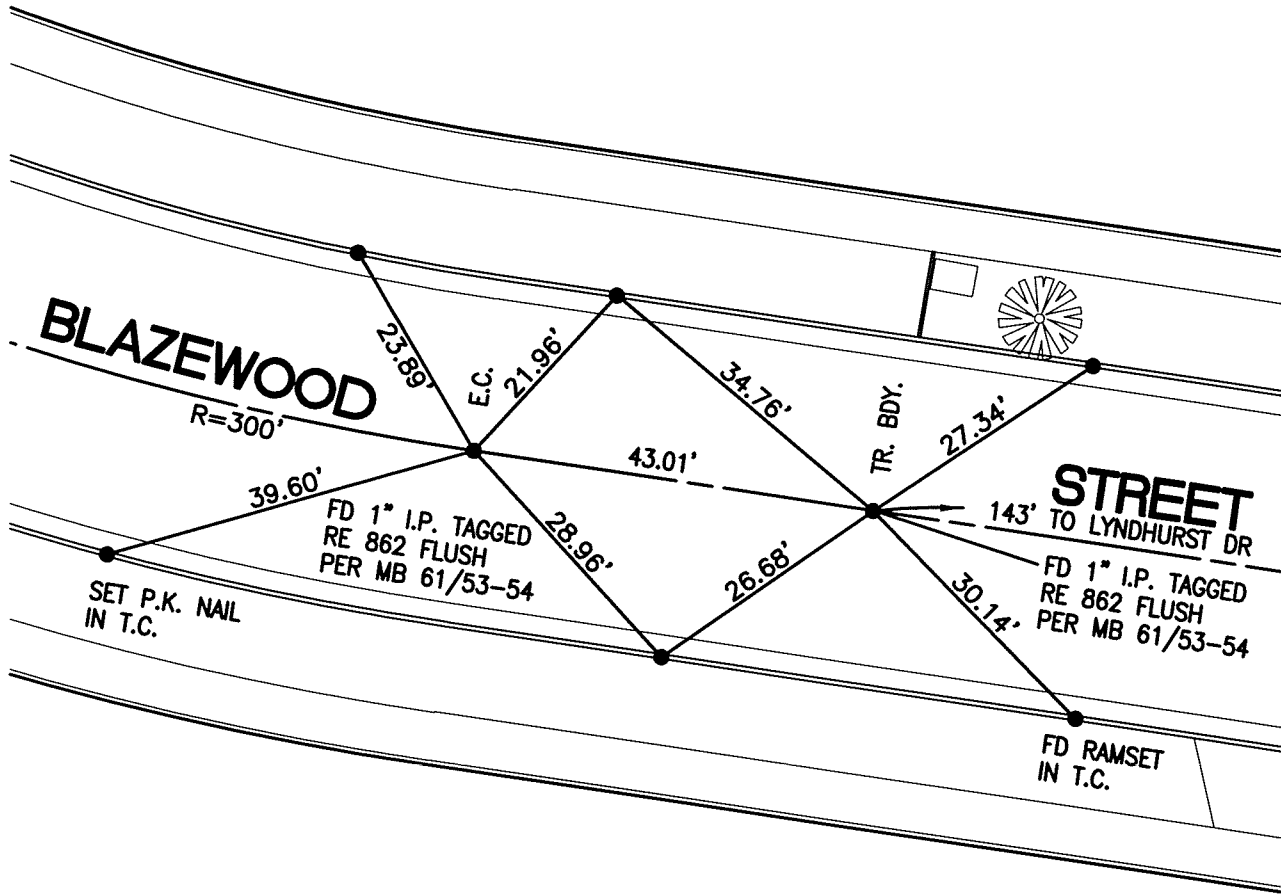
REF: JFD TIES FB 1014/36

13882.TIF

STREET: BLAZEWOOD STREET

OFFICIAL USE ONLY

X-STREET: W'LY OF LYN DHURST DR



● - SET C-NAIL & CITY TIE TAG IN T.C. UNLESS OTHERWISE NOTED

SCALE: 1"=20'

DATE: 4/16/11

DRAWN BY: CURT

F.B.:

SEC: 1, T.2S., R.4W

OFFICIAL TIE PLAT CITY OF RIVERSIDE

THESE TIES ARE FOR THE PURPOSE OF PERPETUATING THE FOUND MONUMENTATION. NO CLAIM IS MADE AS THE RELATIONSHIP OF THE POINTS OR LINES SHOWN HEREON TO TRUE BOUNDARY LOCATIONS



SHEET 1 OF 1