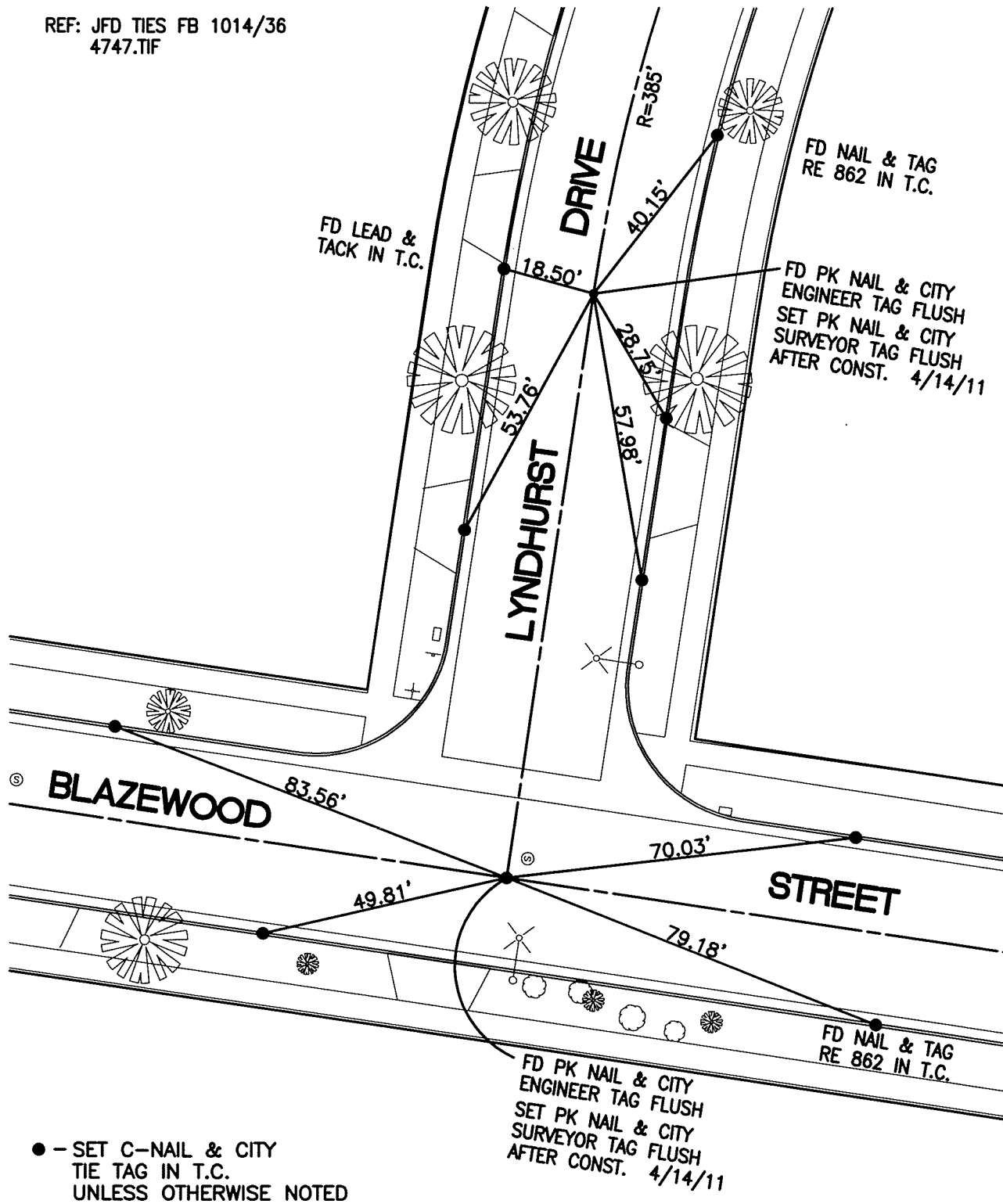


SWING TIES

REF: JFD TIES FB 1014/36
4747.TIF



STREET: LYNDHURST DRIVE

OFFICIAL USE ONLY

X-STREET: BLAZEWOOD STREET

13883.TIF

SCALE: 1"=30'

DATE: 4/16/11

DRAWN BY: CURT

F.B.:

SEC: 1, T2.S., R.4 W

OFFICIAL TIE PLAT CITY OF RIVERSIDE

THESE TIES ARE FOR THE PURPOSE OF PERPETUATING THE FOUND MONUMENTATION. NO CLAIM IS MADE AS THE RELATIONSHIP OF THE POINTS OR LINES SHOWN HEREON TO TRUE BOUNDARY LOCATIONS



SHEET 1 OF 1