

13895.TIF

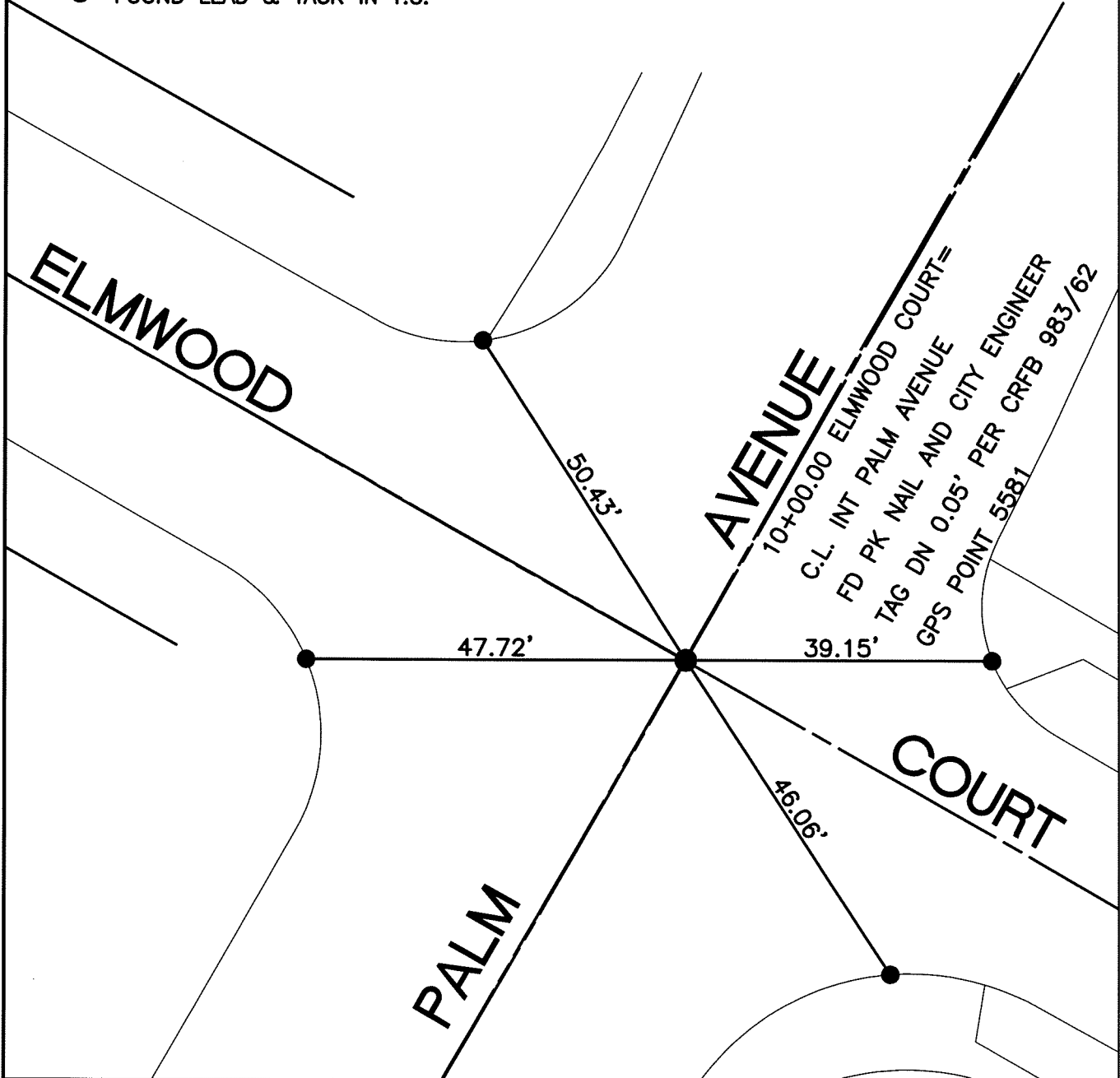
STREET: PALM AVENUE

OFFICIAL USE ONLY
X-STREET: ELMWOOD COURT

HISTORICAL DATA

CRFB 983/62
GPS POINT 5581
3006.TIF
TRANSIT TIES
DRAWN PER 3006.TIF


● = FOUND LEAD & TACK IN T.C.



SCALE: 1"=20'
DATE: 02/09/2009
DRAWN BY: B DURENTE
F.B.:SEE HISTORICAL DATA
SEC:27 T.2 S.,R.5 W

OFFICIAL TIE PLAT
CITY OF RIVERSIDE

THESE TIES ARE FOR THE PURPOSE OF PERPETUATING THE FOUND MONUMENTATION. NO CLAIM IS MADE AS THE RELATIONSHIP OF THE POINTS OR LINES SHOWN HEREON TO TRUE BOUNDARY LOCATIONS


 SHEET 1 OF 1