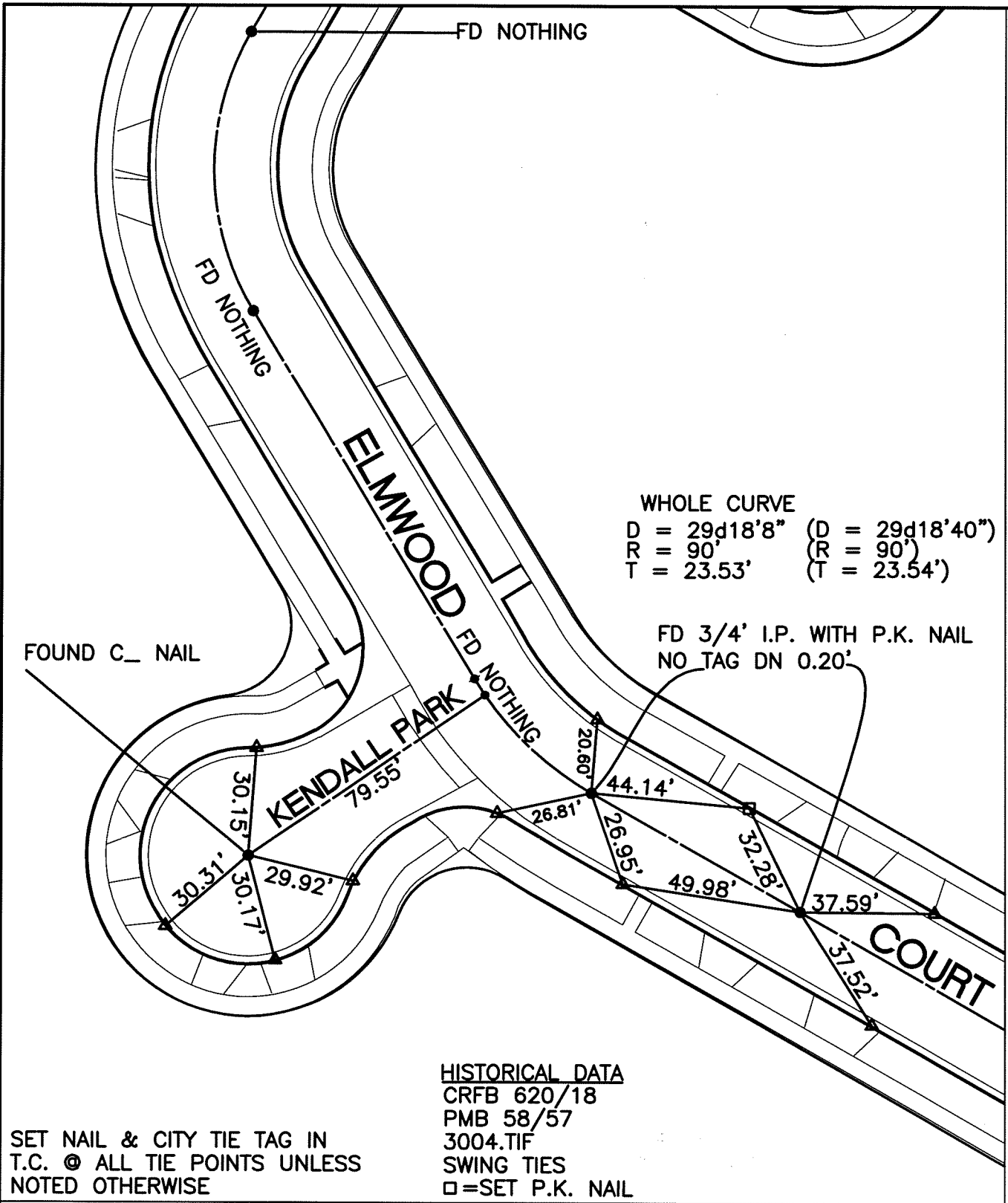


13898.TIF

STREET: ELMWOOD COURT

OFFICIAL USE ONLY

X-STREET: KENDALL PARK



WHOLE CURVE
 D = 29d18'8" (D = 29d18'40")
 R = 90' (R = 90')
 T = 23.53' (T = 23.54')

FD 3/4' I.P. WITH P.K. NAIL
 NO TAG DN 0.20'

HISTORICAL DATA
 CRFB 620/18
 PMB 58/57
 3004.TIF
 SWING TIES
 □ = SET P.K. NAIL

SET NAIL & CITY TIE TAG IN
 T.C. © ALL TIE POINTS UNLESS
 NOTED OTHERWISE

SCALE: 1"=40'
DATE: 02/09/2009
DRAWN BY: BDURENTE
F.B.: SEE HISTORICAL DATA
SEC: 27 T.2 S., R.5 W

OFFICIAL TIE PLAT
 CITY OF RIVERSIDE

THESE TIES ARE FOR THE PURPOSE OF PERPETUATING THE FOUND MONUMENTATION. NO CLAIM IS MADE AS THE RELATIONSHIP OF THE POINTS OR LINES SHOWN HEREON TO TRUE BOUNDARY LOCATIONS

SHEET 1 OF 1