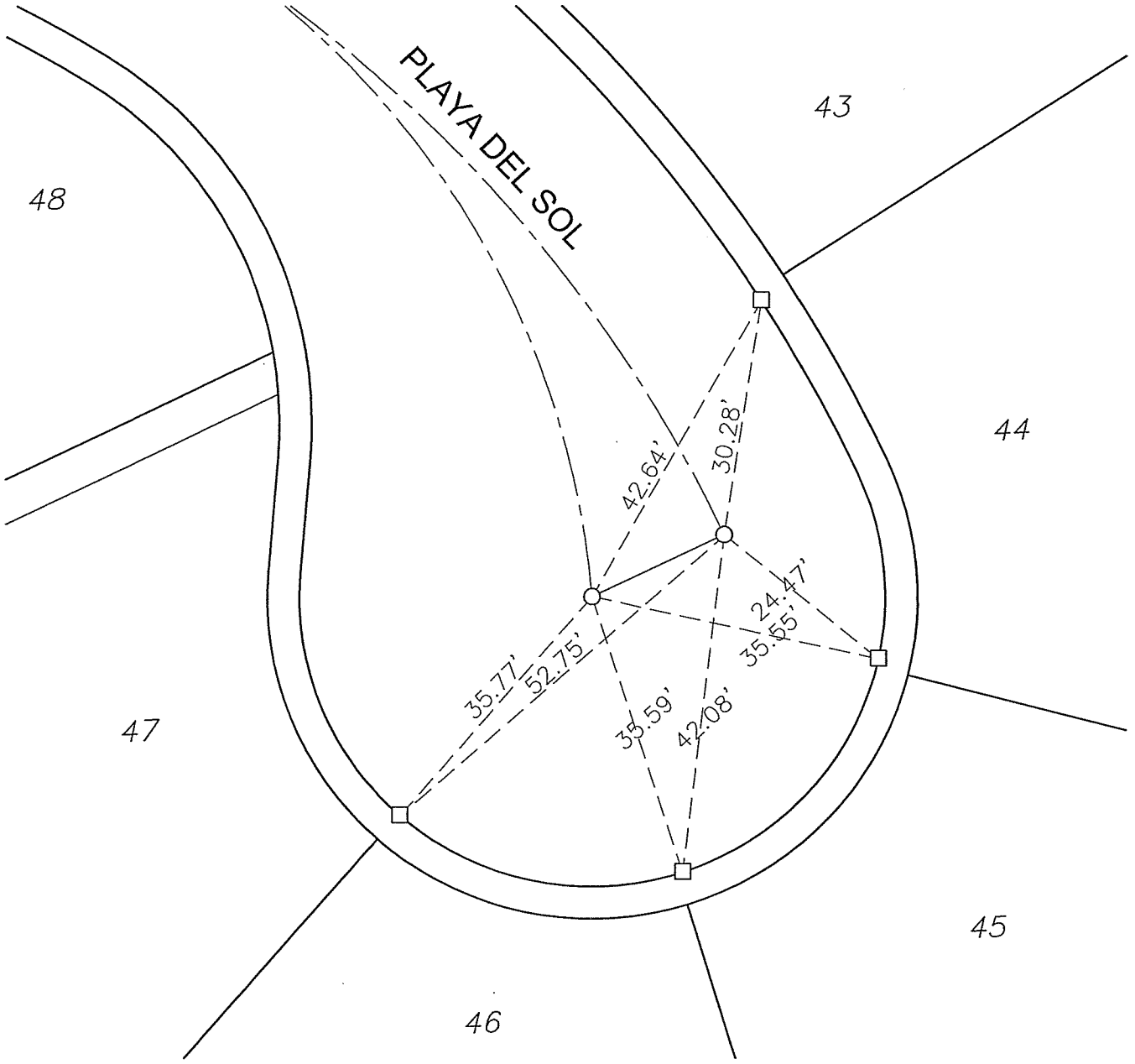


TR 32772-1

MB 416/51-56

SEE SHEET 18

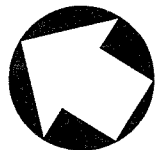


X-STREET CUL-DE-SAC
OFFICE USE ONLY

STREET PLAYA DEL SOL

SURVEYORS' NOTE

- ▲ - INDICATES SET NAIL IN TC
- - INDICATES SET NAIL AND "LS 5022" TAG FLUSH
- - INDICATES SET 1/2" SPIKE AND "LS 5022" TAG, FLUSH



SCALE: 1" = 20
DATE: 06-09-11
DR. BY: AAP
4RIV250100

--- **OFFICIAL TIE PLAT** ---
CITY OF RIVERSIDE
PREPARED BY: **PSOMAS**
2010 Iowa Avenue #101 Riverside, California 92507
(951) 787-8421 www.psomas.com

SHEET
19
OF 27 SHEETS